



*jordan fishwick*

12 Brereton Road, SK9 3AN  
Guide Price £649,950

# Brereton Road Handforth SK9 3AN

Guide Price £649,950




This handsome four bedroom detached home offers a wealth of well proportioned accommodation which is sure to appeal!. The property is located on a desirable road and is within a short stroll of the train station, local shops and amenities. The accommodation comprises in brief: Entrance porch , bay fronted reception room, living room, kitchen diner with access to the garage, utility room and downstairs shower room. The first floor comprises: four bedrooms with one benefitting from an en-suite shower room and a family bathroom. Externally the property boasts a private rear garden which is mainly laid to lawn with patio area which is ideal for entertaining. To the front is a paved driveway with parking for multiple vehicles. Viewings essential to fully appreciate.



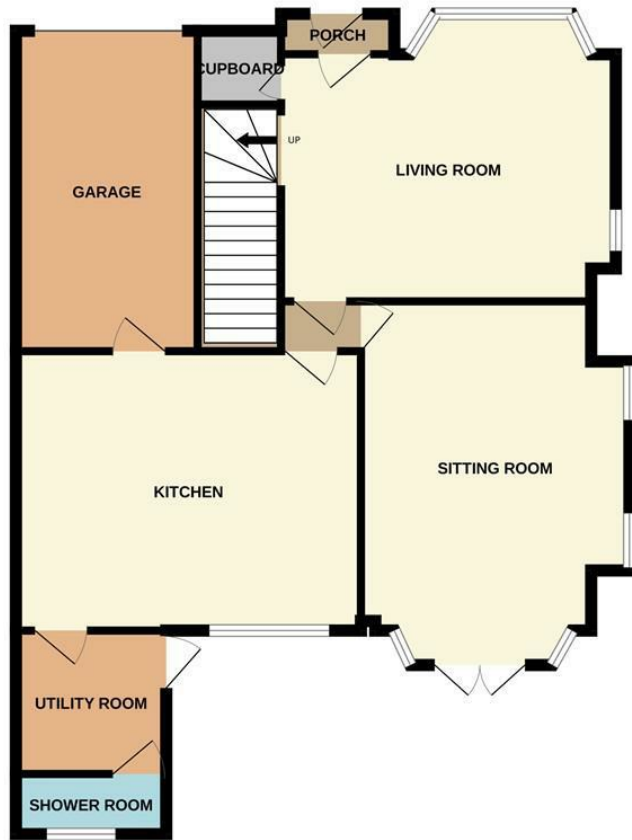
- Detached
- Four bedrooms
- Cul-de-sac position
- One of Handforth's finest roads
- Short stroll to Handforth train station
- Easy access to Handforth village
- Off road parking
- Garage



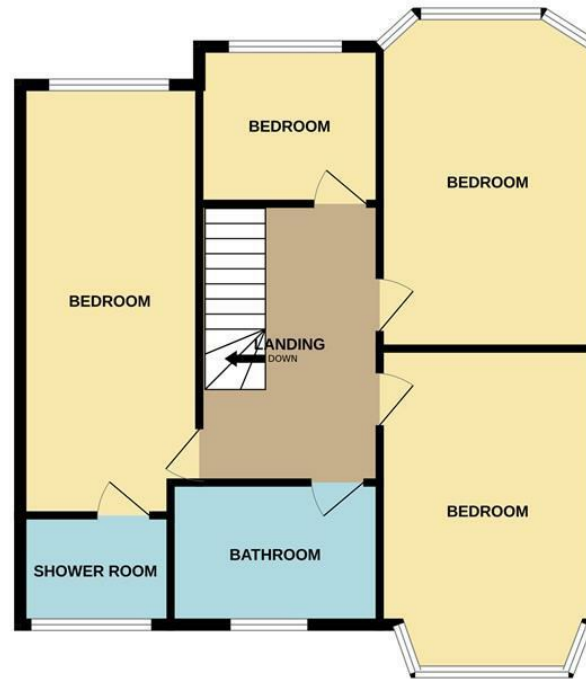
Energy Efficiency Rating		
	Current	Potential
Very energy efficient - lower running costs		
(92 plus) <b>A</b>		
(81-91) <b>B</b>		<b>85</b>
(69-80) <b>C</b>	<b>74</b>	
(55-68) <b>D</b>		
(39-54) <b>E</b>		
(21-38) <b>F</b>		
(1-20) <b>G</b>		
Not energy efficient - higher running costs		
<b>England &amp; Wales</b>	EU Directive 2002/91/EC 	



GROUND FLOOR



1ST FLOOR



Measurements are approximate. Not to scale. Illustrative purposes only  
Made with Metropix ©2024



These particulars are believed to be accurate but they are not guaranteed and do not form a contract. Neither Jordan Fishwick nor the vendor or lessor accept any responsibility in respect of these particulars, which are not intended to be statements or representations of fact and any intending purchaser or lessee must satisfy himself by inspection or otherwise as to the correctness of each of the statements contained in these particulars. Any floorplans on this brochure are for illustrative purposes only and are not necessarily to scale.

Offices at: Chorlton, Didsbury, Disley, Hale, Glossop, Macclesfield, Manchester Deansgate, Manchester Whitworth Street, New Mills, Sale, Wilmslow and Withington

36-38 Alderley Road, Wilmslow, Cheshire, SK9 1JX  
**01625 532000**

wilmslow@jordanfishwick.co.uk  
www.jordanfishwick.co.uk