



Jordan fishwick

Windy Knowle Birch Vale High Peak

Windy Knowle Birch Vale High Peak SK22 1DJ

£315,000



The Property

Simply Beautiful! A charming end terrace cottage lovingly restored and presented. Commanding breathtaking panoramic views to both the front and rear aspect, a stunning, two double bedroom home with loft room. Situated within a sought after semi-rural location, nestled in the hills overlooking Birch Vale and Hayfield with a wealth of character. Comprising: entrance vestibule, living room with wood burning stove, modern dining kitchen, two first floor double bedrooms, loft room with velux window and staircase off second bedroom and a luxurious bathroom. Delightful cottage gardens with paved sun terraces, established planting and views over Kinder Scout. Viewing essential.




- Stunning Views Across Open Countrywide
- Immaculately Presented Throughout
- Two Bedrooms Plus Useful Loft Room
- Beautiful Gardens with Panoramic Views of Kinder Scout
- Living Room with Wood Burning Stove
- Idyllic Location Close to Both Hayfield Village and New Mills
- Charming End Terraced Cottage
- Modern Bathroom Suite and Dining Kitchen

Postcode SK22 1DJ

EPC Rating E

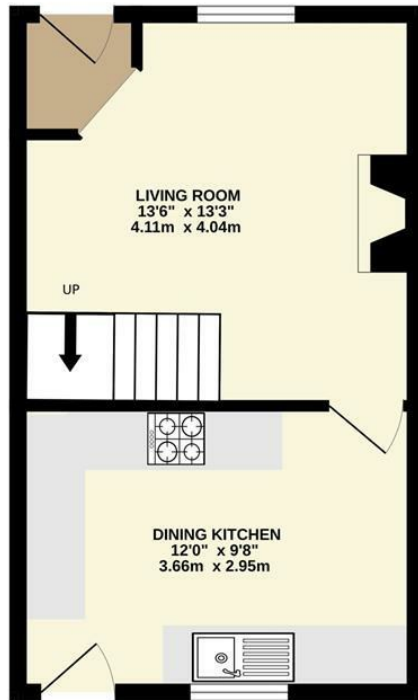
Local Authority High Peak

Council Tax B

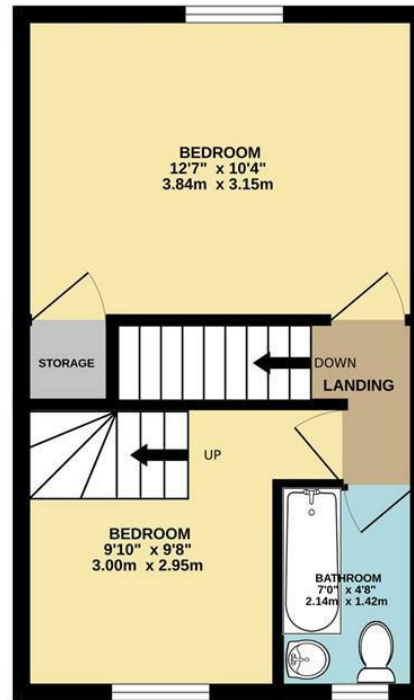
Energy Efficiency Rating		
	Current	Potential
Very energy efficient - lower running costs		
(92 plus) A		
(81-91) B		84
(69-80) C		
(55-68) D	53	
(39-54) E		
(21-38) F		
(1-20) G		
Not energy efficient - higher running costs		
England & Wales	EU Directive 2002/91/EC 	



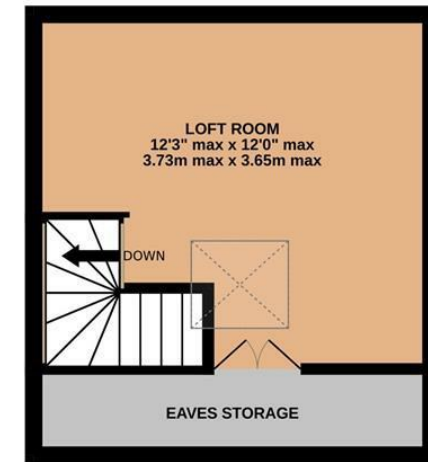
GROUND FLOOR



1ST FLOOR



2ND FLOOR



Whilst every attempt has been made to ensure the accuracy of the floorplan contained here, measurements of doors, windows, rooms and any other items are approximate and no responsibility is taken for any error, omission or mis-statement. This plan is for illustrative purposes only and should be used as such by any prospective purchaser. The services, systems and appliances shown have not been tested and no guarantee as to their operability or efficiency can be given.
Made with Metropix ©2024



These particulars are believed to be accurate but they are not guaranteed and do not form a contract. Neither Jordan Fishwick nor the vendor or lessor accept any responsibility in respect of these particulars, which are not intended to be statements or representations of fact and any intending purchaser or lessee must satisfy himself by inspection or otherwise as to the correctness of each of the statements contained in these particulars. Any floorplans on this brochure are for illustrative purposes only and are not necessarily to scale.

Offices at: Chorlton, Didsbury, Disley, Hale, Glossop, Macclesfield, Manchester Deansgate, Manchester Whitworth Street, New Mills, Sale, Wilmslow and Withington

2 Union Road, New Mills, High Peak, Derbyshire, SK22 3ES

01663 767878

newmills@jordanfishwick.co.uk

www.jordanfishwick.co.uk