



CURRENTLY NO VIEWING SLOTS
AVAILABLE

PLEASE CALL THE OFFICE TO
REGISTER YOUR INTEREST

jordan fishwick

158 Caldy Road, Handforth, SK9 3BS
PCM £900 PCM



Caldy Road Wilmslow SK9 3BS

£900 PCM



*****CURRENTLY FULLY BOOKED FOR VIEWINGS *****

FURNISHED AVAILABLE EARLY APRIL - VIEWING RECOMMENDED

Caldy Road is an extremely popular location in Handforth, within walking distance of the village centre and train station.

This attractive two bedroom first floor apartment benefits from its own private entrance and has an attractive outlook over the green.

Private entrance hall with stairs to first floor, lounge with laminate floor and storage, modern fitted kitchen with gas hob and electric oven, washing machine, fridge and small freezer, double bedroom with fitted wardrobe, second small double bedroom with fitted wardrobe, modern fitted bathroom suite. Gas central heating.


Outside storage. On road parking

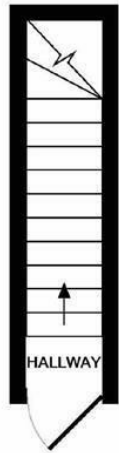
Contact Wilmslow 01625 536300 £900.00pcm.



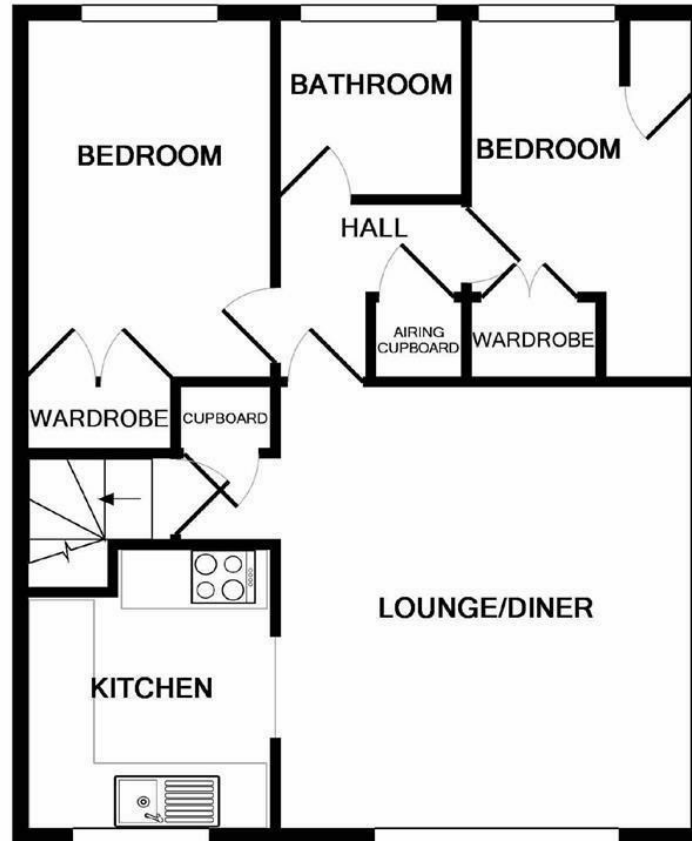
- FIRST FLOOR APARTMENT
- TWO BEDROOMS
- POPULAR LOCATION
- WALKING DISTANCE OF HANDFORTH
- COUNCIL TAX B



Energy Efficiency Rating		
	Current	Potential
<i>Very energy efficient - lower running costs</i>		
(92 plus) A		
(81-91) B		81
(69-80) C	70	
(55-68) D		
(39-54) E		
(21-38) F		
(1-20) G		
<i>Not energy efficient - higher running costs</i>		
England & Wales	EU Directive 2002/91/EC 	



GROUND FLOOR



1ST FLOOR

Whilst every attempt has been made to ensure the accuracy of the floor plan contained here, measurements of doors, windows, rooms and any other items are approximate and no responsibility is taken for any error, omission, or mis-statement. This plan is for illustrative purposes only and should be used as such by any prospective purchaser. The services, systems and appliances shown have not been tested and no guarantee as to their operability or efficiency can be given

Made with Metropix ©2019



These particulars are believed to be accurate but they are not guaranteed and do not form a contract. Neither Jordan Fishwick nor the vendor or lessor accept any responsibility in respect of these particulars, which are not intended to be statements or representations of fact and any intending purchaser or lessee must satisfy himself by inspection or otherwise as to the correctness of each of the statements contained in these particulars. Any floorplans on this brochure are for illustrative purposes only and are not necessarily to scale.

Offices at: Chorlton, Didsbury, Disley, Hale, Glossop, Macclesfield, Manchester Deansgate, Manchester Whitworth Street, New Mills, Sale, Wilmslow and Withington

01625 536300

wilmslow@jordanfishwick.co.uk

www.jordanfishwick.co.uk