



jordan fishwick

KNUTSFORD
Surrige



Surridge, Knutsford, WA16 6PU

£475,000



The Property

Jordan Fishwick are delighted to bring to market this enviable four bedroom detached property commanding a generous corner plot in High Legh. The location of this property is situated in a semi-rural location the outskirts of Knutsford and Lymm, both offering an array of amenities and schools. Within walking distance of Surridge is the local primary school of High Legh. In brief the property comprises: Porch, entrance hallway, kitchen, a large sitting area with access to the rear garden, dining area and the benefit of a downstairs shower room. To the first floor off the spacious landing are four good sized bedrooms and a family bathroom. To the front of the property are well manicured lawns with a driveway for numerous vehicles leading to the external garage. Whilst to the rear the property benefits from a mainly laid to lawn garden which is bordered by timber fencing. Viewings of this property are highly recommended.

Directions

WA16 6PU



- Detached Property
- Four Bedrooms
- Envious Corner Plot
- Off Road Parking
- Garage
- Large Living Area
- Walking Distance to High Legh Primary School
- Two Bathrooms

Postcode - WA16 6PU

EPC Rating -

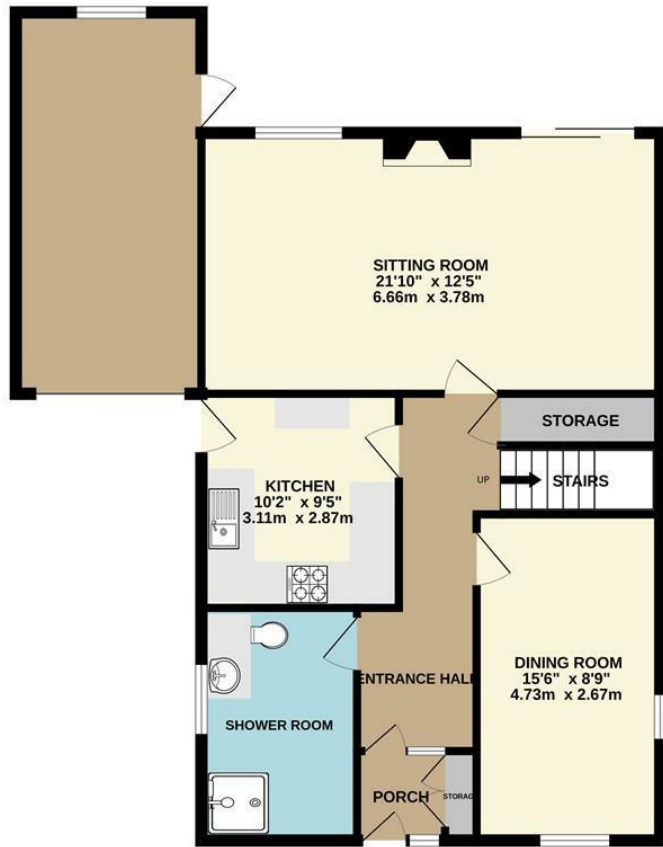
Floor Area - 1480.00 sq ft

Local Authority - Cheshire East

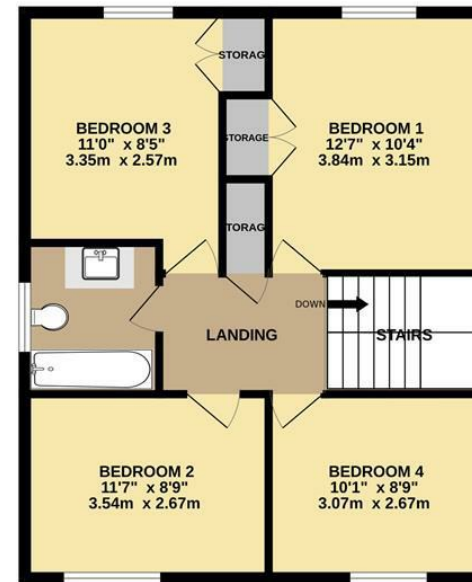
Council Tax - F



GROUND FLOOR
891 sq.ft. (82.8 sq.m.) approx.



1ST FLOOR
588 sq.ft. (54.7 sq.m.) approx.



TOTAL FLOOR AREA: 1480 sq.ft. (137.5 sq.m.) approx.

Whilst every attempt has been made to ensure the accuracy of the floorplan contained here, measurements of doors, windows, rooms and any other items are approximate and no responsibility is taken for any error, omission or mis-statement. This plan is for illustrative purposes only and should be used as such by any prospective purchaser. The services, systems and appliances shown have not been tested and no guarantee as to their operability or efficiency can be given.
Made with Metropix ©2024



These particulars are believed to be accurate but they are not guaranteed and do not form a contract. Neither Jordan Fishwick nor the vendor or lessor accept any responsibility in respect of these particulars, which are not intended to be statements or representations of fact and any intending purchaser or lessee must satisfy himself by inspection or otherwise as to the correctness of each of the statements contained in these particulars. Any floorplans on this brochure are for illustrative purposes only and are not necessarily to scale.

Offices at: Chorlton, Didsbury, Disley, Hale, Glossop, Macclesfield, Manchester Deansgate, Manchester Whitworth Street, New Mills, Sale, Wilmslow and Withington

0161 929 9797

hale@jordanfishwick.co.uk
www.jordanfishwick.co.uk