



*jordan fishwick*

MANCHESTER  
Burnage Lane



## Burnage Lane, Manchester, M19 2HE

Offers In Excess Of £70,000

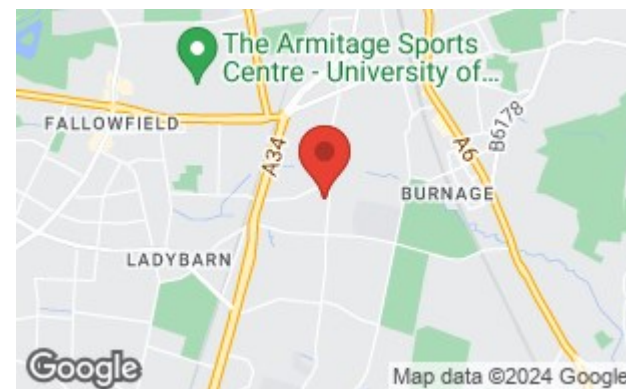


### The Property

**\*\*OVER 60's ONLY\*\*** - Ready to move into, this first floor retirement apartment, convenient location on an established residential road which is close to all local amenities, in addition to lift access, residents parking, attractive communal grounds, 24 hour emergency call system, on-site residential manager and social communal areas. The living space is well presented throughout and includes a spacious living room with Juliet balcony, a modern fitted kitchen with built in appliances & fitted white suite bathroom, a double bedroom with fitted wardrobes and a good sized hallway with built-in storage cupboard. In addition, there is uPVC double glazing and NO ONWARD CHAIN.

### Directions

M19 2HE



- Double bedroom with fitted storage
- First floor location
- Lift Access
- Fitted modern kitchen
- Juliet balcony
- Residents off road parking
- Private resident's garden
- Communal living areas
- NO CHAIN

Postcode - M19 2HE

EPC Rating - B

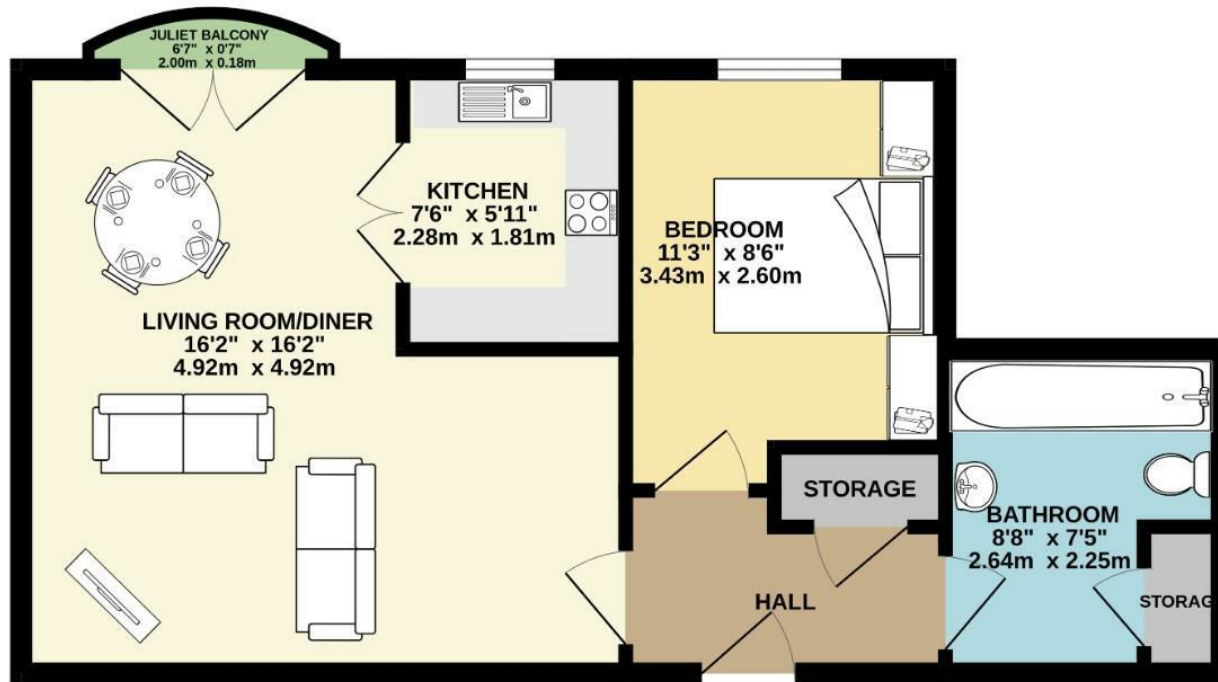
Floor Area - 462.00 sq ft

Local Authority - Manchester City Council

Council Tax - B



FIRST FLOOR  
462 sq.ft. (43.0 sq.m.) approx.



TOTAL FLOOR AREA : 462 sq.ft. (43.0 sq.m.) approx.  
Measurements are approximate. Not to scale. Illustrative purposes only.  
Made with Metropix ©2024



These particulars are believed to be accurate but they are not guaranteed and do not form a contract. Neither Jordan Fishwick nor the vendor or lessor accept any responsibility in respect of these particulars, which are not intended to be statements or representations of fact and any intending purchaser or lessee must satisfy himself by inspection or otherwise as to the correctness of each of the statements contained in these particulars. Any floorplans on this brochure are for illustrative purposes only and are not necessarily to scale.

Offices also at: Wilmslow, Macclesfield, Hale, Sale, Chorlton, Glossop, Manchester & Salford

757-759 Wilmslow Road, Didsbury Village, Manchester

0161 445 4480

didsbury@jordanfishwick.co.uk  
www.jordanfishwick.co.uk