



jordan fishwick

Meadow Lane Disley Stockport

Meadow Lane Disley Stockport SK12 2ES

£210,000



The Property

Towards the head of a popular no through road in Disley Village, a charming red-brick mid terraced cottage. Offered for sale with No Chain and boasting a private south facing enclosed garden. Well presented and potential to update, this home is perfect for the first time buyer. Comprising: entrance porch, living room, spacious dining kitchen, two first floor bedrooms and a bathroom with a modern white suite. Pvc double glazing and gas central heating. Viewing highly recommended.




- Popular No Through Road Position
- Close To Disley Village
- South Facing Garden
- Two Bedroom Terrace
- No Chain
- Well Presented Accommodation
- Pvc Double Glazing and Gas Central Heating
- Modern Re-fitted Bathroom
- Pleasant Forward Views
- Ideal for the First Time Buyer

Postcode SK12 2ES

EPC Rating

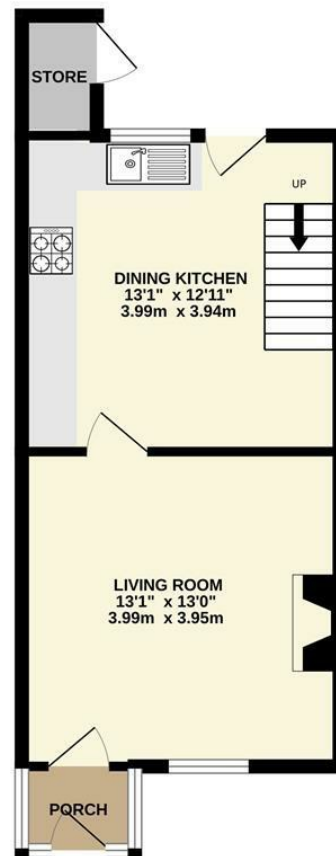
Local Authority Cheshire East

Council Tax B

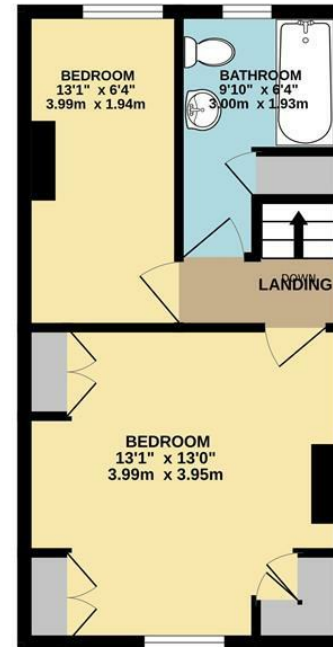
Energy Efficiency Rating		
	Current	Potential
Very energy efficient - lower running costs		
(92 plus) A		
(81-91) B		
(69-80) C		
(55-68) D		
(39-54) E		
(21-38) F		
(1-20) G		
Not energy efficient - higher running costs		
England & Wales	EU Directive 2002/91/EC 	



GROUND FLOOR



1ST FLOOR



Whilst every attempt has been made to ensure the accuracy of the floorplan contained here, measurements of doors, windows, rooms and any other items are approximate and no responsibility is taken for any error, omission or mis-statement. This plan is for illustrative purposes only and should be used as such by any prospective purchaser. The services, systems and appliances shown have not been tested and no guarantee as to their operability or efficiency can be given.
Made with Metropix ©2024



These particulars are believed to be accurate but they are not guaranteed and do not form a contract. Neither Jordan Fishwick nor the vendor or lessor accept any responsibility in respect of these particulars, which are not intended to be statements or representations of fact and any intending purchaser or lessee must satisfy himself by inspection or otherwise as to the correctness of each of the statements contained in these particulars. Any floorplans on this brochure are for illustrative purposes only and are not necessarily to scale.

Offices at: Chorlton, Didsbury, Disley, Hale, Glossop, Macclesfield, Manchester Deansgate, Manchester Whitworth Street, New Mills, Sale, Wilmslow and Withington

14 Market Street, Disley, Cheshire, SK12 2AA

01663 76 78 78

disley@jordanfishwick.co.uk

www.jordanfishwick.co.uk