



*Jordan fishwick*

WITHINGTON  
Wilmslow Road



## Wilmslow Road, Withington, M20 3LU

£190,000



### The Property

A stylish and beautifully presented top floor apartment conveniently situated for the village centre and all amenities. The accommodation will prove ideal for the couple, first time buyer or buy to let landlord and comprises: entrance hall, open plan living/kitchen with integrated appliances, bedroom with en suite shower room, second double bedroom and a bathroom with a three piece white suite. Gas central heating with a new Worcester Boiler installed in Summer 2023 and comes with a 10 year warranty & is supported by double glazed windows throughout. Communal lawned gardens and private allocated residents off road parking plus additional visitor spaces to the rear complete the impressive specification. Viewing of this fine home is most highly recommended.

### Directions

M20 3LU



- Two double bedroom top floor apartment
- Open plan Lounge, dining area & kitchen
- Fitted main bathroom
- En-suite shower room
- Withington village location
- Off road allocated parking
- New boiler installed Summer 2023 with 10 year warranty
- Excellent transport links
- Central heating & Double glazing

Postcode - M20 3LU

EPC Rating - C

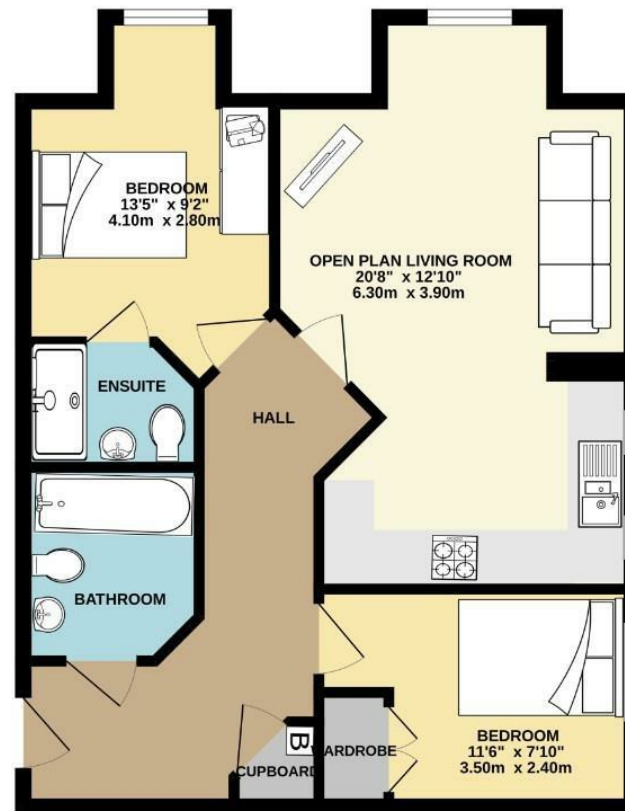
Floor Area - 574.00 sq ft

Local Authority - Manchester City Council

Council Tax - B



TOP FLOOR  
574 sq.ft. (53.3 sq.m.) approx.



TOTAL FLOOR AREA : 574 sq.ft. (53.3 sq.m.) approx.  
Measurements are approximate. Not to scale. Illustrative purposes only.  
Made with Metropix ©2024



These particulars are believed to be accurate but they are not guaranteed and do not form a contract. Neither Jordan Fishwick nor the vendor or lessor accept any responsibility in respect of these particulars, which are not intended to be statements or representations of fact and any intending purchaser or lessee must satisfy himself by inspection or otherwise as to the correctness of each of the statements contained in these particulars. Any floorplans on this brochure are for illustrative purposes only and are not necessarily to scale.

Offices also at: Wilmslow, Macclesfield, Hale, Sale, Chorlton, Glossop, Manchester & Salford

757-759 Wilmslow Road, Didsbury Village, Manchester

0161 445 4480

didsbury@jordanfishwick.co.uk  
www.jordanfishwick.co.uk