



jordan fishwick

BURNAGE
Dahlia Close



Dahlia Close, Burnage, M19 1TA

£187,500



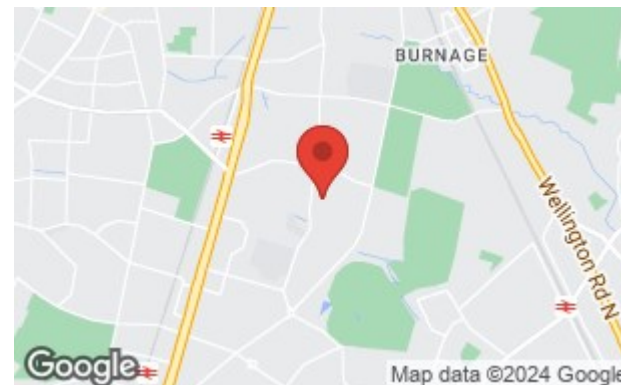
The Property

**** 75% EQUITY & 55 YEARS OR ABOVE**** - An appealing, two bedroom bungalow forming part of a quiet purpose built courtyard development in Burnage. Tastefully presented throughout with the benefits of both gascentral heating and uPVC double glazing, the living space in outline comprises:- Entrance hallway, living room with patio doors out to rear garden, spacious kitchen, two double bedrooms and tiled shower room. Externally, there is an attractive rear garden to two sides and residents parking to the front. No onward chain.

The property is being sold in conjunction with Onward Homes and purchasers will be buying 75% equity. A monthly service charge (currently £60.17 PCM) is payable.

Directions

M19 1TA



- 75% equity
- 55 years or above
- Appealing modern bungalow
- Courtyard development
- Gardens to two sides
- Two double bedrooms
- Gas central heating
- uPVC double glazing
- Residents parking to the front
- NO CHAIN

Postcode - M19 1TA

EPC Rating - C

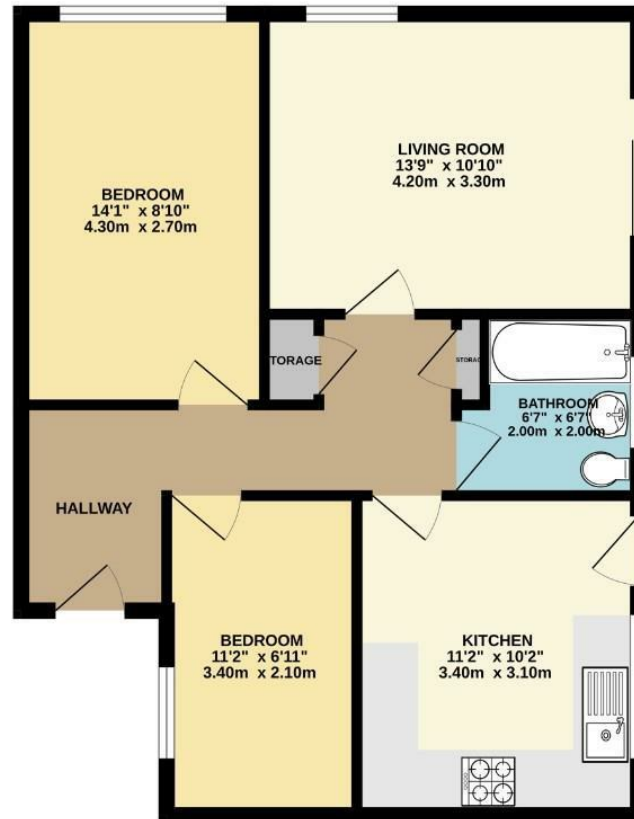
Floor Area - 606.00 sq ft

Local Authority - Manchester City Council

Council Tax - B



GROUND FLOOR
606 sq.ft. (56.3 sq.m.) approx.



TOTAL FLOOR AREA : 606 sq.ft. (56.3 sq.m.) approx.
Measurements are approximate. Not to scale. Illustrative purposes only
Made with Metropix ©2024



These particulars are believed to be accurate but they are not guaranteed and do not form a contract. Neither Jordan Fishwick nor the vendor or lessor accept any responsibility in respect of these particulars, which are not intended to be statements or representations of fact and any intending purchaser or lessee must satisfy himself by inspection or otherwise as to the correctness of each of the statements contained in these particulars. Any floorplans on this brochure are for illustrative purposes only and are not necessarily to scale.

Offices also at: Wilmslow, Macclesfield, Hale, Sale, Chorlton, Glossop, Manchester & Salford

757-759 Wilmslow Road, Didsbury Village, Manchester

0161 445 4480

didsbury@jordanfishwick.co.uk
www.jordanfishwick.co.uk