



STEPPING STONES  
SOLD  
01457 850953

THE  
OLD  
GLOVE  
WORKS  
APARTMENTS





# Apt 11 The Old Glove Works George Street, Glossop, Derbyshire, SK13 8AY

**\*\* SEE OUR VIDEO TOUR \*\*** An immaculate riverside apartment in the centre of Glossop, part of a converted cotton mill, adjoining Glossop Brook and park. Located on the second floor the apartment briefly comprises an entrance hallway with storage, a spacious open plan living room with Juliet balcony and modern kitchen with appliances, two bedrooms and a modern bathroom with shower. Allocated parking space at the front of the building. Energy Rating C

## Guide Price £185,000

### Viewing arrangements

Viewing strictly by appointment through the agent

44 High Street West, Glossop, Derbyshire, SK13 8BH 01457 858888

### Directions

From our office on High Street West cross over the road onto George Street and at the end cross over Chapel Street and the apartments are at the end on the left hand side.

### GROUND FLOOR

#### Communal Entrance Hall

Stairs to all floors.

### SECOND FLOOR

#### Entrance Hall

Entry phone, electric heater, double glazed front window, storage cupboards and doors to:

### Open Plan Living Room

16'6" (max) x 13'1"

Two double glazed windows and door with Juliet balcony overlooking the brook, electric heater, tv aerial point and opening to:

### Kitchen Area

10'6" x 7'10" (max meas)

A range of contemporary fitted kitchen units including base cupboards and drawers, plumbing for an automatic washing machine, integrated dishwasher, built-in electric oven, work tops over with an inset single drainer stainless steel sink unit, ceramic hob and filter hood, integrated fridge freezer and wall cupboards with pelmet lighting.

## Bedroom One

13'4" x 8'11"

Double glazed window and electric heater.

## Bedroom Two

10'0" x 9'3" (max)

Double glazed window and electric heater.

## Bathroom

A white three piece suite including a panelled shower bath with shower over and shower screen, pedestal wash hand basin with mixer tap and close coupled wc, shaver point, double glazed window and chrome finish towel radiator.

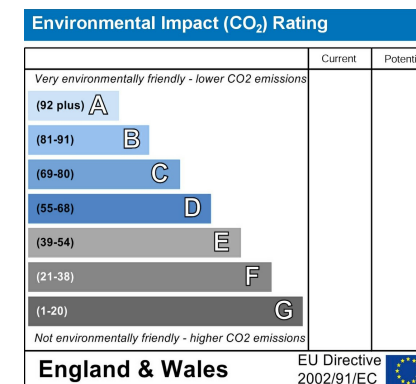
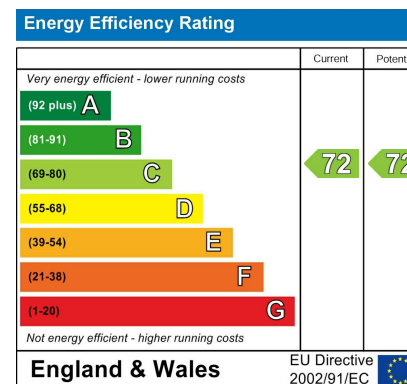
## OUTSIDE

### Allocated Parking Space

### Service Charge

Details available on request

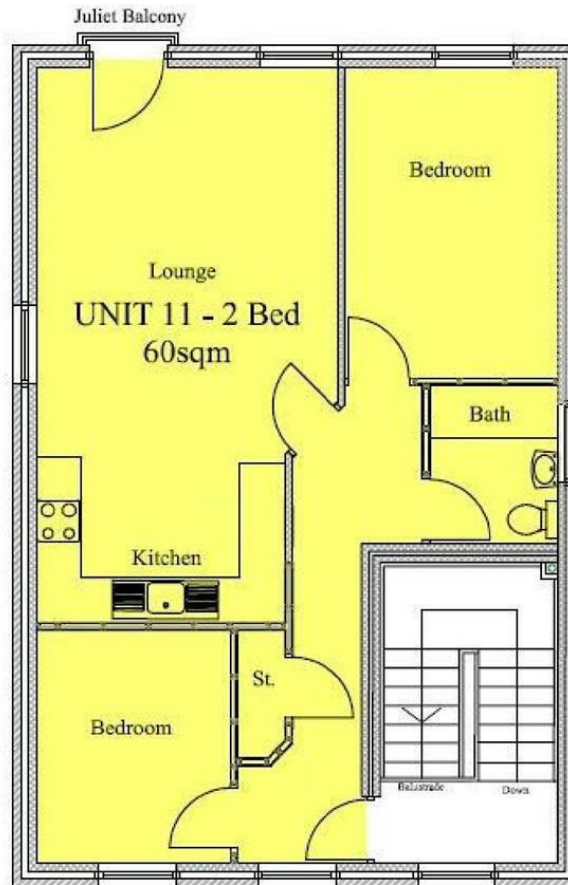
Our ref: Cms/cms/0306/24











These particulars are believed to be accurate but they are not guaranteed and do not form a contract. Neither Jordan Fishwick nor the vendor or lessor accept any responsibility in respect of these particulars, which are not intended to be statements or representations of fact and any intending purchaser or lessee must satisfy himself by inspection or otherwise as to the correctness of each of the statements contained in these particulars. Any floorplans on this brochure are for illustrative purposes only and are not necessarily to scale.

Offices at: Chorlton, Didsbury, Disley, Hale, Glossop, Macclesfield, Manchester Deansgate, Manchester Whitworth Street, New Mills, Sale, Wilmslow and Withington

44 High Street West, Glossop, Derbyshire, SK13 8BH

01457 858888

[glossop@jordanfishwick.co.uk](mailto:glossop@jordanfishwick.co.uk)  
[www.jordanfishwick.co.uk](http://www.jordanfishwick.co.uk)

