



*jordan fishwick*

**BURNAGE**  
Northbank Gardens





## Northbank Gardens, Burnage, M19 1BE

Guide Price £310,000

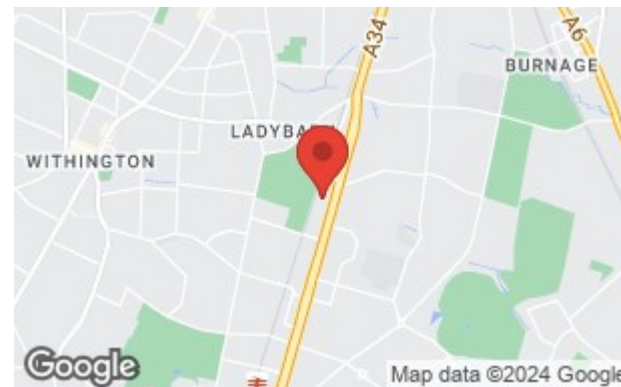


### The Property

A recently constructed (2019) semi detached property with stylish and well planned living space throughout, located at the head of a residential cul-de-sac with a good sized westerly facing garden and driveway. (922 sq ft). Warmed by gas central heating which is further complemented by uPVC double glazing throughout, in outline :- Spacious entrance hall with downstairs WC off, separate lounge, dining kitchen with a range of fitted units and French doors opening to the rear garden, three good sized bedrooms, the main with an en-suite shower room and the family bathroom.

### Directions

M19 1BE





- Modern semi detached property
- Constructed in 2019
- Three good sized bedrooms
- Master with en-suite shower room
- Family bathroom & downstairs WC
- Dining kitchen with a range of units
- Separate living room
- GCH & uPVC double glazing
- Westerly facing garden & driveway

Postcode - M19 1BE

EPC Rating - B

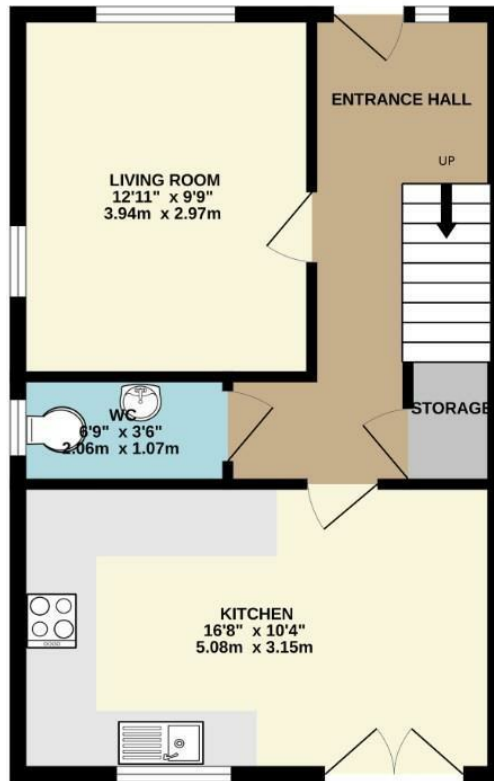
Floor Area - 922.00 sq ft

Local Authority - Manchester City Council

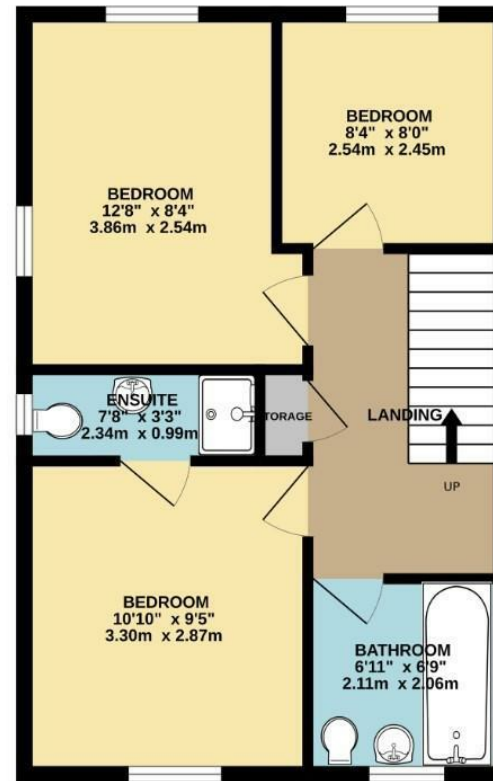
Council Tax - A



GROUND FLOOR  
461 sq.ft. (42.8 sq.m.) approx.



1ST FLOOR  
461 sq.ft. (42.8 sq.m.) approx.



TOTAL FLOOR AREA : 922 sq.ft. (85.7 sq.m.) approx.  
Measurements are approximate. Not to scale. Illustrative purposes only  
Made with Metroplan ©2024



These particulars are believed to be accurate but they are not guaranteed and do not form a contract. Neither Jordan Fishwick nor the vendor or lessor accept any responsibility in respect of these particulars, which are not intended to be statements or representations of fact and any intending purchaser or lessee must satisfy himself by inspection or otherwise as to the correctness of each of the statements contained in these particulars. Any floorplans on this brochure are for illustrative purposes only and are not necessarily to scale.

Offices also at: Wilmslow, Macclesfield, Hale, Sale, Chorlton, Glossop, Manchester & Salford

757-759 Wilmslow Road, Didsbury Village, Manchester

0161 445 4480

didsbury@jordanfishwick.co.uk  
www.jordanfishwick.co.uk