



Jordan fishwick

Flat 1 1 Birch Lane, Longsight, M13 0NW
£1,100 Per Calendar Month



1 Birch Lane Manchester M13 0NW

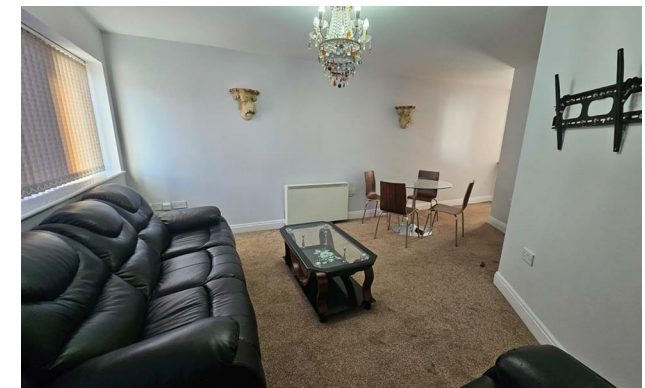
£1,100 Per Calendar Month



The Property

Available Late March. Jordan Fishwick are delighted to present this modern, Ground floor apartment only a short walk from the amenities of Longsight. Accommodation briefly comprises entrance hallway with two storage cupboards off, good size double bedroom and second single bedroom. Open-plan lounge/ kitchen with fridge/ freezer and washing machine. Contemporary family bathroom. Furnished. Secure parking. EPC Rating C. Tax Band B.

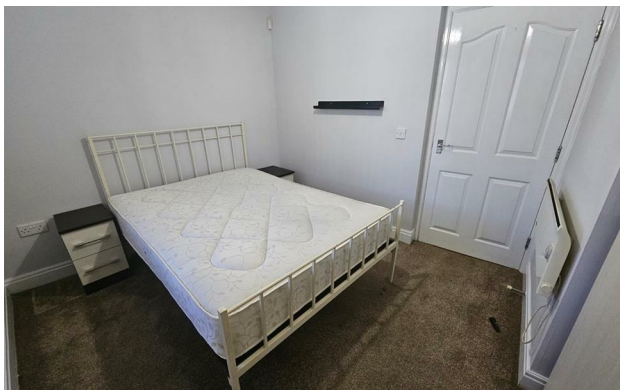
VIDEO/ PHOTO OFFERS NOT ACCEPTED - PLEASE CALL TO BOOK A VIEIWNG



- Available Late March
- Ground Floor
- Two Bedrooms
- Furnished
- Secure Parking
- Tax Band B
- EPC Rating C



Energy Efficiency Rating		
	Current	Potential
Very energy efficient - lower running costs		
(92 plus) A		
(81-91) B		
(69-80) C	75	78
(55-68) D		
(39-54) E		
(21-38) F		
(1-20) G		
Not energy efficient - higher running costs		
England & Wales	EU Directive 2002/91/EC	





These particulars are believed to be accurate but they are not guaranteed and do not form a contract. Neither Jordan Fishwick nor the vendor or lessor accept any responsibility in respect of these particulars, which are not intended to be statements or representations of fact and any intending purchaser or lessee must satisfy himself by inspection or otherwise as to the correctness of each of the statements contained in these particulars. Any floorplans on this brochure are for illustrative purposes only and are not necessarily to scale.

Offices at: Offices at Chorlton, Didsbury, Disley, Hale, Glossop, Macclesfield, Manchester Deansgate, Manchester Whitworth Street, New Mills, Sale, Wilmslow and Withington