



Jordan fishwick

236d Manley Road, M21 0RU
Guide Price £290,000



Manley Road Chorlton M21 0RU

Guide Price £290,000



The Property

**** NO ONWARD CHAIN **** An attractive TWO DOUBLE BEDROOM END MEWS property located on a popular road and offered in pleasant order throughout. This particular home will appeal to a range of buyers including first time buyers, buy to let investors and those looking to downsize and benefits from both a DRIVEWAY providing off road parking and a good sized rear garden. Located only a short walk from all local amenities in Chorlton Village, parks and transport links, this delightful property is not one to be missed. Comprising briefly: Enclosed porch, spacious living room, fitted dining kitchen, two well-proportioned bedrooms and a bathroom fitted with a three piece suite. Gas central heating and uPVC double glazing are also installed. A driveway provides off-road car parking to the front whilst to the rear is a good size garden that is fenced and enclosed. Viewing highly recommended.

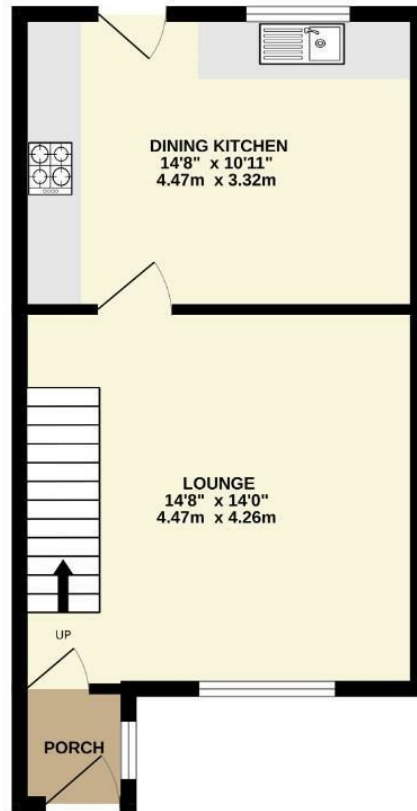
- NO ONWARD CHAIN
- Modern End Mews
- Two Good Size Bedrooms
- Well Proportioned Living Room
- Fitted Dining Kitchen
- Private Rear Garden
- Driveway Providing Off Road Parking
- Gas Fired Central Heating
- Viewing Highly Recommended
- Convenient to local Ammenities



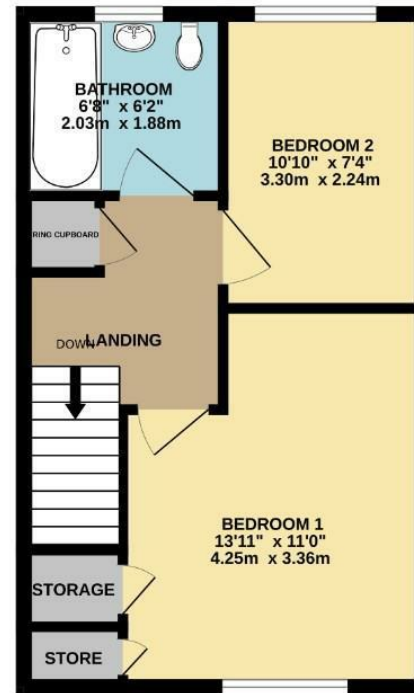
Energy Efficiency Rating		
	Current	Potential
Very energy efficient - lower running costs		
(92 plus) A		
(81-91) B		85
(69-80) C	71	
(55-68) D		
(39-54) E		
(21-38) F		
(1-20) G		
Not energy efficient - higher running costs		
England & Wales	EU Directive 2002/91/EC	



GROUND FLOOR



1ST FLOOR



TOTAL FLOOR AREA: 746 sq.ft. (69.3 sq.m.) approx.
Measurements are approximate. Not to scale. Illustrative purposes only.
Made with: Metroplan ©2023



These particulars are believed to be accurate but they are not guaranteed and do not form a contract. Neither Jordan Fishwick nor the vendor or lessor accept any responsibility in respect of these particulars, which are not intended to be statements or representations of fact and any intending purchaser or lessee must satisfy himself by inspection or otherwise as to the correctness of each of the statements contained in these particulars. Any floorplans on this brochure are for illustrative purposes only and are not necessarily to scale.

Offices at: Chorlton, Didsbury, Disley, Hale, Glossop, Macclesfield, Manchester Deansgate, Manchester Whitworth Street, New Mills, Sale, Wilmslow and Withington