

THE OLD
CHAPEL HOUSE

THE OLD
CHAPEL HOUSE



7 The old Chapel House, Shrewsbury Street, Glossop, Derbyshire, SK13 7BX

**** SEE OUR VIDEO TOUR **** A spacious town centre duplex apartment, part of a converted Chapel and School House within the Wren Nest Conservation Area and only a short walk away from the shops and railway station. The living space, which is arranged over two floors, briefly comprising a communal entrance hallway with stairs to the first floor, a private hallway, an open plan living room and fitted kitchen with integrated appliances and enjoying views over Glossop, a bathroom with shower, a bedroom with fitted furniture and stairs lead to the main bedroom and en-suite shower room. Electric central heating and off road parking. Contemporary living within a historical building of interest. Energy Rating

£165,000

Viewing arrangements

Viewing strictly by appointment through the agent

44 High Street West, Glossop, Derbyshire, SK13 8BH 01457 858888

Directions

From our office on High Street West proceed in a westerly direction through the first set of traffic lights and turn next right onto Shrewsbury Street. Proceed up the hill and The Old School House can be found on the left hand side.

GROUND FLOOR

Main Entrance

Main entrance doors, meter room and stairs to:

FIRST FLOOR

Private Entrance Hall

Central heating radiator, spindled stairs leading to Bedroom
One, understairs cupboard and leading through to:

Open Plan Living Room

13'10" (max) x 12'9" (max) 11'2" (min)

Central heating radiator, window with views over Glossop, vaulted ceiling and opening to:

Kitchen

7'1" x 5'10"

A range of fitted kitchen units including base cupboards and drawers, integrated slimline dishwasher and washer dryer, electric oven, work tops over with an inset single drainer stainless steel sink unit and mixer tap, ceramic hob and filter hood, integrated fridge/freezer, microwave and wall cupboards.

Bedroom Two

10'10" x 8'5" (max meas less fitted furniture)

Central heating radiator, fitted wardrobes and bedside cabinets.

Bathroom

A white suite including a panelled whirlpool bath with shower over and shower screen, low level wc, half pedestal wash hand basin, chrome finish towel radiator and shaver point.

UPPER FIRST FLOOR

Bedroom One

11'0" x 10'4" (less fitted furniture) plus landi

Central heating radiator, spindled balustrade, landing area and fire escape, boiler cupboard, fitted wardrobes, dressing table, bedside cabinets and bedhead.

En-Suite Shower Room

A white suite including a corner shower cubicle, pedestal wash hand basin and mixer tap, low level wc, chrome finish towel radiator, extractor fan and sun tunnel.

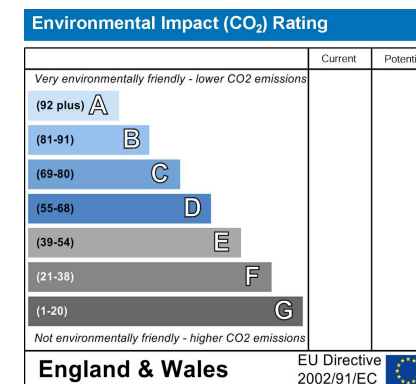
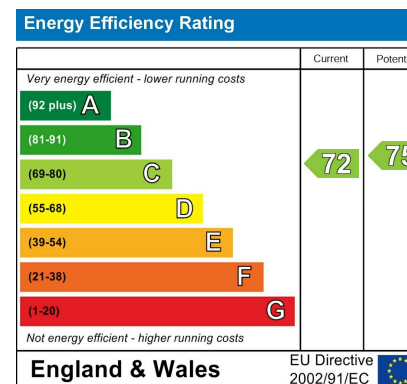
OUTSIDE

Communal Gardens & Parking

Service Charge

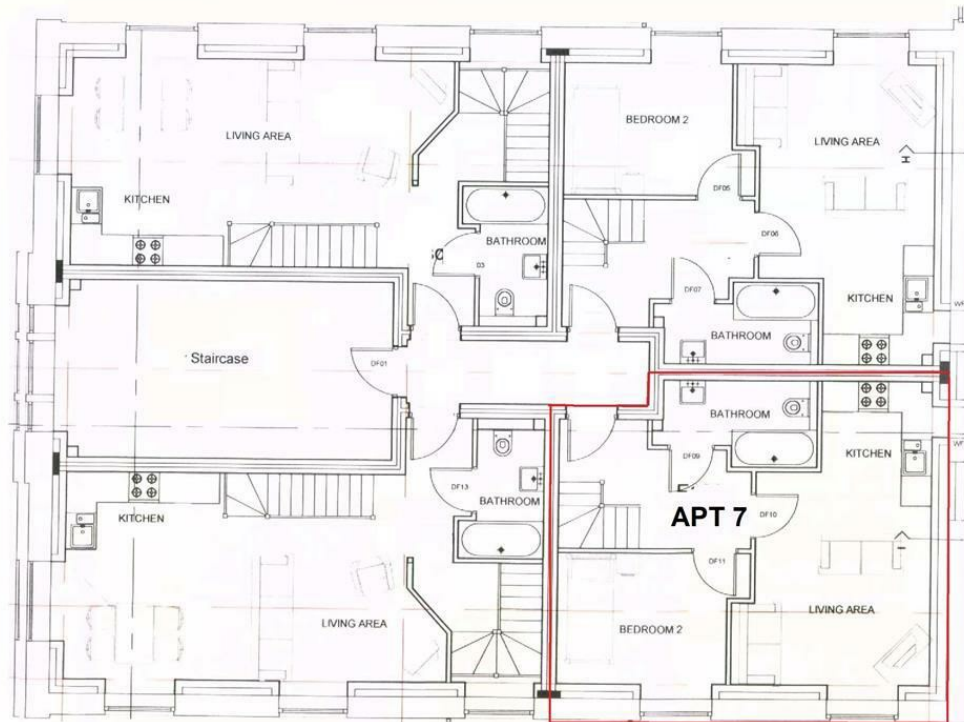
Details available on request

Our ref: Cms/cms/0216/24

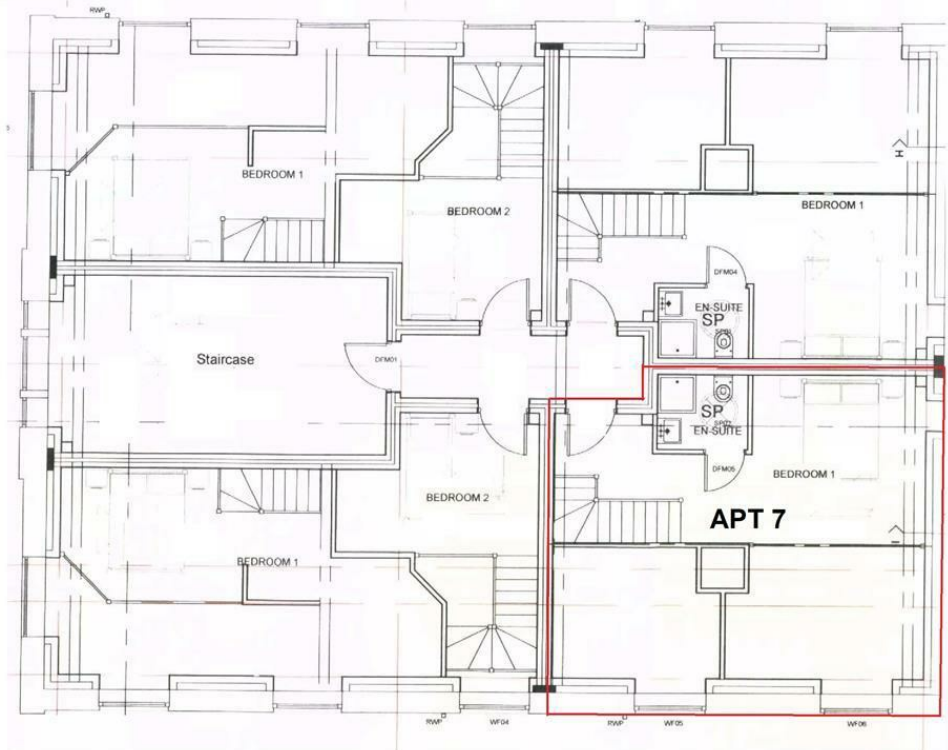




FIRST FLOOR



UPPER FIRST FLOOR



These particulars are believed to be accurate but they are not guaranteed and do not form a contract. Neither Jordan Fishwick nor the vendor or lessor accept any responsibility in respect of these particulars, which are not intended to be statements or representations of fact and any intending purchaser or lessee must satisfy himself by inspection or otherwise as to the correctness of each of the statements contained in these particulars. Any floorplans on this brochure are for illustrative purposes only and are not necessarily to scale.

Offices at: Chorlton, Didsbury, Disley, Hale, Glossop, Macclesfield, Manchester Deansgate, Manchester Whitworth Street, New Mills, Sale, Wilmslow and Withington

44 High Street West, Glossop, Derbyshire, SK13 8BH

01457 858888

glossop@jordanfishwick.co.uk
www.jordanfishwick.co.uk

