



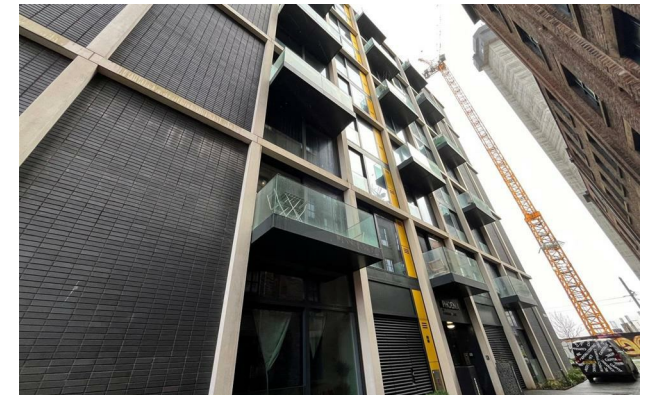
jordan fishwick

Apt 202 Phoenix, Chapelton Street, M1
£1,049 Per Calendar Month



Phoenix Manchester M1 2EY

£1,049 Per Calendar Month



The Property

Available Now. Jordan Fishwick presents this stunning, design led one bedroom Studio apartment by Capital & Centric. With an abundance of modern industrial style and benefitting from a private balcony AND residents garden, bike storage and onsite concierge, Phoenix apartments is one NOT to be missed!


Second Floor, open plan aspect, with storage options carefully considered. Laminate flooring throughout with kitchen/ living space complete with top spec integrated appliances, including fridge freezer. Furnished throughout and benefitting with a private balcony. Bedroom area with wardrobes & built in shelving. Council Tax Band B. EPC Rating C. No Parking.

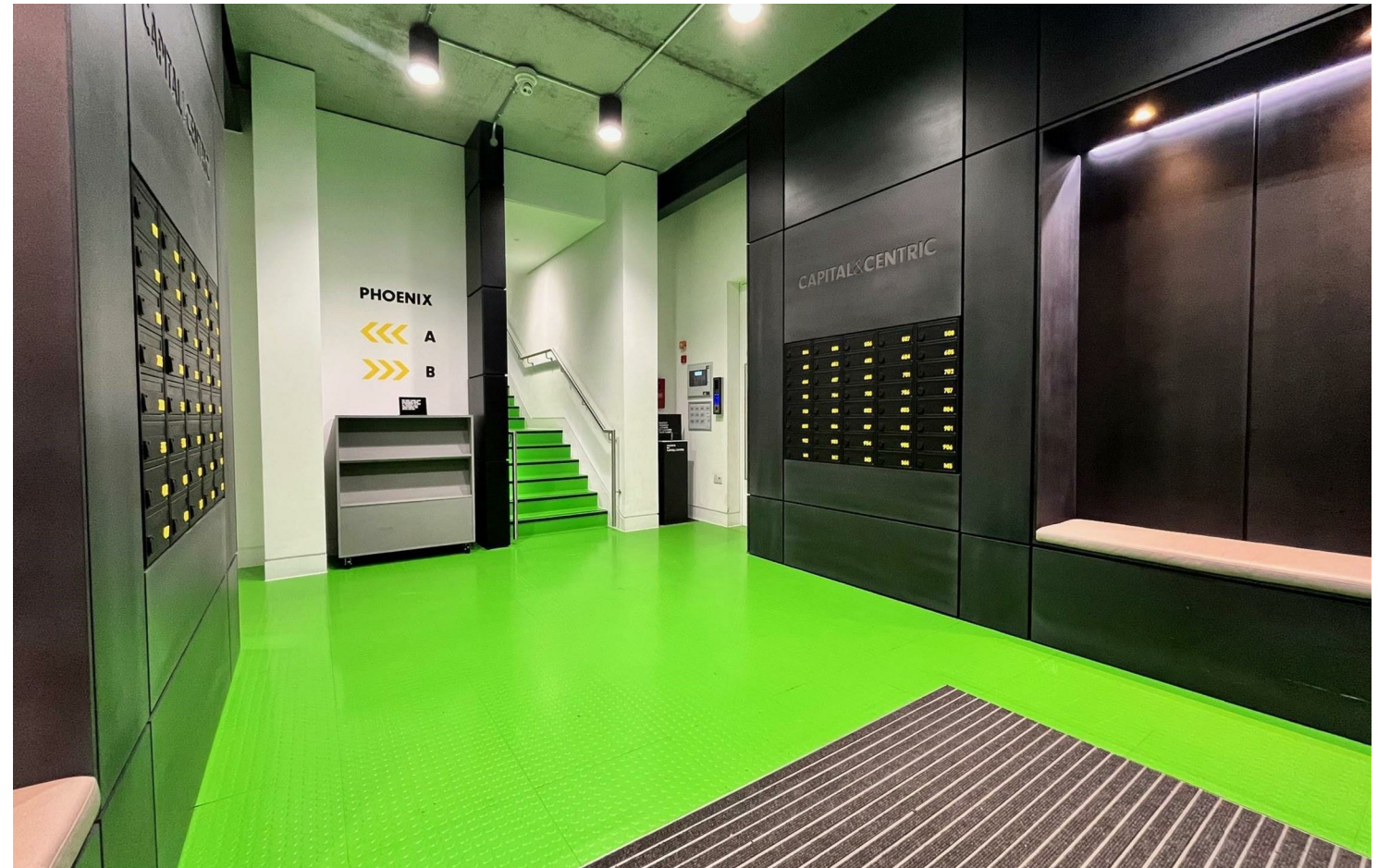
VIDEO/ PHOTO OFFERS NOT ACCEPTED - PLEASE CALL TO BOOK A VIEWING



- Available Now
- 1 Bedroom Studio Apartment
- 2nd Floor
- Balcony
- Close to Transport Links
- Close to City Centre
- No Parking
- Tax Band B



Energy Efficiency Rating		
	Current	Potential
Very energy efficient - lower running costs		
(92 plus) A		
(81-91) B	78	78
(69-80) C		
(55-68) D		
(39-54) E		
(21-38) F		
(1-20) G		
Not energy efficient - higher running costs		
England & Wales	EU Directive 2002/91/EC 	





These particulars are believed to be accurate but they are not guaranteed and do not form a contract. Neither Jordan Fishwick nor the vendor or lessor accept any responsibility in respect of these particulars, which are not intended to be statements or representations of fact and any intending purchaser or lessee must satisfy himself by inspection or otherwise as to the correctness of each of the statements contained in these particulars. Any floorplans on this brochure are for illustrative purposes only and are not necessarily to scale.

Offices at: Offices at Chorlton, Didsbury, Disley, Hale, Glossop, Macclesfield, Manchester Deansgate, Manchester Whitworth Street, New Mills, Sale, Wilmslow and Withington