



jordan fishwick

WEST DIDSBURY
Barlow Moor Road



Barlow Moor Road, West Didsbury, M20 2UT

£280,000



The Property

A MOST APPEALING, TWO DOUBLE BEDROOM APARTMENT OFFERING STYLISH LIVING SPACE OVER TWO FLOORS, FORMING PART OF AN ATTRACTIVE PERIOD CONVERSION WITH A GREAT LOCATION IN WEST DIDSBURY. 783 sq ft. The property offers numerous noteworthy features including a delightful open plan living/kitchen area with oak floor, fireplace providing a great focal point and a re-fitted kitchen with a range of base and eye level units and useful breakfast bar. The lower ground floor gives way to two double bedrooms and a re-fitted bathroom with white suite. In addition, there are double glazed windows and gas fired central heating. Externally, there is a gated residents car park to the rear. The property is perfectly placed to take advantage of the Metrolink, with a station on Lapwing Lane and the popular bars and restaurants on Burton Road.

Directions

M20 2UT



- Stylish apartment
- Accommodation over two floors
- Open plan living/kitchen
- Two double bedrooms
- Re-fitted kitchen & bathroom
- Gas central heating
- Double glazed windows
- Gated residents parking
- Great location

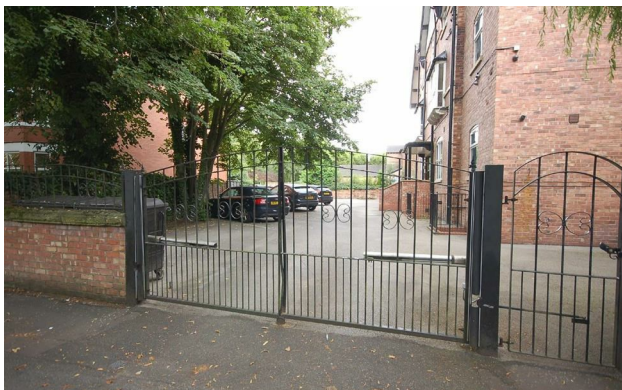
Postcode - M20 2UT

EPC Rating - C

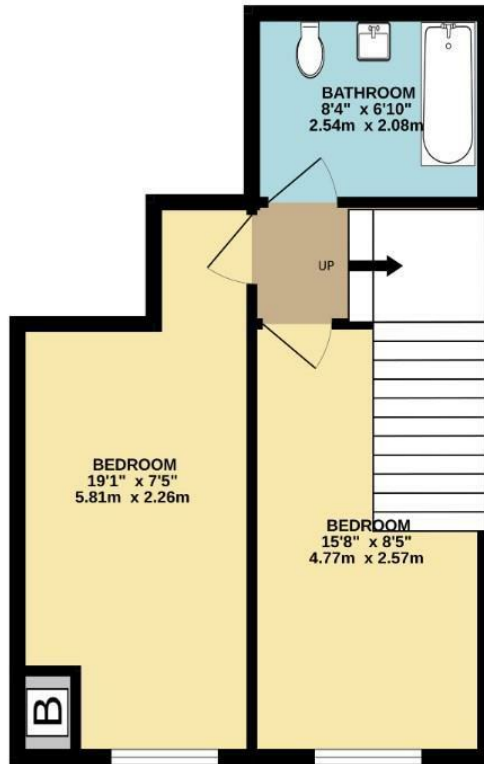
Floor Area - 777.00 sq ft

Local Authority - Manchester City Council

Council Tax - C



LOWER GROUND FLOOR
375 sq.ft. (34.8 sq.m.) approx.



GROUND FLOOR
403 sq.ft. (37.4 sq.m.) approx.



TOTAL FLOOR AREA : 777 sq.ft. (72.2 sq.m.) approx.
Measurements are approximate. Not to scale. Illustrative purposes only
Made with Metropix ©2024



These particulars are believed to be accurate but they are not guaranteed and do not form a contract. Neither Jordan Fishwick nor the vendor or lessor accept any responsibility in respect of these particulars, which are not intended to be statements or representations of fact and any intending purchaser or lessee must satisfy himself by inspection or otherwise as to the correctness of each of the statements contained in these particulars. Any floorplans on this brochure are for illustrative purposes only and are not necessarily to scale.

Offices also at: Wilmslow, Macclesfield, Hale, Sale, Chorlton, Glossop, Manchester & Salford

757-759 Wilmslow Road, Didsbury Village, Manchester

0161 445 4480

didsbury@jordanfishwick.co.uk
www.jordanfishwick.co.uk