



jordan fishwick

11 Kingsbury Drive, Wilmslow, SK9 2GU
PCM £2,400 PCM



Kingsbury Drive Cheshire SK9 2GU

£2,400 PCM



PART FURNISHED AVAILABLE NOW

Occupying a pleasant position amongst the prestigious Regents Park development, this lovely four bedroom detached family home. Presented to a high standard throughout with well planned, spacious accommodation and benefitting from a fully enclosed South facing rear garden and a good sized front driveway leading to the integral garage.

Entrance hallway, cloakroom/wc, lounge with double doors opening into the dining room, conservatory with doors to sunny rear garden with decked area, dining kitchen, utility room.

To the first floor there is a master bedroom with fitted wardrobes and en suite shower room, three further double bedrooms two with fitted and a family bathroom.

The property is warmed by gas central heating, with UPVC double glazing also installed.

Contact Wilmslow 01625 536300 £2400.00pcm


EPC D

COUNCIL TAX G

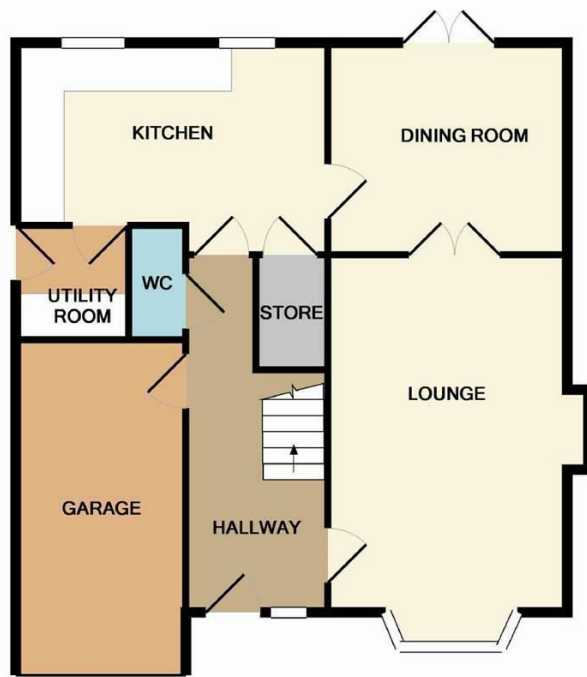


- DETACHED
- POPULAR LOCATION
- FOUR BEDROOMS
- TWO BATHROOMS
- CONSERVATORY
- COUNCIL TAX G

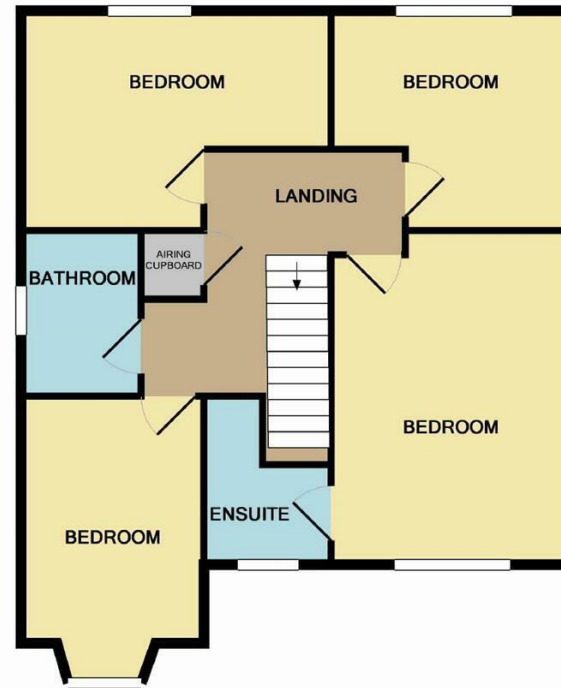


Energy Efficiency Rating		
	Current	Potential
Very energy efficient - lower running costs		
(92 plus) A		
(81-91) B		82
(69-80) C	71	
(55-68) D		
(39-54) E		
(21-38) F		
(1-20) G		
Not energy efficient - higher running costs		
England & Wales	EU Directive 2002/91/EC 	





GROUND FLOOR



1ST FLOOR

Whilst every attempt has been made to ensure the accuracy of the floor plan contained here, measurements of doors, windows, rooms and any other items are approximate and no responsibility is taken for any error, omission, or mis-statement. This plan is for illustrative purposes only and should be used as such by any prospective purchaser. The services, systems and appliances shown have not been tested and no guarantee as to their operability or efficiency can be given
 Made with Metropix ©2012



These particulars are believed to be accurate but they are not guaranteed and do not form a contract. Neither Jordan Fishwick nor the vendor or lessor accept any responsibility in respect of these particulars, which are not intended to be statements or representations of fact and any intending purchaser or lessee must satisfy himself by inspection or otherwise as to the correctness of each of the statements contained in these particulars. Any floorplans on this brochure are for illustrative purposes only and are not necessarily to scale.

Offices at: Chorlton, Didsbury, Disley, Hale, Glossop, Macclesfield, Manchester Deansgate, Manchester Whitworth Street, New Mills, Sale, Wilmslow and Withington

01625 536300

wilmslow@jordanfishwick.co.uk
 www.jordanfishwick.co.uk