



*jordan fishwick*

5 Cavendish Mews, Wilmslow, SK9 1PW  
PCM £1,495 PCM



## Cavendish Mews Cheshire SK9 1PW

£1,495 PCM



### PART FURNISHED AVAILABLE EARLY MAY - VIEWING ESSENTIAL TO APPRECIATE

An extremely attractive two bedroom mid mews property set within a popular location within the heart of Wilmslow.

The property is located within convenient reach of all that central Wilmslow has to offer, making this an extremely desirable location.

The ground floor accommodation comprises in brief: entrance hallway, downstairs W.C., living room and a dining kitchen. The first floor accommodation comprises: stairs/landing, master bedroom with range of fitted wardrobes, second further small double bedroom with fitted wardrobes and a re-fitted contemporary bathroom.


To the front of this beautiful home there are well tended lawned gardens and to the rear there is an enclosed garden with attractive Mandioqueira hardwood decking and gated access to the communal gardens beyond. Garage included

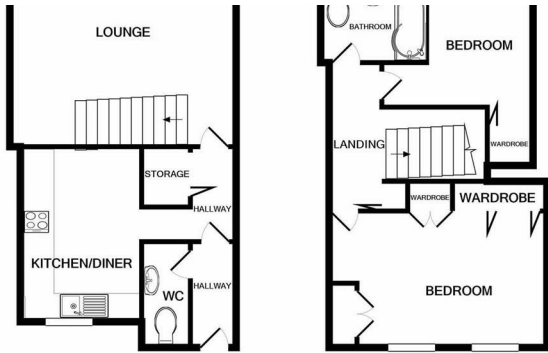
Contact Wilmslow 01625 536300 £1495..00pcm

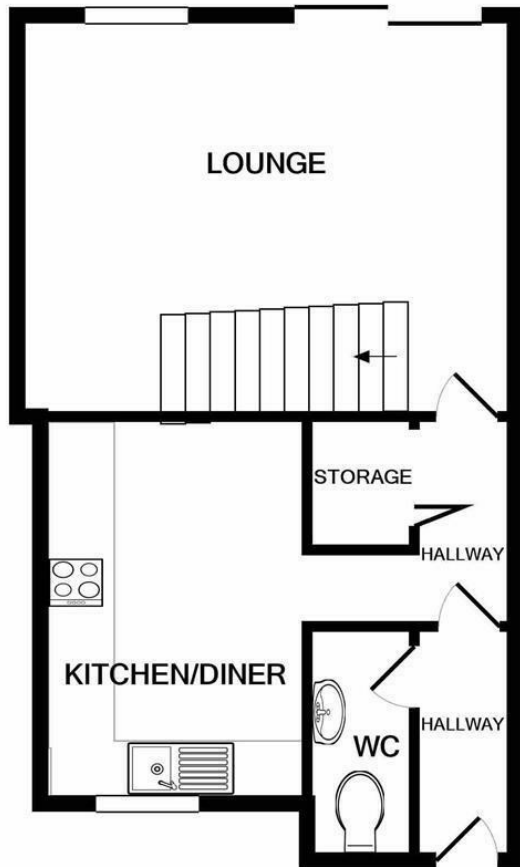


- CENTRAL LOCATION
- TWO BEDROOMS
- GARAGE
- SUNNY ENCLOSED GARDEN
- VIEWING ESSENTIAL
- COUNCIL TAX C

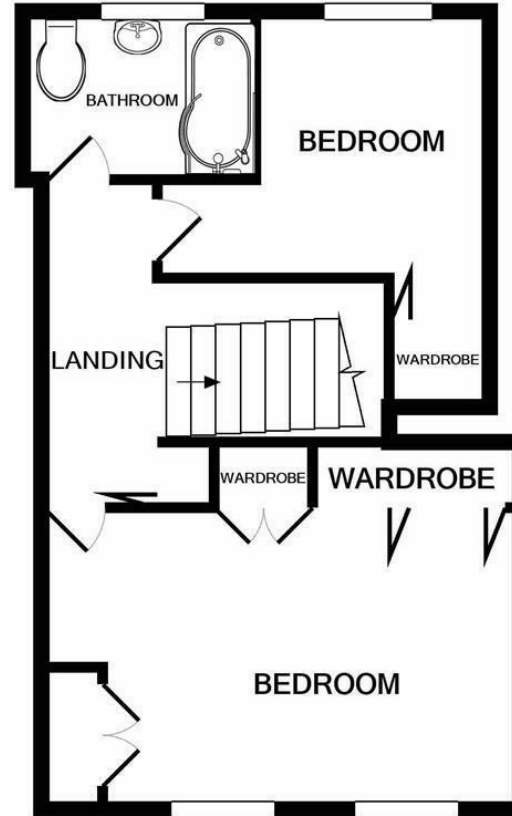


Energy Efficiency Rating		
	Current	Potential
Very energy efficient - lower running costs		
(92 plus) <b>A</b>		<b>89</b>
(81-91) <b>B</b>		
(69-80) <b>C</b>		
(55-68) <b>D</b>	<b>64</b>	
(39-54) <b>E</b>		
(21-38) <b>F</b>		
(1-20) <b>G</b>		
Not energy efficient - higher running costs		
<b>England &amp; Wales</b>		EU Directive 2002/91/EC 





GROUND FLOOR



1ST FLOOR

Measurements are approximate. Not to scale. Illustrative purposes only  
 Made with Metropix ©2022



These particulars are believed to be accurate but they are not guaranteed and do not form a contract. Neither Jordan Fishwick nor the vendor or lessor accept any responsibility in respect of these particulars, which are not intended to be statements or representations of fact and any intending purchaser or lessee must satisfy himself by inspection or otherwise as to the correctness of each of the statements contained in these particulars. Any floorplans on this brochure are for illustrative purposes only and are not necessarily to scale.

Offices at: Chorlton, Didsbury, Disley, Hale, Glossop, Macclesfield, Manchester Deansgate, Manchester Whitworth Street, New Mills, Sale, Wilmslow and Withington

01625 536300

wilmslow@jordanfishwick.co.uk  
 www.jordanfishwick.co.uk