



*jordan fishwick*

**NORTHENDEN**  
Kenworthy Lane



## Kenworthy Lane, Northenden, M22 4FJ

£272,500



### The Property

A lovely, three bedroom, terrace property located on a popular residential road in the heart of Northenden village, with a good sized rear garden, parking to the front and well presented living space throughout. Suitable for a number of buyers including the first time buyer, the accommodation comprises: Entrance hall, spacious lounge with stripped wood flooring and door to kitchen fitted with a comprehensive range of cupboards, rear hall with storage rooms that could be converted to a wc. To the first floor: Three double bedrooms and bathroom with white suite. In addition, there is gas central heating, double glazing throughout. Outside, wrought iron gates open on to a driveway providing off road parking, whilst to the rear is an enclosed lawn. Well positioned for Manchester airport, Manchester city centre, and access to the regional motorway network the property is being offered for sale with no further chain.

### Directions

M22 4FJ



- Three bedroom terrace property
- Northenden village location
- Off road parking
- Excellent location close to amenities & transport links
- Gardens front and rear
- Gas central heating & double glazed
- No chain

Postcode - M22 4FJ

EPC Rating - D

Floor Area - 821.00 sq ft

Local Authority - Manchester City Council

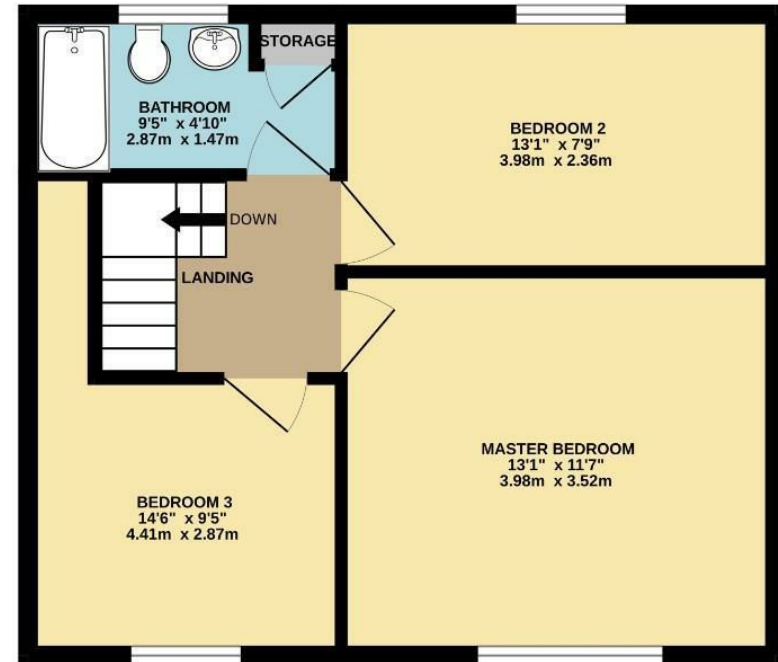
Council Tax - B



GROUND FLOOR  
388 sq.ft. (36.0 sq.m.) approx.



1ST FLOOR  
433 sq.ft. (40.2 sq.m.) approx.



TOTAL FLOOR AREA : 821 sq.ft. (76.3 sq.m.) approx.  
Measurements are approximate. Not to scale. Illustrative purposes only  
Made with Metropix ©2024



These particulars are believed to be accurate but they are not guaranteed and do not form a contract. Neither Jordan Fishwick nor the vendor or lessor accept any responsibility in respect of these particulars, which are not intended to be statements or representations of fact and any intending purchaser or lessee must satisfy himself by inspection or otherwise as to the correctness of each of the statements contained in these particulars. Any floorplans on this brochure are for illustrative purposes only and are not necessarily to scale.

Offices also at: Wilmslow, Macclesfield, Hale, Sale, Chorlton, Glossop, Manchester & Salford

757-759 Wilmslow Road, Didsbury Village, Manchester

0161 445 4480

didsbury@jordanfishwick.co.uk  
www.jordanfishwick.co.uk