



*jordan fishwick*

**WEST DIDSBURY**  
Georgia Avenue



## Georgia Avenue, West Didsbury, M20 1LY

Offers Over £200,000



### The Property

A **STYLISH** apartment forming part of a popular development in **WEST DIDSBURY**, enjoying a **GROUND FLOOR** position. In addition to the high level of presentation, there are numerous features that stand out above the 'normal' modern apartment, including an open plan living/kitchen with defined lounge area and modern dining kitchen with a comprehensive range of fitted units and integrated appliances, a master bedroom with fitted wardrobe, contemporary bathroom with four piece suite and tiled floors and walls, a further double bedroom with ample space for freestanding furniture, generous hallway with useful utility cupboard and an allocated parking space. The development itself is widely sought after for its proximity to the vibrant centre of West Didsbury and Burton Road's array of bars, restaurants and shops, and of course the Metrolink, with stops within close proximity.

### Directions

M20 1LY



- A ground floor apartment set within a popular development
- Stylish purpose built development
- Two double bedrooms
- Open plan lounge & kitchen with integrated appliances
- Large bathroom with 4 piece white suite
- Walking distance to Burton Road & Metro Station
- EWS1 compliant
- Private allocated parking space
- Council Tax Band C / EPC Rating - C

**Postcode** - M20 1LY

**EPC Rating** - C

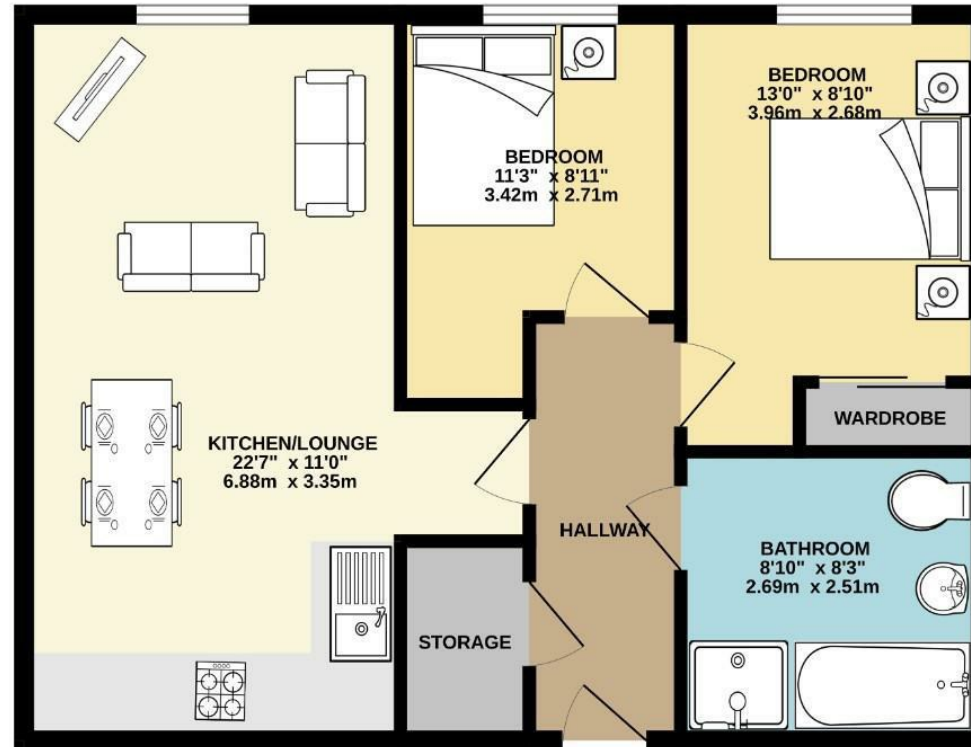
**Floor Area** - 596.00 sq ft

**Local Authority** - Manchester City Council

**Council Tax** - C



GROUND FLOOR  
596 sq.ft. (55.3 sq.m.) approx.



TOTAL FLOOR AREA : 596 sq.ft. (55.3 sq.m.) approx.  
Measurements are approximate. Not to scale. Illustrative purposes only  
Made with Metropix ©2024



These particulars are believed to be accurate but they are not guaranteed and do not form a contract. Neither Jordan Fishwick nor the vendor or lessor accept any responsibility in respect of these particulars, which are not intended to be statements or representations of fact and any intending purchaser or lessee must satisfy himself by inspection or otherwise as to the correctness of each of the statements contained in these particulars. Any floorplans on this brochure are for illustrative purposes only and are not necessarily to scale.

Offices also at: Wilmslow, Macclesfield, Hale, Sale, Chorlton, Glossop, Manchester & Salford

757-759 Wilmslow Road, Didsbury Village, Manchester

0161 445 4480

didsbury@jordanfishwick.co.uk  
www.jordanfishwick.co.uk