



jordan fishwick

7 Greenhall Mews, Wilmslow, SK9 1LP
PCM £1,200 PCM



Greenhall Mews SK9 1LP

£1,200 PCM



PART FURNISHED AVAILABLE END MARCH - VIEWING RECOMMENDED.

Located in the heart of Wilmslow town centre is this spacious second floor apartment benefiting from off road parking and garage with excellent access to the train station and all local amenities.

Entrance hall with storage, large light and airy lounge, modern fitted kitchen with gas hob and electric oven, washing machine, dishwasher and fridge freezer, two double bedrooms with storage, bathroom with shower over bath and storage. Garage. Gas central heating. Off road parking

Contact Wilmslow 01625 536300 £1200.00pcm

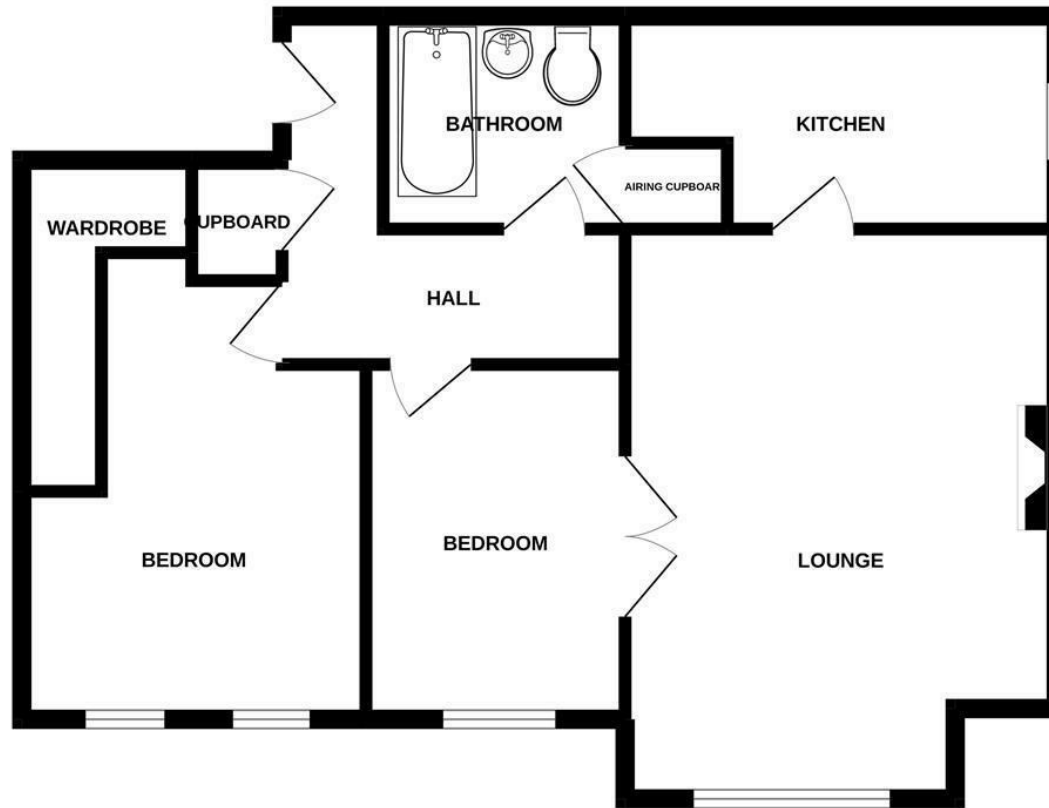


- CENTRAL LOCATION
- SECOND FLOOR
- TWO DOUBLE BEDROOMS
- GARAGE
- OFF ROAD PARKING
- COUNCIL TAX D



Energy Efficiency Rating		
	Current	Potential
Very energy efficient - lower running costs		
(92 plus) A		
(81-91) B		82
(69-80) C	70	
(55-68) D		
(39-54) E		
(21-38) F		
(1-20) G		
Not energy efficient - higher running costs		
England & Wales	EU Directive 2002/91/EC	

GROUND FLOOR



Measurements are approximate. Not to scale. Illustrative purposes only.
Made with Metropix ©2022



These particulars are believed to be accurate but they are not guaranteed and do not form a contract. Neither Jordan Fishwick nor the vendor or lessor accept any responsibility in respect of these particulars, which are not intended to be statements or representations of fact and any intending purchaser or lessee must satisfy himself by inspection or otherwise as to the correctness of each of the statements contained in these particulars. Any floorplans on this brochure are for illustrative purposes only and are not necessarily to scale.

Offices at: Chorlton, Didsbury, Disley, Hale, Glossop, Macclesfield, Manchester Deansgate, Manchester Whitworth Street, New Mills, Sale, Wilmslow and Withington

01625 536300

wilmslow@jordanfishwick.co.uk
www.jordanfishwick.co.uk