



jordan fishwick

Low Leighton Road New Mills High Peak



Low Leighton Road New Mills High Peak SK22 4JF

Reduced To £284,000



The Property

Backing onto farmland with the most impressive views over open fields, a stunning three bedroom semi-detached family home. Sat behind a walled frontage and conveniently positioned for New Mills amenities. Comprising: entrance hall, living room, open plan 18ft dining kitchen, rear porch, three first floor bedrooms and a bathroom with separate shower. Landscaped, low maintenance garden with outbuilding, pvc double glazing and gas central heating. Much improved in recent years and ready to walk into, this delightful home needs to be seen.




- Amazing Views
- Period Semi-Detached
- Three Bedrooms
- Landscaped Low Maintenance Gardens
- Open Plan Re-fitted Dining Kitchen
- Energy Rating: C Council Tax: C
- Bathroom with Separate Shower
- Immaculate Throughout
- Popular Location

Postcode SK22 4JF

EPC Rating C

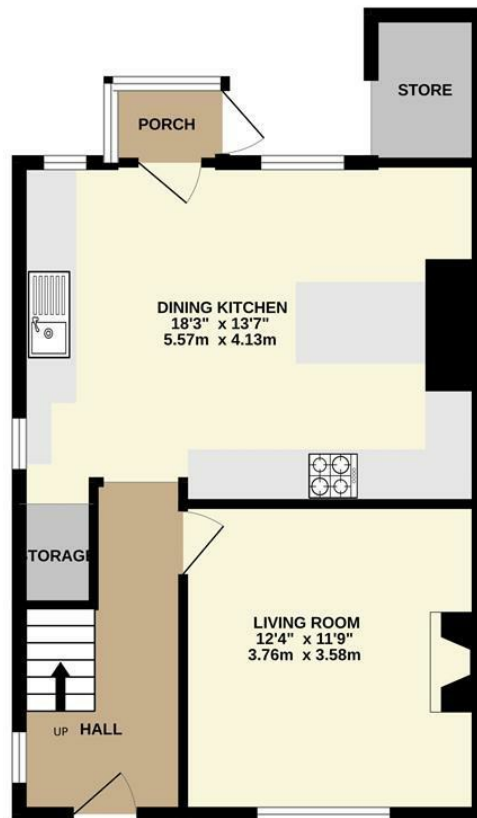
Local Authority High Peak

Council Tax C

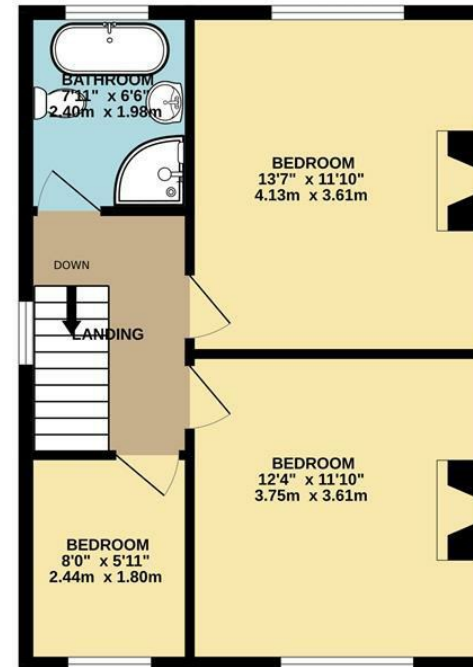
Energy Efficiency Rating		
	Current	Potential
Very energy efficient - lower running costs		
(92 plus) A		
(81-91) B		83
(69-80) C	71	
(55-68) D		
(39-54) E		
(21-38) F		
(1-20) G		
Not energy efficient - higher running costs		
England & Wales	EU Directive 2002/91/EC 	



GROUND FLOOR



1ST FLOOR



Whilst every attempt has been made to ensure the accuracy of the floorplan contained here, measurements of doors, windows, rooms and any other items are approximate and no responsibility is taken for any error, omission or mis-statement. This plan is for illustrative purposes only and should be used as such by any prospective purchaser. The services, systems and appliances shown have not been tested and no guarantee as to their operability or efficiency can be given.
Made with Metropix ©2024



These particulars are believed to be accurate but they are not guaranteed and do not form a contract. Neither Jordan Fishwick nor the vendor or lessor accept any responsibility in respect of these particulars, which are not intended to be statements or representations of fact and any intending purchaser or lessee must satisfy himself by inspection or otherwise as to the correctness of each of the statements contained in these particulars. Any floorplans on this brochure are for illustrative purposes only and are not necessarily to scale.

Offices at: Chorlton, Didsbury, Disley, Hale, Glossop, Macclesfield, Manchester Deansgate, Manchester Whitworth Street, New Mills, Sale, Wilmslow and Withington

2 Union Road, New Mills, High Peak, Derbyshire, SK22 3ES

01663 767878

newmills@jordanfishwick.co.uk

www.jordanfishwick.co.uk