



BEE CITY LIVING BEE CITY LIVING BEE CITY LIVING

Landscape



Apt 19 City Point 1, 150 Chapel Street, Salford, M3 6AF

EWS1 IN PLACE! Mortgage buyers invited.

A spacious duplex apartment in City Point only five minutes walk from the buzzing Deansgate. This first floor apartment benefits from over 900 sq ft of living space with a full length balcony and a secure allocated undercroft parking space. Accommodation comprises on the lower floor of two double bedrooms, the master with an en suite shower room and a further bathroom off the hallway. Upstairs there is a extensive open plan living/kitchen area with a balcony off. NO ONGOING CHAIN.

Price £220,000

Viewing arrangements

Viewing strictly by appointment through the agent
245 Deansgate, Manchester, M3 4EN 0161 833 9499 opt 3

Entrance Hallway

Bedroom One

16'4" x 14'6" Max

Ensuite

6'4" x 4'5"

Bathroom Two

9'8" x 10'6"

Bathroom

5'10" x 5'6"

Living Area

27'0" 16'4" overall

Kitchen

External

Allocated parking space and balcony off the living room.

Additional Information

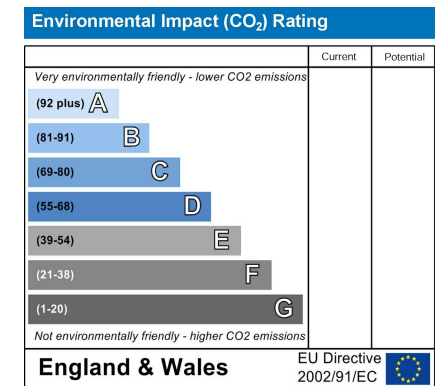
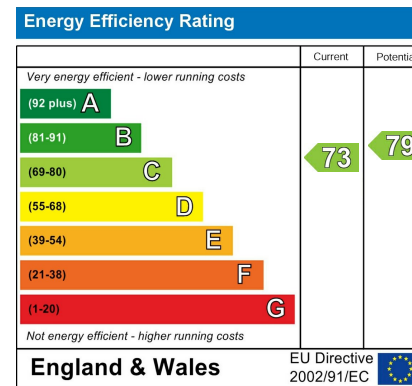
Lease 150 years from 2001

Ground Rent£100 pa

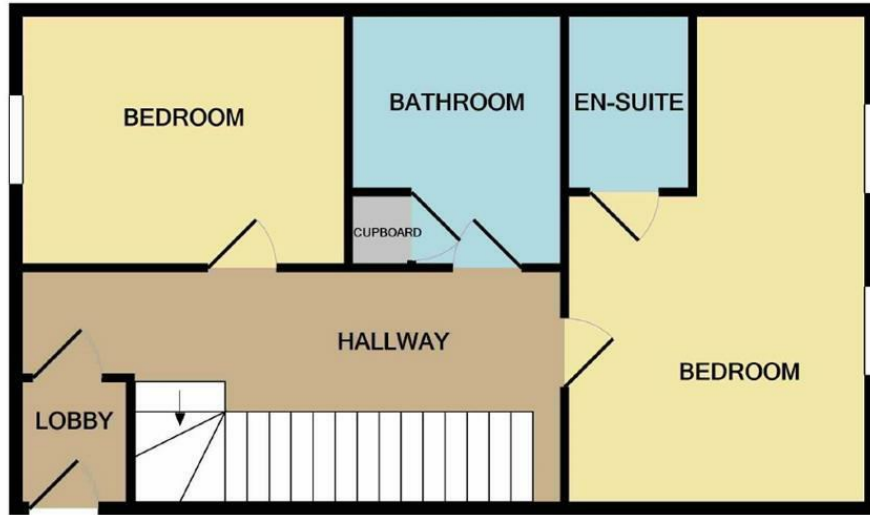
Service Charge £2600 per annum

Council Tax Band C

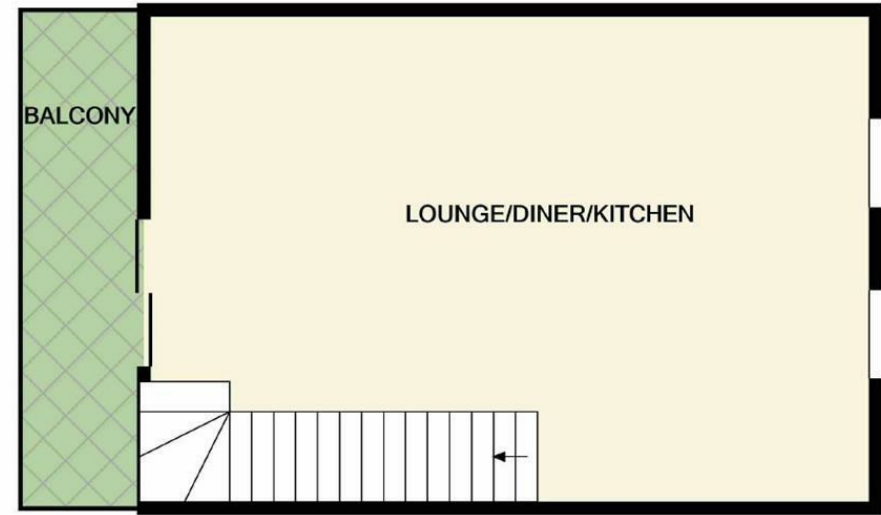
Management company - Stevenson Whyte







GROUND FLOOR



1ST FLOOR

Measurements are approximate. Not to scale. Illustrative purposes only
Made with Metropix ©2021



These particulars are believed to be accurate but they are not guaranteed and do not form a contract. Neither Jordan Fishwick nor the vendor or lessor accept any responsibility in respect of these particulars, which are not intended to be statements or representations of fact and any intending purchaser or lessee must satisfy himself by inspection or otherwise as to the correctness of each of the statements contained in these particulars. Any floorplans on this brochure are for illustrative purposes only and are not necessarily to scale.

Offices at: Chorlton, Didsbury, Disley, Hale, Glossop, Macclesfield, Manchester Deansgate, Manchester Whitworth Street, New Mills, Sale, Wilmslow and Withington

245 Deansgate, Manchester, M3 4EN

0161 833 9499 opt 3

manchester@jordanfishwick.co.uk

www.jordanfishwick.co.uk

