



jordan fishwick

5 Gatcombe Mews, Wilmslow, SK9 5QW
PCM £1,500 PCM



Gatcombe Mews Cheshire SK9 5QW

£1,500 PCM



AVAILABLE NOW FURNISHED - VIEWING RECOMMENDED

A stylish three storey terraced Cheshire brick mews style property on the ever popular Boleyn Park development right in the centre of Wilmslow within yards of its popular pavement cafes, restaurants, wine bars etc.

Set in a block paved no through road amongst homes of a similar style and quality.

Ideal choice for professional couples or families.

Comprises: ground floor: entrance hall, utility, bedroom with en suite shower room/wc, first floor: hall open to dining area, fitted luxury kitchen, 2 bedrooms, bathroom/wc, second floor: large lounge with vaulted ceiling. Gas heating. Garage. Enclosed rear garden.

Contact Wilmslow office 01625 536300. £1500.00pcm

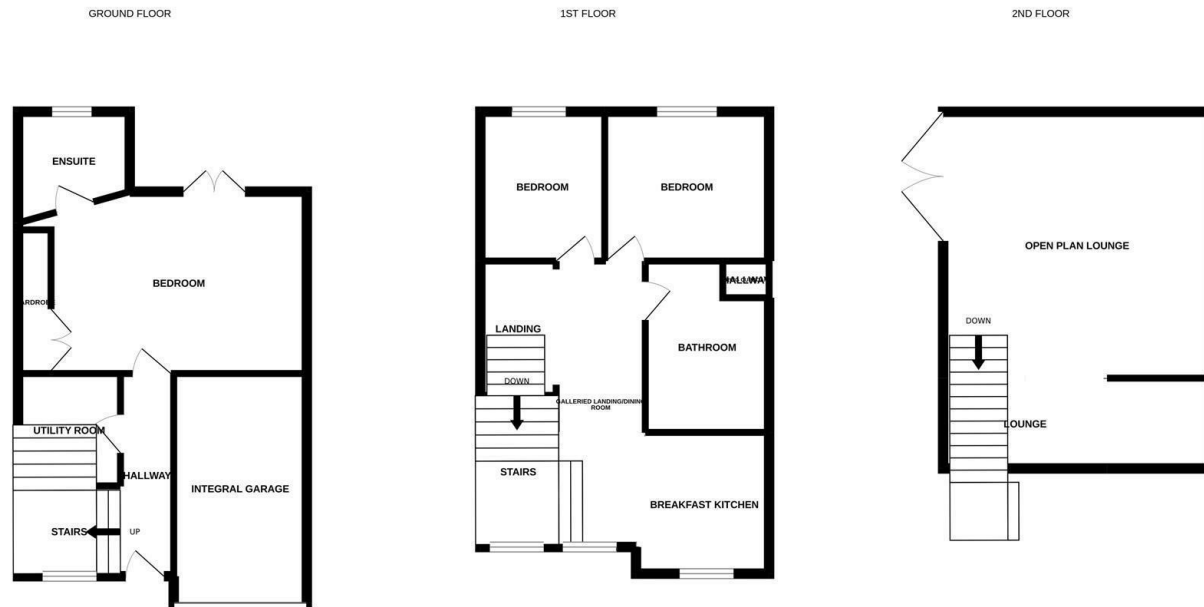


- THREE BEDROOMS
- CENTRAL LOCATION
- GARAGE
- TOWNHOUSE
- SPACIOUS LIVING AREA
- COUNCIL TAX C



Energy Efficiency Rating		
	Current	Potential
Very energy efficient - lower running costs		
(92 plus) A		
(81-91) B		84
(69-80) C		
(55-68) D	54	
(39-54) E		
(21-38) F		
(1-20) G		
Not energy efficient - higher running costs		
England & Wales	EU Directive 2002/91/EC	





Measurements are approximate. Not to scale. Illustrative purposes only.
 Made with Metropix ©2022.



These particulars are believed to be accurate but they are not guaranteed and do not form a contract. Neither Jordan Fishwick nor the vendor or lessor accept any responsibility in respect of these particulars, which are not intended to be statements or representations of fact and any intending purchaser or lessee must satisfy himself by inspection or otherwise as to the correctness of each of the statements contained in these particulars. Any floorplans on this brochure are for illustrative purposes only and are not necessarily to scale.

Offices at: Chorlton, Didsbury, Disley, Hale, Glossop, Macclesfield, Manchester Deansgate, Manchester Whitworth Street, New Mills, Sale, Wilmslow and Withington

01625 536300

wilmslow@jordanfishwick.co.uk
 www.jordanfishwick.co.uk