



jordan fishwick

Buxton Road Disley Stockport



Buxton Road Disley Stockport SK12 2DZ

£235,000



The Property

Occupying an ideal position for Disley Village and its amenities, a spacious and extremely well presented THREE DOUBLE BEDROOM mid terraced home. Refurbished in recent years with enclosed private gardens offering views beyond, pvc double glazing and gas central heating. Comprising: living room, large dining kitchen, useful cellar, three first floor bedrooms and bathroom with white suite. Great first time buyer home or for the buy to let investor. Viewing recommended.



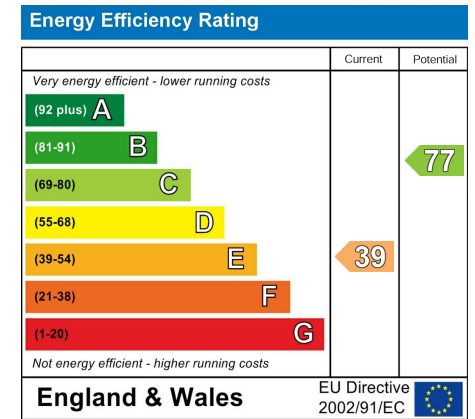
- Convenient Position For Disley Village
- Fine Rear Views
- Spacious Deceptive Accommodation
- Three Double Bedrooms
- Refurbished In Recent Years
- Well Presented Throughout
- Useful Cellar
- Enclosed Garden
- Pvc double glazing and Gas central heating

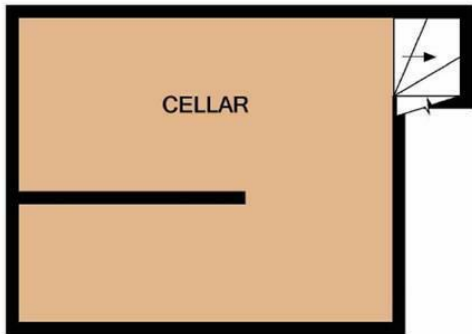
Postcode SK12 2DZ

EPC Rating E

Local Authority Cheshire East

Council Tax B

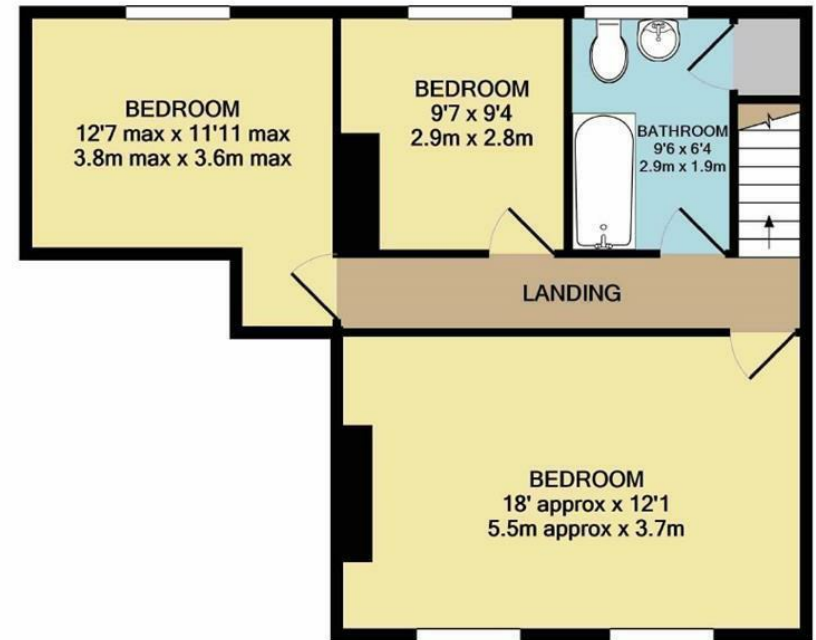




BASEMENT LEVEL



GROUND FLOOR



1ST FLOOR

Whilst every attempt has been made to ensure the accuracy of the floor plan contained here, measurements of doors, windows, rooms and any other items are approximate and no responsibility is taken for any error, omission, or mis-statement. This plan is for illustrative purposes only and should be used as such by any prospective purchaser. The services, systems and appliances shown have not been tested and no guarantee as to their operability or efficiency can be given
 Made with Metropix ©2020



These particulars are believed to be accurate but they are not guaranteed and do not form a contract. Neither Jordan Fishwick nor the vendor or lessor accept any responsibility in respect of these particulars, which are not intended to be statements or representations of fact and any intending purchaser or lessee must satisfy himself by inspection or otherwise as to the correctness of each of the statements contained in these particulars. Any floorplans on this brochure are for illustrative purposes only and are not necessarily to scale.

Offices at: Chorlton, Didsbury, Disley, Hale, Glossop, Macclesfield, Manchester Deansgate, Manchester Whitworth Street, New Mills, Sale, Wilmslow and Withington

14 Market Street, Disley, Cheshire, SK12 2AA

01663 76 78 78

disley@jordanfishwick.co.uk

www.jordanfishwick.co.uk