



28 Beechfield Close, Sale, M33 4EH

Offers Over £165,000

www.jordanfishwick.co.uk





Jordan Fishwick

- NEW MODERN ELECTRIC HEATERS installed 2024
- Ample Storage Throughout
- 126 Year Lease from 1988
- Service Charge £650 PA
- EPC Rating D
- Two Bedroom Ground Floor Apartment
- Residents Parking
- Ground Rent £10 PA
- Council Tax Band A

Two Bedroom Ground Floor apartment situated on a quiet cul-de-sac off Washway Road less than a mile from Brooklands Metrolink. Ideal property for first time buyers, downsizers or buy to let investors! The property briefly comprises, entrance hall, lounge/diner opening to the kitchen, two good sized bedrooms, shower room and four internal storage cupboards. NEW MODERN ELECTRIC HEATERS.

126 Year Lease from 1988. Ground Rent is £10 PA. Service Charge Awaited. Council Tax Band A. Call to view!

Offers Over £165,000



Lease Details

Entrance Hall

Kitchen

9'2" x 9'0" (2.8 x 2.75)

Lounge

16'4" x 9'8" (5 x 2.95)

Master Bedroom

12'9" x 9'0" (3.9 x 2.75)

Bedroom Two

12'9" x 5'7" (3.9 x 1.72)

Shower Room

6'2" x 5'8" (1.9 x 1.74)





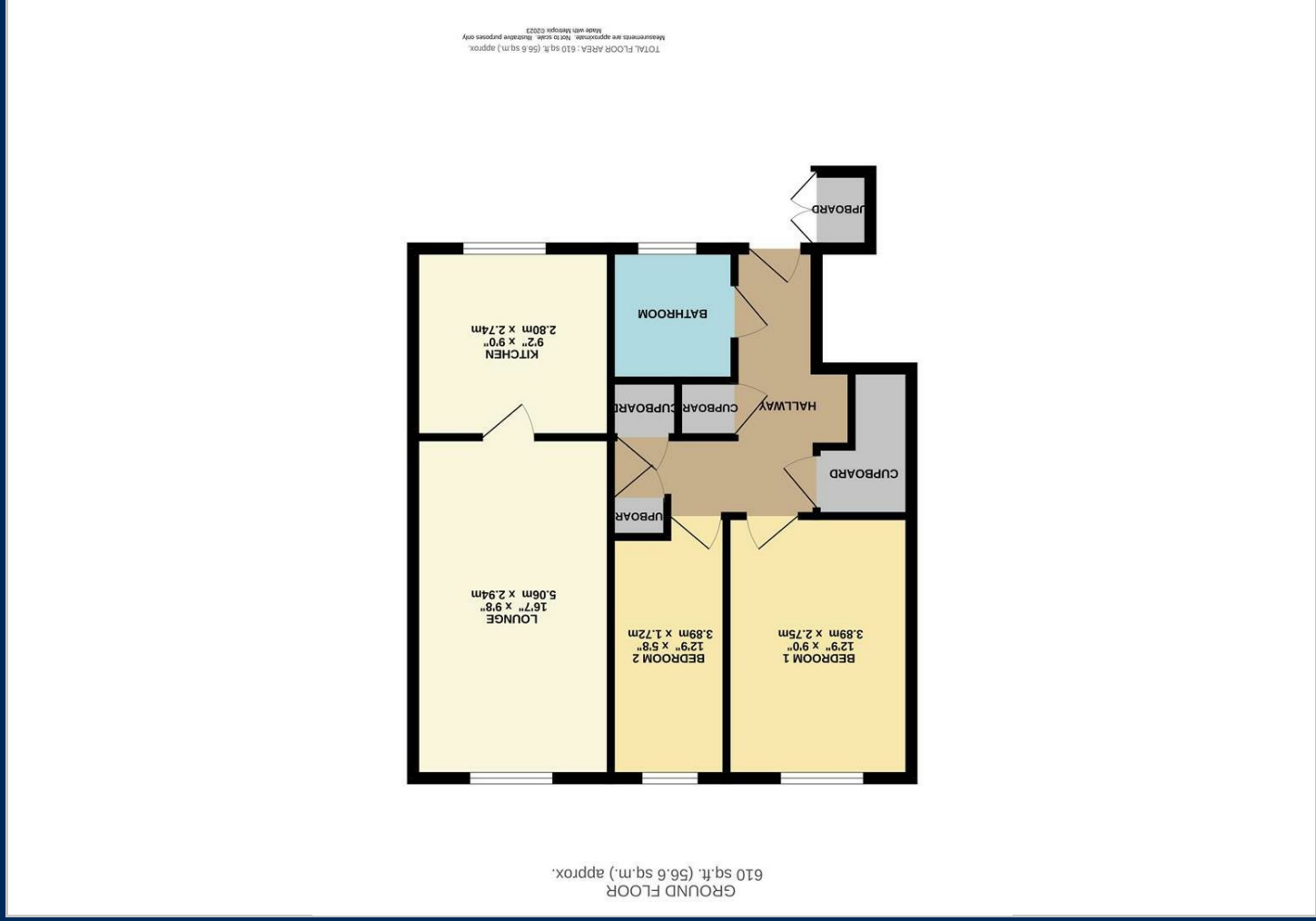
01619622828

Jordan fishwick

Why take a risk?
Sell Smarter



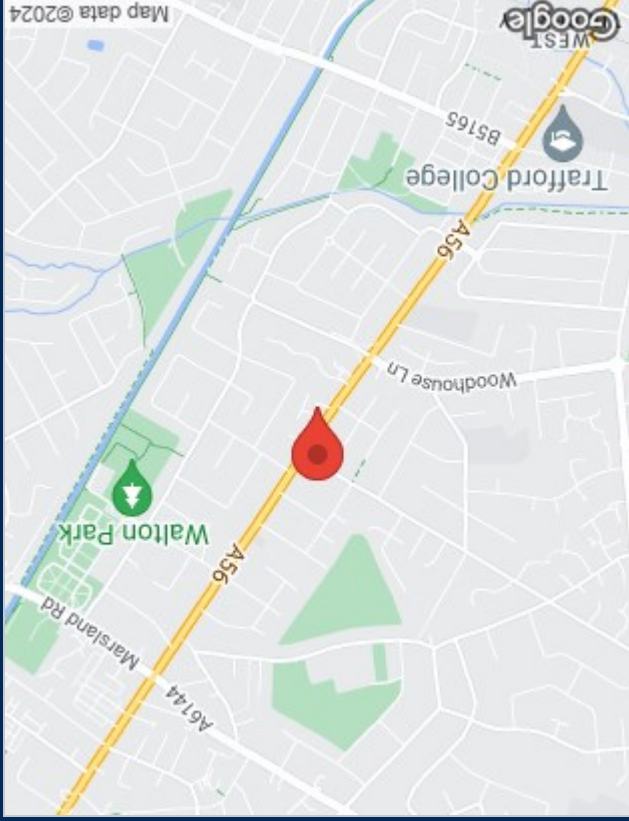




Viewing

Please contact our Sale Office on 0161 962 2828 if you wish to arrange a viewing appointment for this property or require further information.

The particulars are set out as a general outline only for the guidance of intended purchasers or lessees, and do not constitute, any part of a contract. Nothing in these particulars shall be deemed to be a statement that the property is in good structural condition or otherwise nor that any of the services, appliances, equipment or facilities are in good working order. Purchasers should satisfy themselves of this prior to purchasing.



Energy Performance Graph

