



Jordan fishwick

WEST DIDSBURY
Langham Court



Langham Court, West Didsbury, M20 2PX

Guide Price £165,000

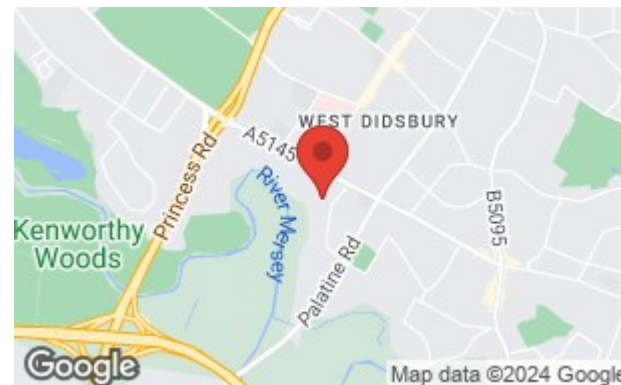


The Property

A GENEROUS, ground floor, double bedroomed apartment with an OUTSIDE TERRACE, SINGLE GARAGE and an ideal location within a DESIRABLE and secluded development in fashionable WEST DIDSBURY. 508 sq ft. In outline:- Communal entrance hall, private entrance hall with cloaks cupboard, ample storage and separate WC, lounge with patio doors and sun terrace off, modern fitted kitchen, double bedroom with space for freestanding furniture and a bathroom with white suite and separate W/C. The development lies within mature and well tended gardens and grounds with residents parking and SINGLE GARAGE INCLUDED. *NO CHAIN*

Directions

M20 2PX



- A double bedroomed apartment
- Prime West Didsbury location
- Large sun terrace
- Single GARAGE included
- Well tended communal gardens & grounds
- Residents parking
- Generous living room
- Ground floor position
- NO ONWARD CHAIN

Postcode - M20 2PX

EPC Rating - D

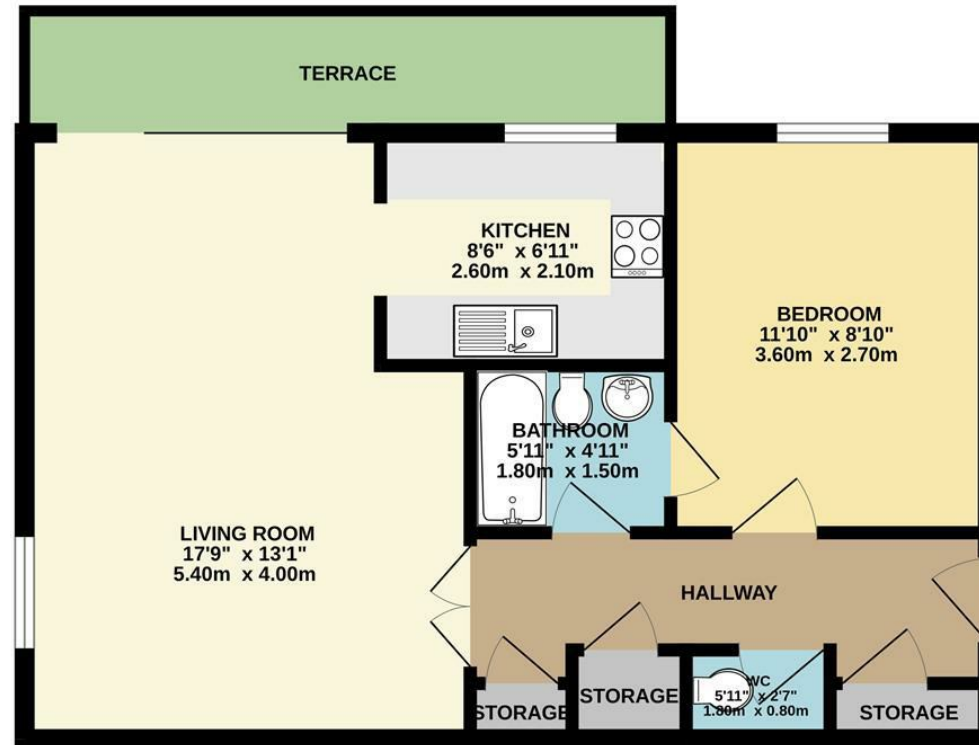
Floor Area - 508.00 sq ft

Local Authority - Manchester

Council Tax - B



GROUND FLOOR
508 sq.ft. (47.2 sq.m.) approx.



TOTAL FLOOR AREA : 508 sq.ft. (47.2 sq.m.) approx.
Measurements are approximate. Not to scale. Illustrative purposes only
Made with Metropia ©2024



These particulars are believed to be accurate but they are not guaranteed and do not form a contract. Neither Jordan Fishwick nor the vendor or lessor accept any responsibility in respect of these particulars, which are not intended to be statements or representations of fact and any intending purchaser or lessee must satisfy himself by inspection or otherwise as to the correctness of each of the statements contained in these particulars. Any floorplans on this brochure are for illustrative purposes only and are not necessarily to scale.

Offices also at: Wilmslow, Macclesfield, Hale, Sale, Chorlton, Glossop, Manchester & Salford

757-759 Wilmslow Road, Didsbury Village, Manchester

0161 445 4480

didsbury@jordanfishwick.co.uk
www.jordanfishwick.co.uk