



*jordan fishwick*

**DIDSBURY**  
Shapley Court





## Shapley Court, Didsbury, M20 6QX

Guide Price £260,000

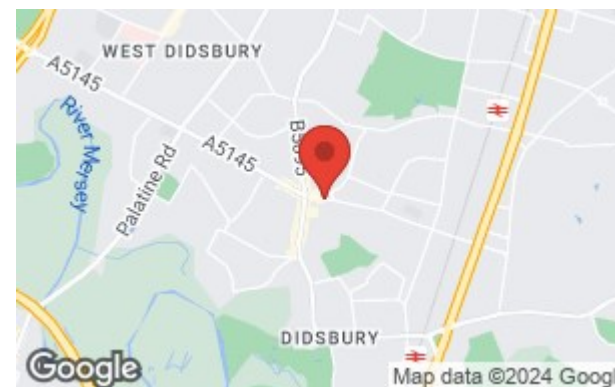


### The Property

A well presented two DOUBLE BEDROOM, two bathroom, second floor apartment in the heart of Didsbury Village, extending over 700 sq ft. In brief the property comprises; Entrance hall with storage cupboard, open plan living/dining/kitchen area with built-in appliances and patio doors leading to a private balcony. Two double bedrooms with the master benefitting from en-suite and a further main bathroom with fitted white suite. The property also benefits from gas central heating, double glazing, lift access to all floors, off road parking, allocation for one car plus visitor spaces available and communal bike lockup in secure underground car park. Shapley Court enjoys a central location close to the Metrolink and Didsbury Village. NO CHAIN

### Directions

M20 6QX





- Second floor apartment
- Two double bedrooms
- Two bathrooms
- Open plan living area
- Private balcony
- Lift access to all floors
- Undercroft parking
- Well tended communal areas
- Central location
- NO ONWARD CHAIN

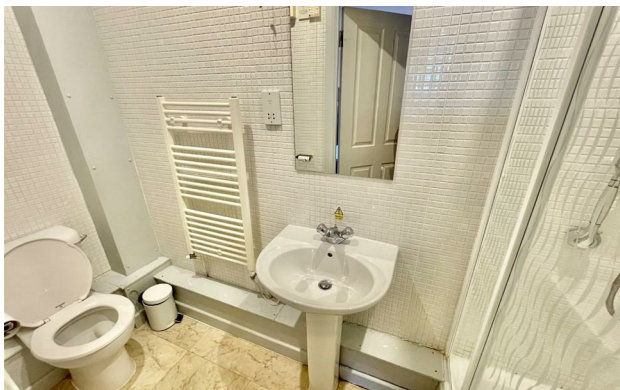
Postcode - M20 6QX

EPC Rating - C

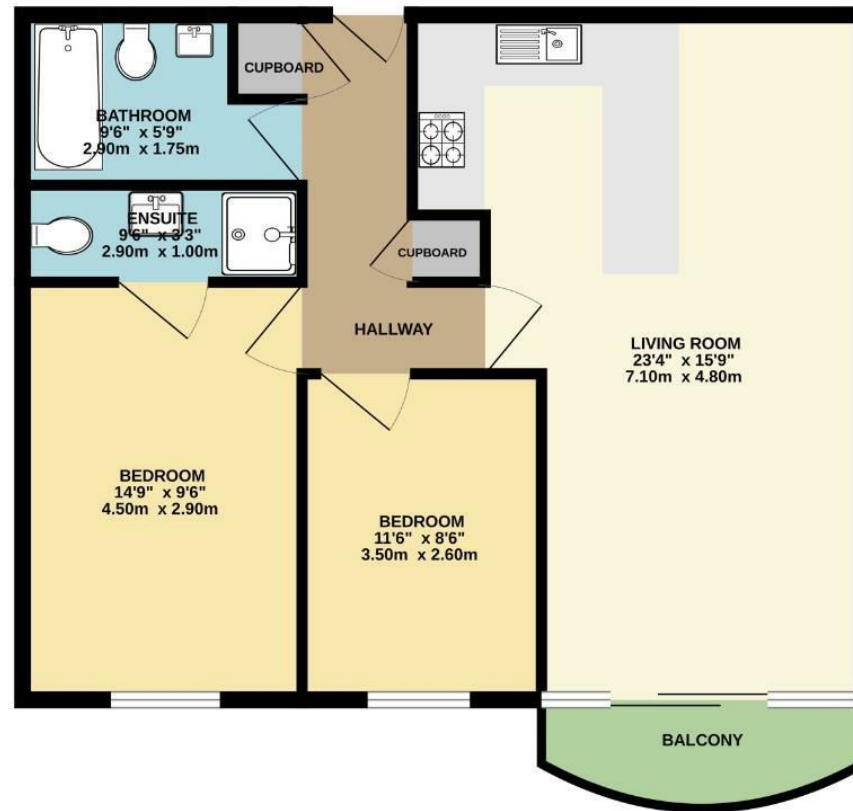
Floor Area - 709.00 sq ft

Local Authority - Manchester City Council

Council Tax - C



SECOND FLOOR  
709 sq.ft. (65.9 sq.m.) approx.



TOTAL FLOOR AREA: 709 sq.ft. (65.9 sq.m.) approx.  
Measurements are approximate. Not to scale. Illustrative purposes only.  
Made with Metropix ©2024



These particulars are believed to be accurate but they are not guaranteed and do not form a contract. Neither Jordan Fishwick nor the vendor or lessor accept any responsibility in respect of these particulars, which are not intended to be statements or representations of fact and any intending purchaser or lessee must satisfy himself by inspection or otherwise as to the correctness of each of the statements contained in these particulars. Any floorplans on this brochure are for illustrative purposes only and are not necessarily to scale.

Offices also at: Wilmslow, Macclesfield, Hale, Sale, Chorlton, Glossop, Manchester & Salford

757-759 Wilmslow Road, Didsbury Village, Manchester

0161 445 4480

didsbury@jordanfishwick.co.uk  
www.jordanfishwick.co.uk