



jordan fishwick

8 Greenhall Mews, Wilmslow, SK9 1LP
PCM £1,100 PCM

Greenhall Mews Cheshire SK9 1LP

£1,100 PCM



AVAILABLE MID MARCH PART FURNISHED

Having been completely refurbished to an excellent standard this well proportioned top floor apartment is situated within central Wilmslow and just a short stroll from Wilmslow station.

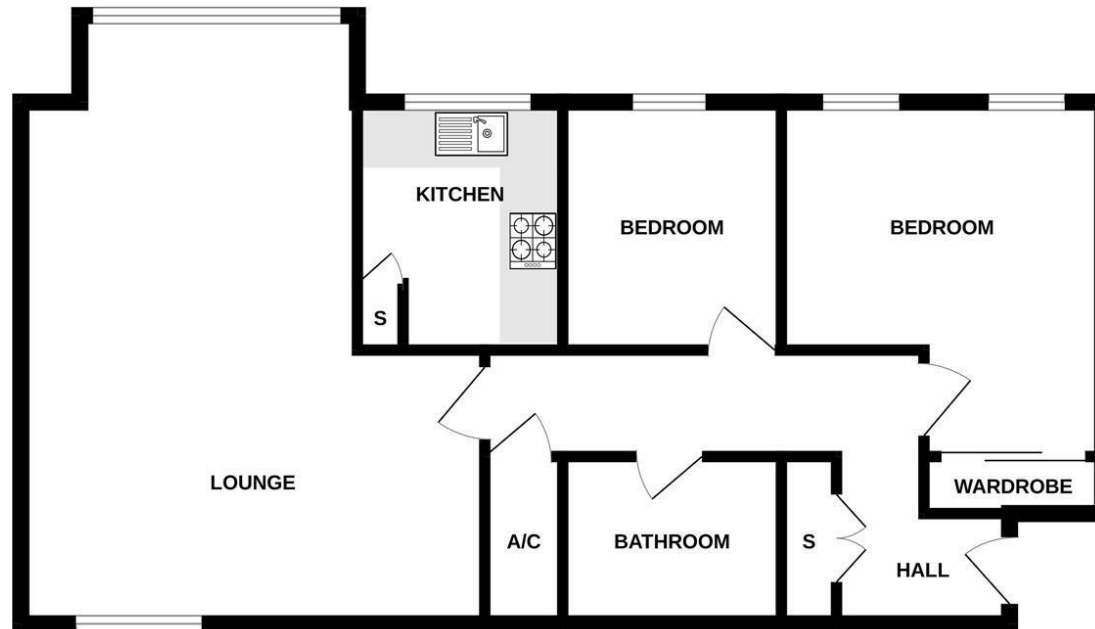
Internally the accommodation comprises in brief: Communal entrance hallway with security intercom point, private entrance hallway, well proportioned living room/dining room, modern fitted kitchen with appliances, two bedrooms and a modern bathroom with shower over bath. The development is surrounded by well tended lawned gardens and off road parking is also provided by the single garage. Further visitor parking spaces are also provided. Internal viewings are highly recommended. Contact Wilmslow 01625 536300 £1100.00pcm

- TWO DOUBLE BEDROOMS
- TOP FLOOR APARTMENT
- MODERN KITCHEN AND BATHROOM
- GARAGE
- COMMUNAL GARDENS
- TOWN CENTRE LOCATION



Energy Efficiency Rating		
	Current	Potential
Very energy efficient - lower running costs		
(92 plus) A		
(81-91) B		
(69-80) C		74
(55-68) D	58	
(39-54) E		
(21-38) F		
(1-20) G		
Not energy efficient - higher running costs		
England & Wales	EU Directive 2002/91/EC	

GROUND FLOOR



Measurements are approximate. Not to scale. Illustrative purposes only.
Made with Metropix ©2024



These particulars are believed to be accurate but they are not guaranteed and do not form a contract. Neither Jordan Fishwick nor the vendor or lessor accept any responsibility in respect of these particulars, which are not intended to be statements or representations of fact and any intending purchaser or lessee must satisfy himself by inspection or otherwise as to the correctness of each of the statements contained in these particulars. Any floorplans on this brochure are for illustrative purposes only and are not necessarily to scale.

Offices at: Chorlton, Didsbury, Disley, Hale, Glossop, Macclesfield, Manchester Deansgate, Manchester Whitworth Street, New Mills, Sale, Wilmslow and Withington

01625 536300

wilmslow@jordanfishwick.co.uk
www.jordanfishwick.co.uk