



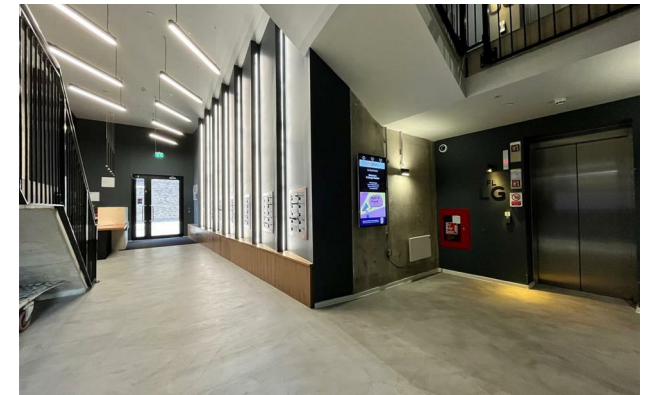
jordan fishwick

Apt 206 1F Spinners Way, Castlefield, M15
£1,350 Per Calendar Month



**1F Spinners Way Manchester
M15 4UZ**

£1,350 Per Calendar Month



The Property

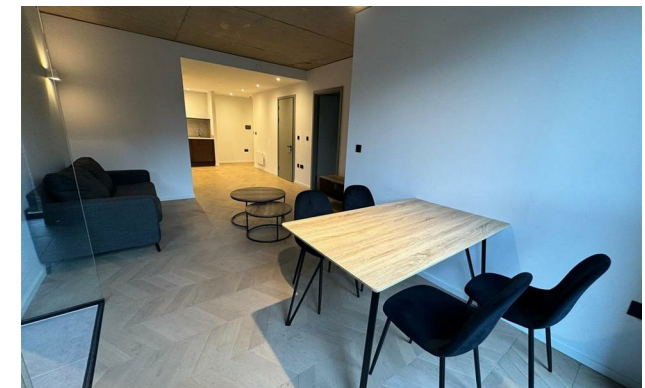
Available Now. Jordan Fishwick presents this LUXURIOUS 2nd floor apartment in this residential development in Manchester. A Modern apartment in the heart of the city's newest neighbourhood. Features include: RESIDENTS ROOFTOP BAR, outdoor yoga space and PRIVATE WINTER GARDEN. The property comprises of two double bedrooms & two bathrooms with a large open kitchen/ living room. As well as an enclosed terrace area off the dining area.

St George's Gardens interiors come with Walnut accented wall panelling, kitchens and bathroom cabinetry. Smooth, classic herringbone flooring with tonal blending compliments the luxurious bedroom carpets and bathroom tiles. Features lighting and smart controlled heating add an extra touch of luxury.

On the 11th floor, there is a rooftop garden which features a private residents bar, yoga space and social breakout areas with magnificent views of Manchester's ever expanding city centre skyline.


No Parking included/ Tax Band E. EPC Rating B.

VIDEO/ PHOTOS OFFERS ARE NOT ACCEPTED - PLEASE BOOK AN IN PERSON VIEWING



- LET AGREED
- Two Double bedrooms
- On site concierge
- Communal Rooftop Area
- Close to City Centre
- EPC Rating B
- Tax Band E
- No Pets Allowed
- No Parking



Energy Efficiency Rating		
	Current	Potential
Very energy efficient - lower running costs		
(92 plus) A		
(81-91) B	85	85
(69-80) C		
(55-68) D		
(39-54) E		
(21-38) F		
(1-20) G		
Not energy efficient - higher running costs		
England & Wales	EU Directive 2002/91/EC 	



GROUND FLOOR



Measurements are approximate. Not to scale. Illustrative purposes only.
Made with Metropix ©2024