



3 Boundary Green, Denton, Manchester, M34 3BY

Jordan Fishwick are pleased to offer for sale this charming 3 Bedroom Mid-terraced cottage style property located in the heart of Denton overlooking the manicured lawns of the picturesque cricket green. The property briefly comprises of entrance hall, open plan living room/dining area, separate kitchen with integrated appliances, two double bedrooms, one single and a well appointed bathroom. There are French doors off the dining room leading to an ample sized rear garden. The property also benefits from a garage with additional parking space in front.

A number of amenities are on your door step with shops, cafe's and the famous Crown Point North Shopping Centre just a 5 minute walk away. The property also benefits from fantastic transport links via bus or train providing seamless access to Manchester City Centre and neighbouring Ashton-Under-Lyne.

This property is offered with vacant possession and no chain involved.

Asking Price £205,000

Viewing arrangements

Viewing strictly by appointment through the agent
245 Deansgate, Manchester, M3 4EN 0161 833 9499 opt 3

Living Room

11'1" x 16'0"

Spacious carpeted Living area overlooking the manicured cricket green.

Dining Room

7'6" x 8'2"

Comfortable dining room overlooking the spacious rear garden.

Kitchen

8'2" x 7'6"

Kitchen with integrated appliances.

Bedroom One

9'6" x 10'9"

Master Bedroom overlooking the front of the property and the cricket green.

Bedroom Two

8'10" x 8'6"

Second Bedroom overlooking the rear of the property.

Bedroom Three

7'2" x 5'2"

Third Bedroom also overlooking the rear of the property, ideal for an office.

Bathroom

6'6" x 7'2"

Three Piece Fitted Bathroom suite.

Externally


Garage away from the property with parking space in front of it.


Gardens front & rear.

Additional Information

Ground Rent - £50 A Year

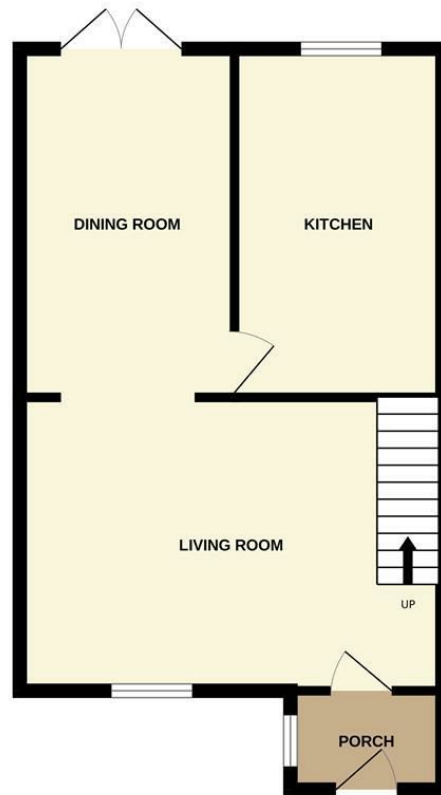
Lease - 999 years from 1 January 1988

Energy Efficiency Rating		
	Current	Potential
<i>Very energy efficient - lower running costs</i>		
(92 plus) A		
(81-91) B		
(69-80) C		
(55-68) D		
(39-54) E		
(21-38) F		
(1-20) G		
<i>Not energy efficient - higher running costs</i>		
England & Wales	EU Directive 2002/91/EC	

Environmental Impact (CO ₂) Rating		
	Current	Potential
<i>Very environmentally friendly - lower CO₂ emissions</i>		
(92 plus) A		
(81-91) B		
(69-80) C		
(55-68) D		
(39-54) E		
(21-38) F		
(1-20) G		
<i>Not environmentally friendly - higher CO₂ emissions</i>		
England & Wales	EU Directive 2002/91/EC	



GROUND FLOOR



1ST FLOOR



Measurements are approximate. Not to scale. Illustrative purposes only.
Made with Metropix ©2023



These particulars are believed to be accurate but they are not guaranteed and do not form a contract. Neither Jordan Fishwick nor the vendor or lessor accept any responsibility in respect of these particulars, which are not intended to be statements or representations of fact and any intending purchaser or lessee must satisfy himself by inspection or otherwise as to the correctness of each of the statements contained in these particulars. Any floorplans on this brochure are for illustrative purposes only and are not necessarily to scale.

Offices at: Chorlton, Didsbury, Disley, Hale, Glossop, Macclesfield, Manchester Deansgate, Manchester Whitworth Street, New Mills, Sale, Wilmslow and Withington

245 Deansgate, Manchester, M3 4EN

0161 833 9499 opt 3

manchester@jordanfishwick.co.uk

www.jordanfishwick.co.uk

