



jordan fishwick

Apt 8 Hawthorne House, Chapel Lane, SK9
PCM £1,200 PCM



Hawthorne House Wilmslow SK9 5HJ

£1,200 PCM



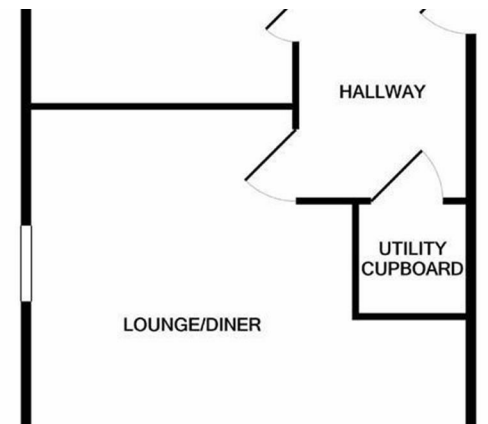
FURNISHED AVAILABLE LATE MARCH - VIEWING RECOMMENDED

This contemporary and well proportioned first floor apartment is set within the heart of Wilmslow village just a stones throw from local shops, fashionable restaurants and the train station.

The attractive accommodation can be accessed via lift or stairs and comprises in brief: Private entrance hallway, open plan living room and kitchen/diner area with integrated appliances, double bedroom and a modern bathroom suite.

The apartment benefits from an allocated parking space set behind electric gates. A wonderful property in an enviable location. 12 MONTH LET ONLY £1200.00pcm

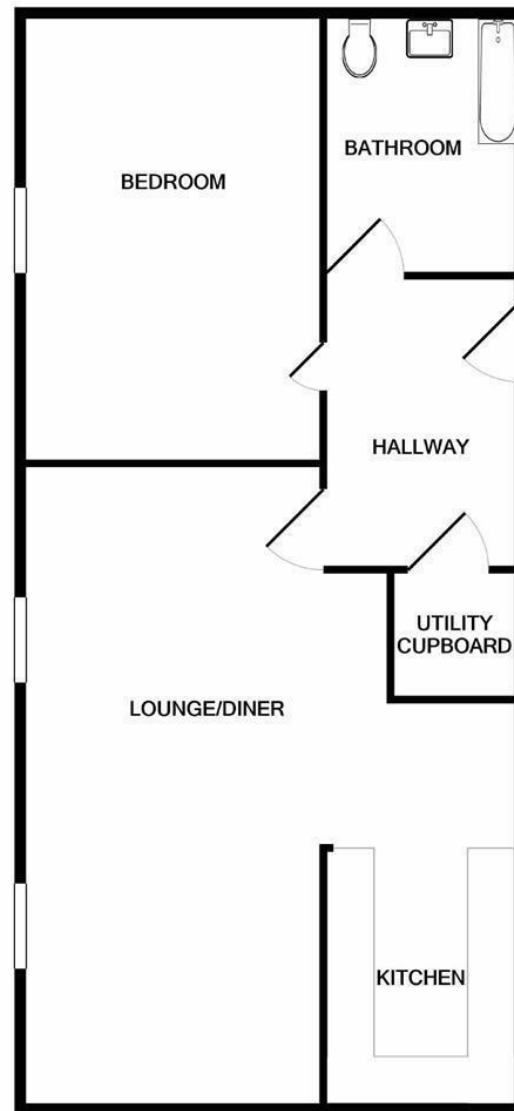
Contact Wilmslow 01625 536300



- CENTRAL LOCATION
- GATED DEVELOPMENT
- SPACIOUS INTERIOR
- IMMACULATE THROUGHOUT
- COUNCIL TAX C



Energy Efficiency Rating		
	Current	Potential
Very energy efficient - lower running costs		
(92 plus) A		
(81-91) B	84	84
(69-80) C		
(55-68) D		
(39-54) E		
(21-38) F		
(1-20) G		
Not energy efficient - higher running costs		
England & Wales	EU Directive 2002/91/EC	



Measurements are approximate. Not to scale. Illustrative purposes only
Made with Metropix ©2022



These particulars are believed to be accurate but they are not guaranteed and do not form a contract. Neither Jordan Fishwick nor the vendor or lessor accept any responsibility in respect of these particulars, which are not intended to be statements or representations of fact and any intending purchaser or lessee must satisfy himself by inspection or otherwise as to the correctness of each of the statements contained in these particulars. Any floorplans on this brochure are for illustrative purposes only and are not necessarily to scale.

Offices at: Chorlton, Didsbury, Disley, Hale, Glossop, Macclesfield, Manchester Deansgate, Manchester Whitworth Street, New Mills, Sale, Wilmslow and Withington

01625 536300

wilmslow@jordanfishwick.co.uk
www.jordanfishwick.co.uk