

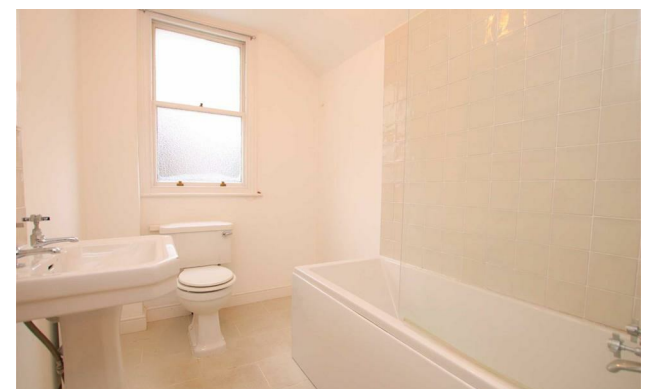
*Jordan* fishwick

84 STAMFORD PARK ROAD HALE ALTRINCHAM WA15 9ER  
PCM £1,295 PCM



## 84 STAMFORD PARK ROAD HALE ALTRINCHAM WA15 9ER

\*\*\* AVAILABLE END OF MARCH \*\*\* A BEAUTIFUL EXAMPLE OF A HALE PERIOD END OF TERRACE WITH VIEWS OVER STAMFORD PARK AND STROLLING DISTANCE TO BOTH HALE AND ALTRINCHAM. Slightly larger than some others on the road, the accommodation comprises; entrance hall, spacious living area with feature fireplace and extended kitchen with ample storage space. To the first floor there are two large double bedrooms and a modern bathroom with shower over bath. To the rear of the property is a south facing garden and a separate gated yard. A truly fantastic house and early viewing is advised as we are anticipating a lot of interest. Please contact the Hale office to arrange viewings. 0161 929 9797.



Energy Efficiency Rating		Current	Potential
Very energy efficient - lower running costs			
(92 plus) A			83
(81-91) B			
(69-80) C			
(55-68) D		52	
(39-54) E			
(21-38) F			
(1-20) G			
Not energy efficient - higher running costs			
England & Wales		EU Directive 2002/91/EC	