



10

COMMERCIAL STREET

FOR SALE /
TO LET

GROUND
FLOOR OFFICE

3,265 SQ FT
(303.3 SQ M)



0161 828 6440

Richard.Wharton@eu.jll.com
07570 938698



Apt 9 Hill Quays, Block B 8 Commercial Street, Manchester, M15 4QW

EWS1 IN PLACE - MORTGAGE BUYERS INVITED!!

Jordan Fishwick are pleased to offer for sale this larger than average first floor luxury apartment is located in Block B Hill Quays with added benefits of water views and balcony. Situated close to Deansgate station allowing for excellent transport links, the property comprises of; entrance hall with ample storage space, spacious living room with floor to ceiling window and open to the kitchen, with white high gloss kitchen and fitted appliances, dishwasher, washer/dryer, oven and hob. Two double sized bedrooms with the master having full en-suite shower and separate family bathroom with tiled floor and chrome heated towel rail. No Parking. Council Tax Band D.

Price £220,000

Viewing arrangements

Viewing strictly by appointment through the agent
245 Deansgate, Manchester, M3 4EN 0161 833 9499 opt 3

Entrance Hall

Wooden flooring. Spotlights. Access to all rooms.

Living Room/Kitchen

23'7" x 15'5"

Range of wall and base units with complimentary worktops over. Integrated fridge/freezer, oven with hob over and extractor. Spot lights. Wooden flooring. Wall mounted electric heater. Access to balcony.

Bedroom One

11'7" x 11'5"

Fitted carpet. Wall mounted electric heater. Spotlights.

En-suite

Fully tiled suite. Floating sink with mixer tap. Shower cubical with mixer shower. Low level W/C. Heated towel rail. Shaver point.

Bedroom Two

12'0" x 9'3"

Fitted carpet. Wall mounted electric heater. Access to balcony. Spotlights.

Bathroom

Fully tiled suite. Floating sink with mixer tap. bath with mixer shower over. Low level W/C. Heated towel rail. Shaver point.

Externally

Balcony. Lift to all floors.

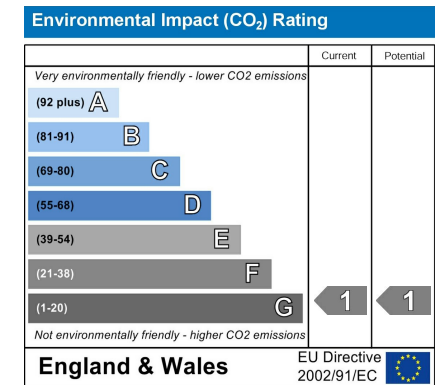
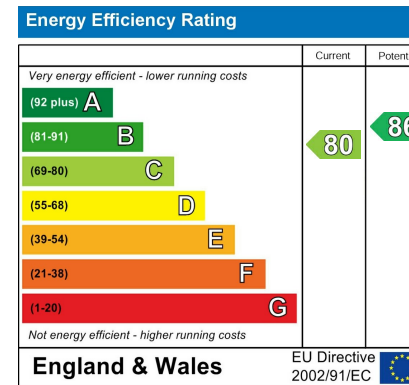
Additional Information

Service charges - £2000 per annum

Lease - 150 years from 2002

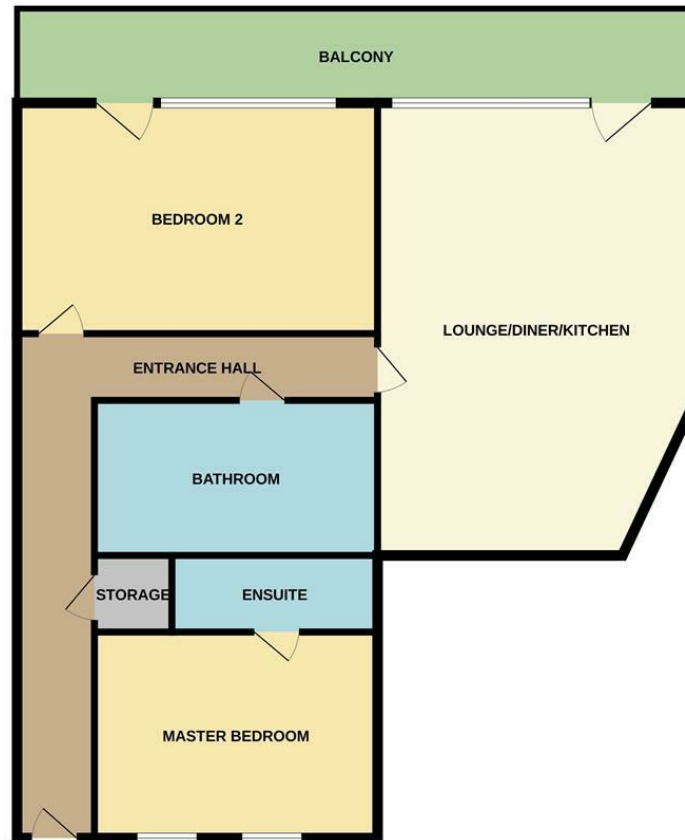
Ground rent - £100 per annum

Council Tax Band - D





FIRST FLOOR



Measurements are approximate. Not to scale. Illustrative purposes only.
Made with Metropix ©2023



These particulars are believed to be accurate but they are not guaranteed and do not form a contract. Neither Jordan Fishwick nor the vendor or lessor accept any responsibility in respect of these particulars, which are not intended to be statements or representations of fact and any intending purchaser or lessee must satisfy himself by inspection or otherwise as to the correctness of each of the statements contained in these particulars. Any floorplans on this brochure are for illustrative purposes only and are not necessarily to scale.

Offices at: Chorlton, Didsbury, Disley, Hale, Glossop, Macclesfield, Manchester Deansgate, Manchester Whitworth Street, New Mills, Sale, Wilmslow and Withington

245 Deansgate, Manchester, M3 4EN

0161 833 9499 opt 3

manchester@jordanfishwick.co.uk

www.jordanfishwick.co.uk

