



Jordan fishwick

Priory Road
SALE



Priory Road SALE M33 2BS

£2,500 PCM



The Property

Epc Rating D - Council Tax F

Priory Road, Sale. A beautiful and incredibly distinctive five-bedroom two bathroom period semi-detached property on one of Sale's most popular roads. Stunning family home providing spacious accommodation with an abundance of period features throughout. The ground floor boasts a charming entrance hall, two large reception rooms along with a fantastic dining kitchen with an impressive stove and extensive cellars ideal for storage. To the first floor there are two bedrooms, a dressing room, a family bathroom with free standing bath and a separate shower and an additional separate WC. To the second floor there are three further bedrooms, one which is serviced by an en-suite. To the front of the property is a private garden ideal for summer evenings and driveway to the rear. An impressive family home with the potential to create a warm and cosy feel - within close proximity of the town centre, the Metrolink, various motorway links and in the catchment area for several fantastic schools such as Sale Grammar - and of course Worthington Park is just around the corner! Part furnished.

Directions

- Semi Detached
- Garden
- Part Furnished
- Five Bedrooms
- Two Reception rooms
- Close To Sale Town Centre
- AVAILABLE NOW
- EPC RATING D
- Council Tax Band F

Postcode - M33 2BS

EPC Rating - D

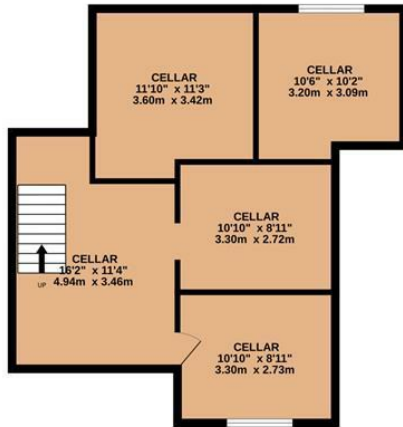
Floor Area - sq ft

Local Authority - Trafford

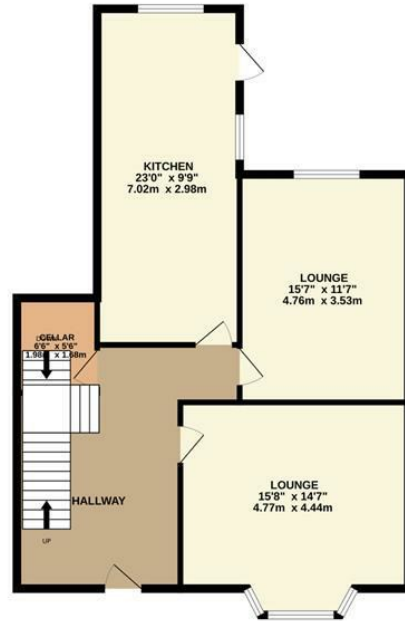
Council Tax - F



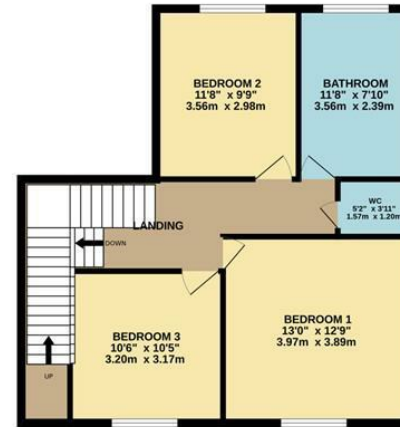
BASEMENT LEVEL



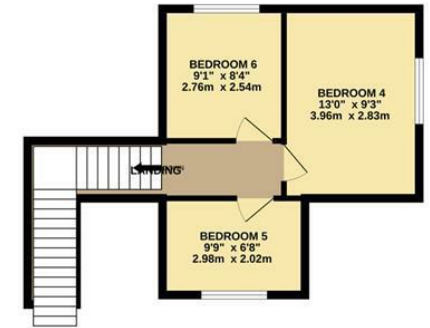
GROUND FLOOR



1ST FLOOR



2ND FLOOR



Measurements are approximate. Not to scale. Illustrative purposes only
Made with Metropix ©2024



These particulars are believed to be accurate but they are not guaranteed and do not form a contract. Neither Jordan Fishwick nor the vendor or lessor accept any responsibility in respect of these particulars, which are not intended to be statements or representations of fact and any intending purchaser or lessee must satisfy himself by inspection or otherwise as to the correctness of each of the statements contained in these particulars. Any floorplans on this brochure are for illustrative purposes only and are not necessarily to scale.

Offices at: Offices at Chorlton, Didsbury, Disley, Hale, Glossop, Macclesfield, Manchester Deansgate, Manchester Whitworth Street, New Mills, Sale, Wilmslow and Withington

95-97 School Road, Sale, Cheshire, M33 7XA

sale@jordanfishwick.co.uk
www.jordanfishwick.co.uk