



jordanfishwick

Bowland Court
Sale



Bowland Court Sale M33 3DE

£1,000



The Property

* TWO BEDROOM * GROUND FLOOR A well presented two bedroom ground floor apartment situated close to Sale Town Centre on the popular tree lined Wardle Road. The accommodation comprises of entrance hall with large storage cupboard, spacious living room/dining area, modern fitted kitchen, one double bedroom with fitted wardrobes, a single bedroom and a modern bathroom with shower over bath. This property benefits from gas central heating with radiators throughout and a storage cupboard houses the water tank. Outside there are landscaped gardens, communal parking. AVAILABLE NOW.

Directions

- Available Now
- Two Bedroom Ground Floor Flat
- New Windows
- EPC Rating C
- Council Tax Band B
- Desirable Location
- Outdoor Communal Space
- Plenty of Storage
- Parking

Postcode - M33 3DE

EPC Rating - C

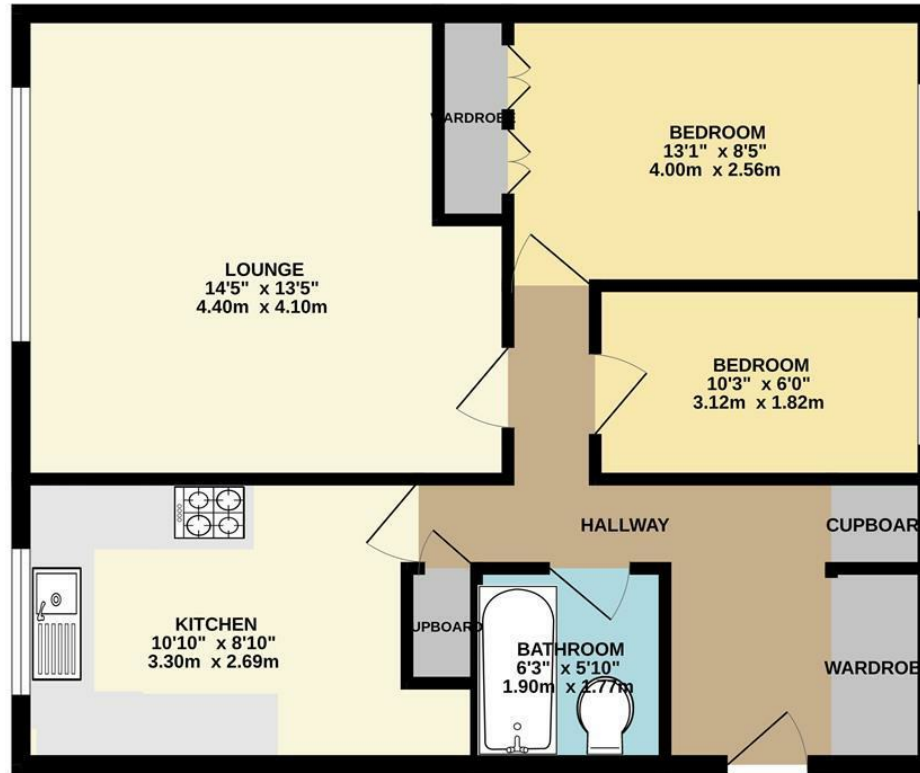
Floor Area - sq ft

Local Authority - Trafford

Council Tax - B



GROUND FLOOR
648 sq.ft. (60.2 sq.m.) approx.



TOTAL FLOOR AREA : 648 sq.ft. (60.2 sq.m.) approx.
Measurements are approximate. Not to scale. Illustrative purposes only.
Made with Metropix ©2023



These particulars are believed to be accurate but they are not guaranteed and do not form a contract. Neither Jordan Fishwick nor the vendor or lessor accept any responsibility in respect of these particulars, which are not intended to be statements or representations of fact and any intending purchaser or lessee must satisfy himself by inspection or otherwise as to the correctness of each of the statements contained in these particulars. Any floorplans on this brochure are for illustrative purposes only and are not necessarily to scale.

Offices at: Offices at Chorlton, Didsbury, Disley, Hale, Glossop, Macclesfield, Manchester Deansgate, Manchester Whitworth Street, New Mills, Sale, Wilmslow and Withington

95-97 School Road, Sale, Cheshire, M33 7XA

sale@jordanfishwick.co.uk
www.jordanfishwick.co.uk