



*jordan fishwick*

12 Fernleigh House, 77 - 79 Alderley Road,  
PCM £4,000 PCM



## Fernleigh House WILMSLOW

£4,000 PCM



AVAILABLE MID FEBRUARY PART OR FURNISHED - VIEWING ESSENTIAL TO APPRECIATE

Two words SIMPLY STUNNING !

Located in the heart of Wilmslow is this immaculate three double bedroom penthouse, Set behind electric gates this property forms part of an exclusive development of 12 apartments.

Communal entrance hall and stairs or lift to first floor, private entrance hall with large storage cupboard, a generously proportioned open plan lounge dining kitchen fitted with induction hob and oven, fridge freezer and dishwasher with doors to private sunny balcony, utility room with ample storage and washer dryer. Main bedroom with fitted wardrobes and en suite bathroom, two further double bedrooms, main bathroom with shower over bath,

Gas central heating and underfloor heating throughout,


Secure off road parking for 2 cars

Contact Wilmslow 01625 536300 £4000.00pcm

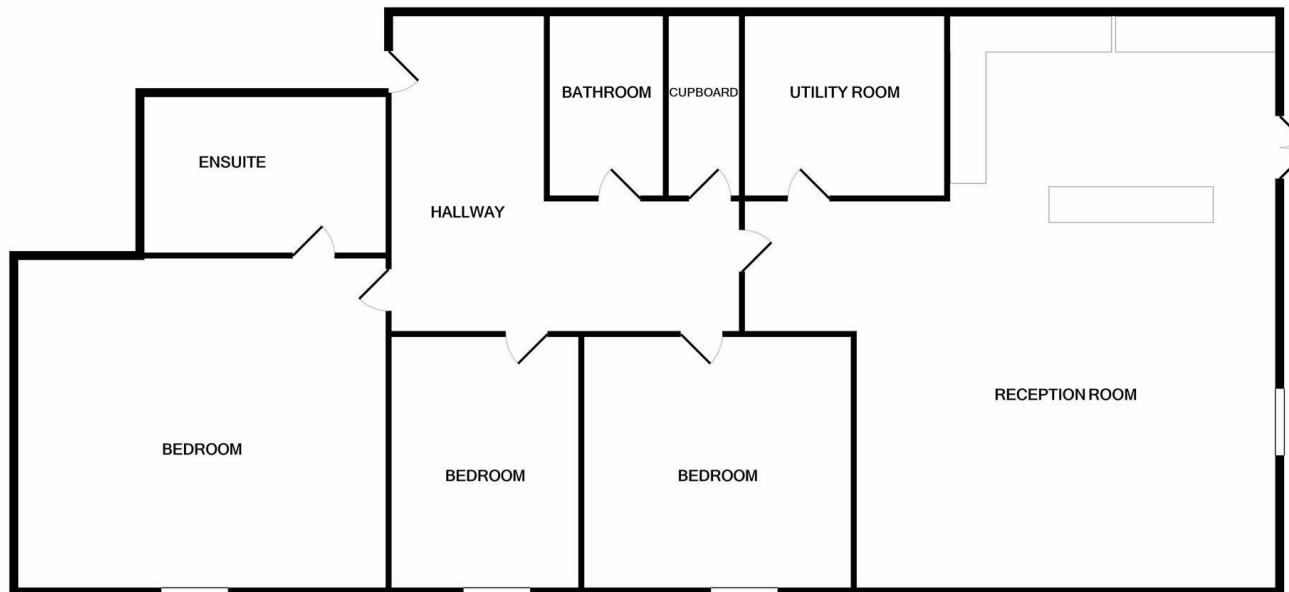


- THREE DOUBLE BEDROOMS
- CENTRAL LOCATION
- IMMACULATE THROUGHOUT
- GATED DEVELOPMENT
- COUNCIL TAX G



Energy Efficiency Rating		
	Current	Potential
Very energy efficient - lower running costs		
(92 plus) <b>A</b>		
(81-91) <b>B</b>	<b>87</b>	<b>87</b>
(69-80) <b>C</b>		
(55-68) <b>D</b>		
(39-54) <b>E</b>		
(21-38) <b>F</b>		
(1-20) <b>G</b>		
Not energy efficient - higher running costs		
<b>England &amp; Wales</b>	EU Directive 2002/91/EC 	





Measurements are approximate. Not to scale. Illustrative purposes only  
Made with Metropix ©2022



These particulars are believed to be accurate but they are not guaranteed and do not form a contract. Neither Jordan Fishwick nor the vendor or lessor accept any responsibility in respect of these particulars, which are not intended to be statements or representations of fact and any intending purchaser or lessee must satisfy himself by inspection or otherwise as to the correctness of each of the statements contained in these particulars. Any floorplans on this brochure are for illustrative purposes only and are not necessarily to scale.

Offices at: Chorlton, Didsbury, Disley, Hale, Glossop, Macclesfield, Manchester Deansgate, Manchester Whitworth Street, New Mills, Sale, Wilmslow and Withington

01625 536300

wilmslow@jordanfishwick.co.uk  
www.jordanfishwick.co.uk