



jordan fishwick

WITHINGTON
Palatine Road



Palatine Road, Withington, M20 3LA

Guide Price £230,000



The Property

A stylish TOP FLOOR apartment that has been modernised throughout with TWO EXCELLENT DOUBLE BEDROOMS and WELL PRESENTED living space extending over 750 sq ft. Numerous noteworthy features include a light & airy lounge/dining room, modern fitted kitchen with a range of integrated appliances, luxury tiled shower room, two generous double bedrooms and a welcoming entrance hall. In addition, there are modern electric heaters, uPVC double glazing, a separate & secure entrance vestibule (only accessed by two flats), residents parking, well tended communal gardens and a great location which is within easy reach of Didsbury, West Didsbury, Withington and The Metrolink.

Directions

M20 3LA



- Spacious top floor apartment
- Recently modernised throughout
- Two excellent double bedrooms
- Generous lounge/dining room
- Modern fitted kitchen
- Integrated appliances
- Luxury tiled shower room
- uPVC double glazing & modern heaters
- Residents parking
- Close to West Didsbury and Withington

Postcode - M20 3LA

EPC Rating - E

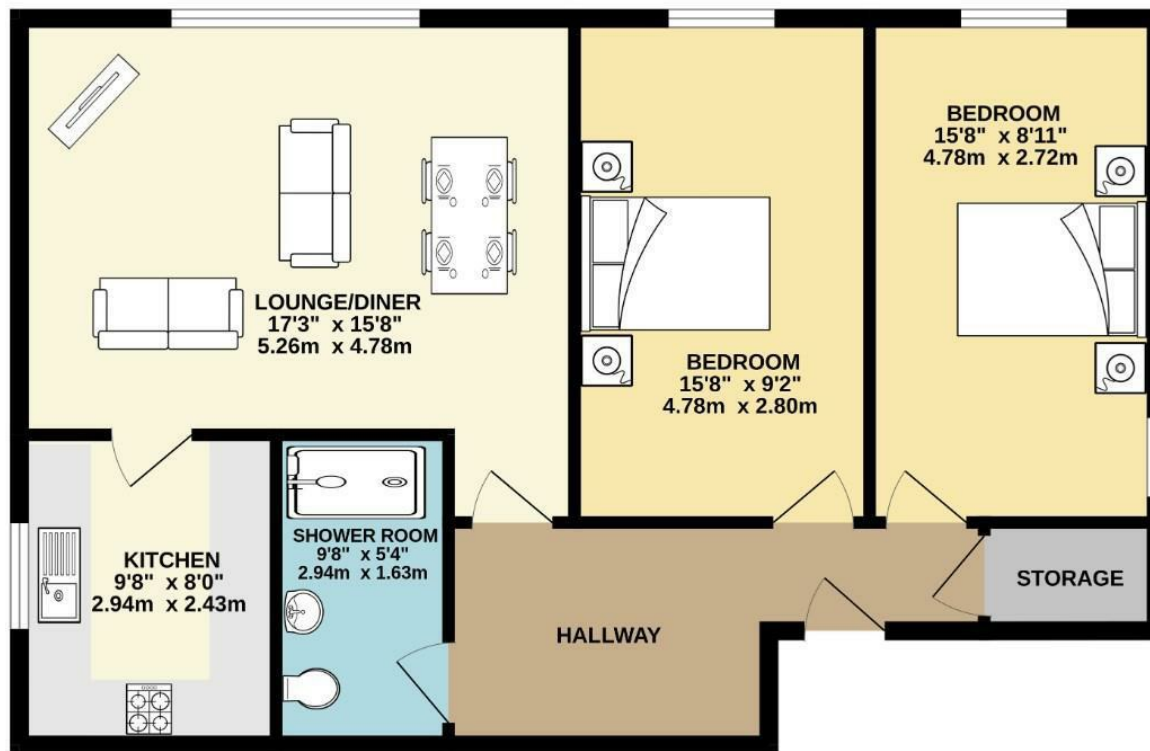
Floor Area - 756.00 sq ft

Local Authority - Manchester City Council

Council Tax - B



SECOND FLOOR
756 sq.ft. (70.2 sq.m.) approx.



TOTAL FLOOR AREA: 756 sq.ft. (70.2 sq.m.) approx.
Measurements are approximate. Not to scale. Illustrative purposes only
Made with Metropix ©2024



These particulars are believed to be accurate but they are not guaranteed and do not form a contract. Neither Jordan Fishwick nor the vendor or lessor accept any responsibility in respect of these particulars, which are not intended to be statements or representations of fact and any intending purchaser or lessee must satisfy himself by inspection or otherwise as to the correctness of each of the statements contained in these particulars. Any floorplans on this brochure are for illustrative purposes only and are not necessarily to scale.

Offices also at: Wilmslow, Macclesfield, Hale, Sale, Chorlton, Glossop, Manchester & Salford

757-759 Wilmslow Road, Didsbury Village, Manchester

0161 445 4480

didsbury@jordanfishwick.co.uk
www.jordanfishwick.co.uk