



jordan fishwick

BURNAGE
Green End Road



Green End Road, Burnage, M19 1LE

Guide Price £325,000

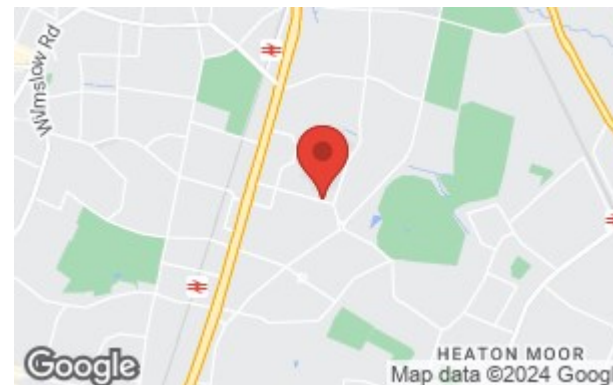


The Property

A stunning three bedroom semi detached property having been comprehensively and sympathetically renovated throughout, with lovely proportioned living space, ample parking, delightful rear garden and a great location on a tree lined residential road. (931 sq ft). Gas central heating is complemented by uPVC double glazing, with the stylish living space incorporating an entrance hall with turning staircase to the first floor, living room with bay window, superb dining kitchen with a range of fitted units and integrated appliances, three good sized bedrooms, modern tiled bathroom and a separate WC.

Directions

M19 1LE



- Stunning semi detached
- 'Back to brick' renovation in 2018
- Living room with bay window
- Dining kitchen extending over 22ft
- Integrated appliances
- Three good sized bedrooms
- Modern shower room
- uPVC double glazing
- Gas central heating
- Driveway & delightful rear garden

Postcode - M19 1LE

EPC Rating - C

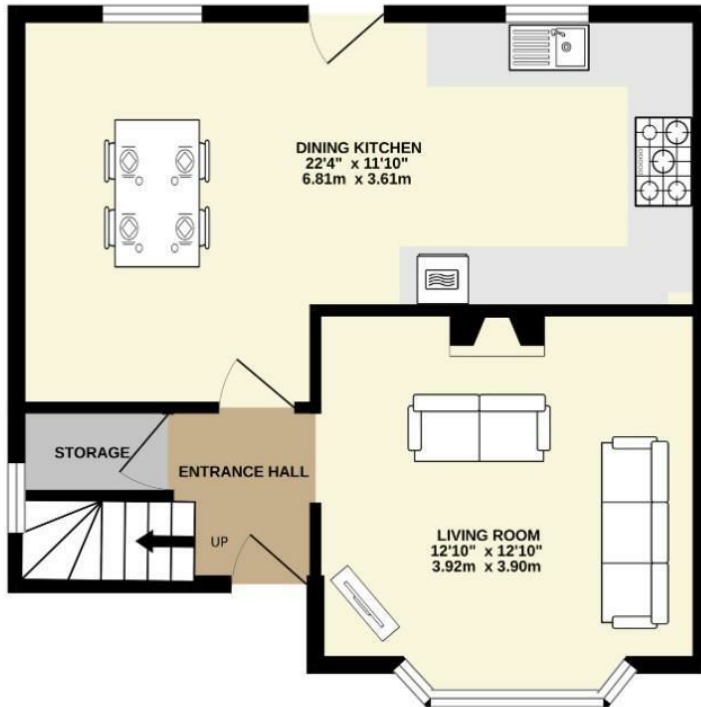
Floor Area - 931.00 sq ft

Local Authority - Manchester City Council

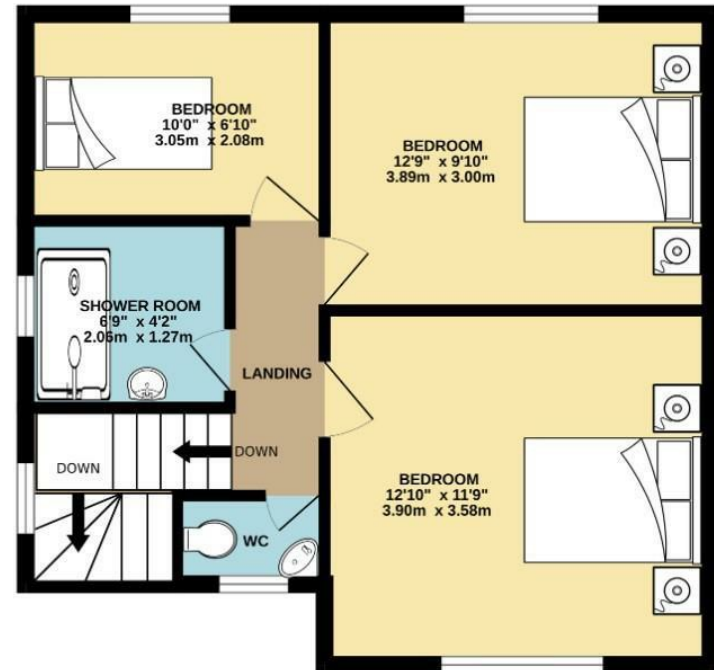
Council Tax - A



GROUND FLOOR
467 sq.ft. (43.4 sq.m.) approx.



1ST FLOOR
464 sq.ft. (43.1 sq.m.) approx.



TOTAL FLOOR AREA : 931 sq.ft. (86.5 sq.m.) approx.
Measurements are approximate. Not to scale. Illustrative purposes only
Made with Metropix ©2023



These particulars are believed to be accurate but they are not guaranteed and do not form a contract. Neither Jordan Fishwick nor the vendor or lessor accept any responsibility in respect of these particulars, which are not intended to be statements or representations of fact and any intending purchaser or lessee must satisfy himself by inspection or otherwise as to the correctness of each of the statements contained in these particulars. Any floorplans on this brochure are for illustrative purposes only and are not necessarily to scale.

Offices also at: Wilmslow, Macclesfield, Hale, Sale, Chorlton, Glossop, Manchester & Salford

757-759 Wilmslow Road, Didsbury Village, Manchester

0161 445 4480

didsbury@jordanfishwick.co.uk
www.jordanfishwick.co.uk