



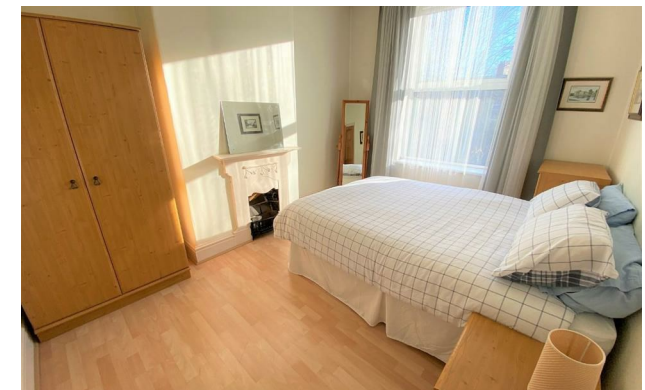
Jordan fishwick

BURNAGE
Connaught Avenue



Connaught Avenue, Burnage, M19 2NW

Guide Price £350,000



The Property

An attractive period semi detached property which has been well cared for over the years, offering a great blend of original characteristics alongside today's more modern comforts, with a southerly facing garden, cul-de-sac location and no onward chain. 1060 sq ft. The living space benefits from gas central heating and majority uPVC double glazing, in outline :- Entrance hall with staircase to the first floor, lounge with bay window to the front, separate dining room and kitchen extending over 14ft on the ground floor, with the first floor giving way to three good sized bedrooms and the bathroom. The property is set behind a paved garden to the front, with a good sized south facing rear garden and mature borders.

Directions

M19 2NW



- Attractive period semi detached
- Three good sized bedrooms
- Two separate reception rooms
- Fitted kitchen over 14ft
- South facing rear garden
- Cul-de-sac location
- Gas central heating
- Majority uPVC double glazing
- Original characteristics
- No onward chain

Postcode - M19 2NW

EPC Rating - D

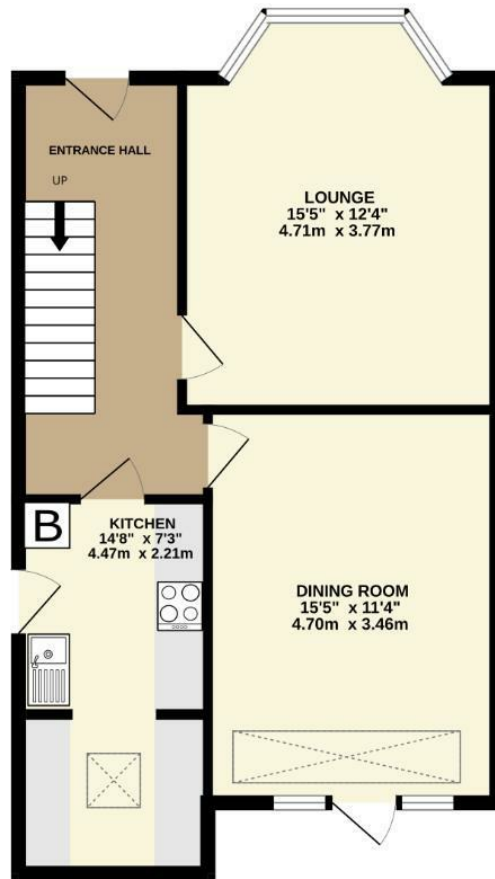
Floor Area - 1060.00 sq ft

Local Authority - Manchester City Council

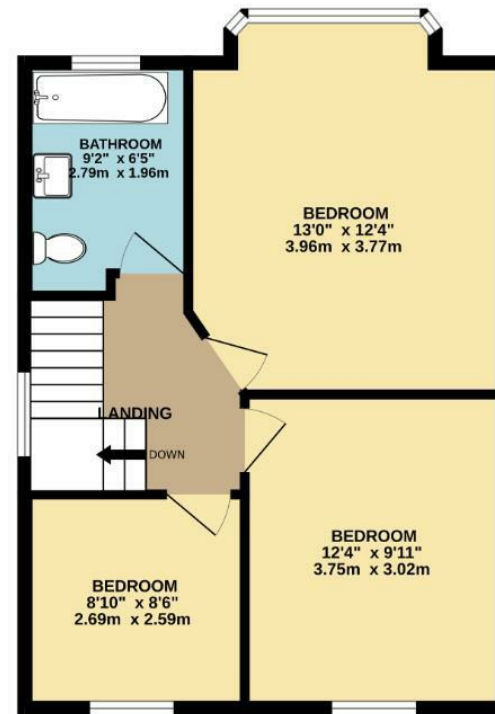
Council Tax - C



GROUND FLOOR
570 sq.ft. (52.9 sq.m.) approx.



1ST FLOOR
490 sq.ft. (45.5 sq.m.) approx.



TOTAL FLOOR AREA : 1060 sq.ft. (98.5 sq.m.) approx.
Measurements are approximate. Not to scale. Illustrative purposes only
Made with Metropix ©2023



These particulars are believed to be accurate but they are not guaranteed and do not form a contract. Neither Jordan Fishwick nor the vendor or lessor accept any responsibility in respect of these particulars, which are not intended to be statements or representations of fact and any intending purchaser or lessee must satisfy himself by inspection or otherwise as to the correctness of each of the statements contained in these particulars. Any floorplans on this brochure are for illustrative purposes only and are not necessarily to scale.

Offices also at: Wilmslow, Macclesfield, Hale, Sale, Chorlton, Glossop, Manchester & Salford

757-759 Wilmslow Road, Didsbury Village, Manchester

0161 445 4480

didsbury@jordanfishwick.co.uk
www.jordanfishwick.co.uk