



4 Dowland Close, Manchester, M23 0GR

£250,000

[www.jordanfishwick.co.uk](http://www.jordanfishwick.co.uk)





# Jordan Fishwick

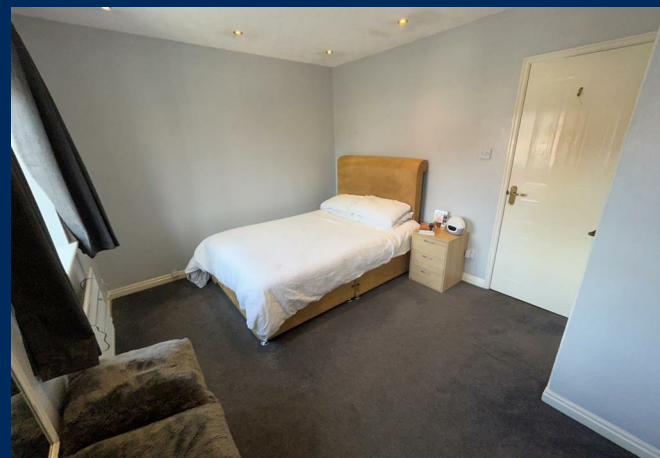
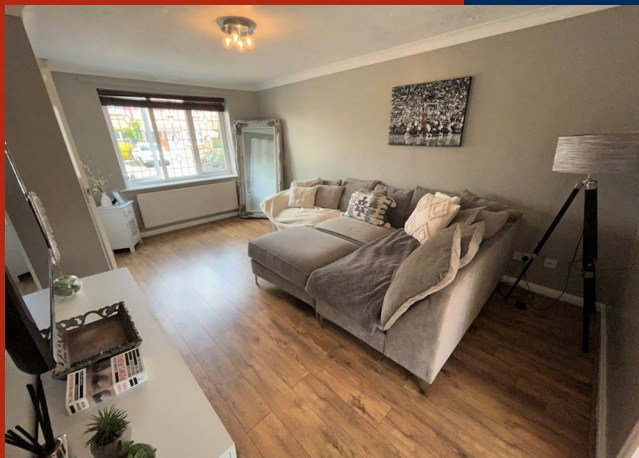
- Two Bedrooms
- Freehold
- EPC Rating D
- Council Tax Band C
- Parking
- Cul-de-Sac Location
- No Chain
- Close to Metrolink
- Rear Garden

A modern \*CHAIN FREE\* two bedroom mid-mews property located on a quiet cul-de-sac within walking distance of The Metrolink, with easy access to M56/M60 motorway network as well as Manchester Airport and the Hospital. The accommodation briefly comprises spacious living room, contemporary fully-fitted kitchen/ diner offering access to rear garden. Two ample-sized double bedrooms with the master benefiting from built-in wardrobes. Parking to front and rear. Pleasant paved and decked rear garden. EPC Rating D. Council Tax Band C. \*FREEHOLD\*

£250,000



- Entrance Hall
- Living Room
- Kitchen Diner
- Master Bedroom
- Bedroom Two
- Bathroom
- Garden





01619622828

*Jordan fishwick*

*Why take a risk?*  
*Sell Smarter*





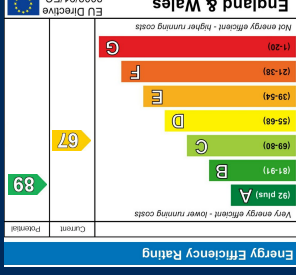
## Floor Plans



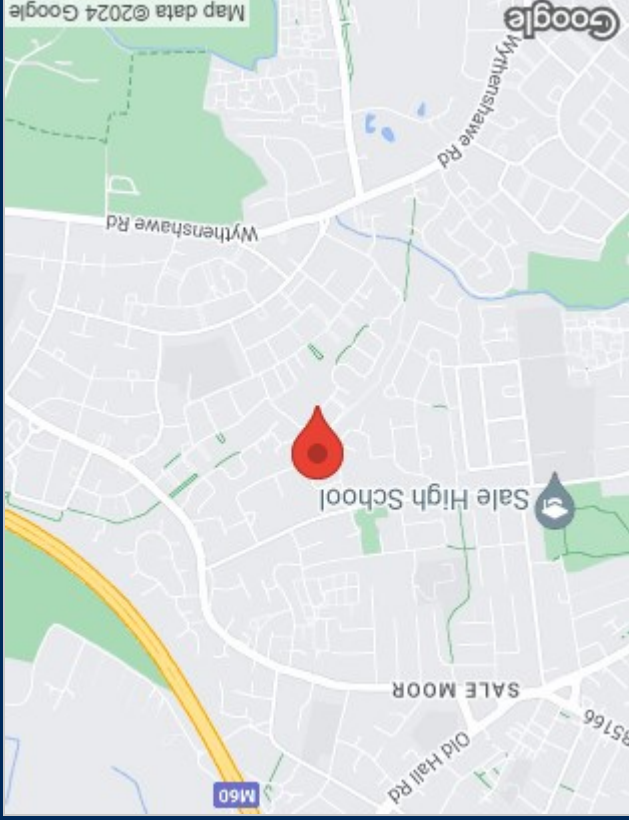
## Viewing

Please contact our Sale Office on 0161 962 2828 if you wish to arrange a viewing appointment for this property or require further information.

The particulars are set out as a general outline only for the guidance of intended purchasers or lessees, and do not constitute, any part of a contract. Nothing in these particulars shall be deemed to be a statement that the property is in good structural condition or otherwise nor that any of the services, appliances, equipment or facilities are in good working order. Purchasers should satisfy themselves of this prior to purchasing.



## Energy Performance Graph



## Location Map