



Jordan fishwick

56 Dickenson Road, Fallowfield, M14 5ST
£850 Per Calendar Month



**Dickenson Road Manchester
M14 5ST**

£850 Per Calendar Month



The Property

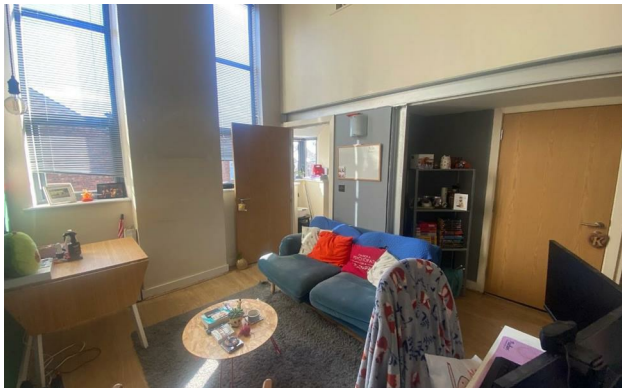
**** AVAILABLE DECEMBER **** A well presented duplex apartment forming part of a popular development located only a short distance from Manchester City Centre, enjoying a first floor position with allocated parking and internet included. Ideal for single occupant or couple. Comprising: open plan living space, kitchen, shower room, staircase giving access to the double bedroom. The apartment is well situated just off Wilmslow Road offering excellent transport links to Manchester and beyond. To the ground floor there is a secure communal bike storage room. Furnished. Internet inc. in the rental figure. Viewing recommended - please call Withington 0161 438 2411.

EPC - C

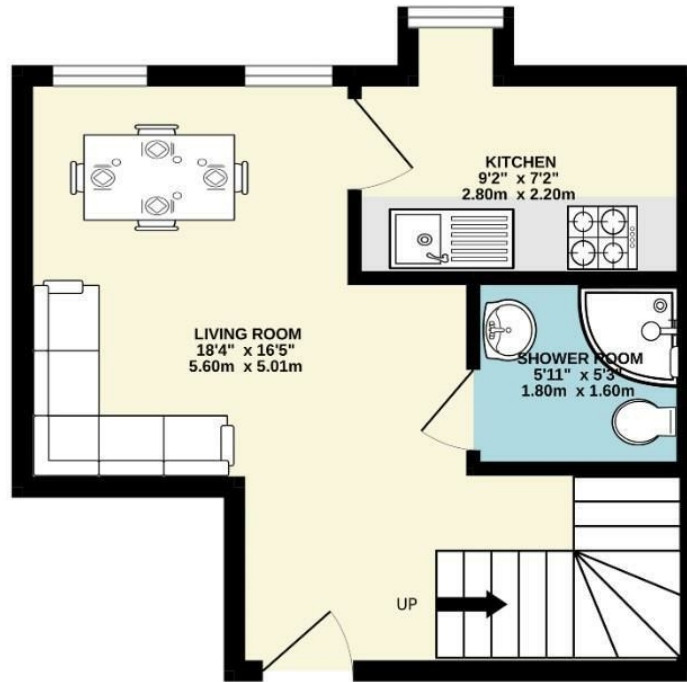
- Available December
- One Double Bed Duplex
- Open Plan Living Space & Separate Kitchen
- Fully Furnished
- Internet Included
- Ideal for Single Occupant or Couple
- Close to Manchester City Centre
- Located off Wilmslow Road
- Allocated Parking
- Council Tax Band A



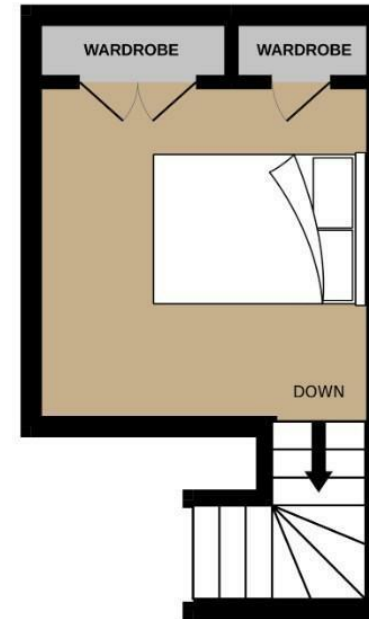
Energy Efficiency Rating		
	Current	Potential
Very energy efficient - lower running costs		
(92 plus) A		
(81-91) B		
(69-80) C	77	82
(55-68) D		
(39-54) E		
(21-38) F		
(1-20) G		
Not energy efficient - higher running costs		
England & Wales	EU Directive 2002/91/EC	



GROUND FLOOR
276 sq.ft. (25.7 sq.m.) approx.



1ST FLOOR
130 sq.ft. (12.1 sq.m.) approx.



TOTAL FLOOR AREA : 406 sq.ft. (37.8 sq.m.) approx.
Measurements are approximate. Not to scale. Illustrative purposes only
Made with Metropix ©2022