



jordan fishwick

MANCHESTER
Shearwater House



Shearwater House, Manchester, M19 1AT

£175,000

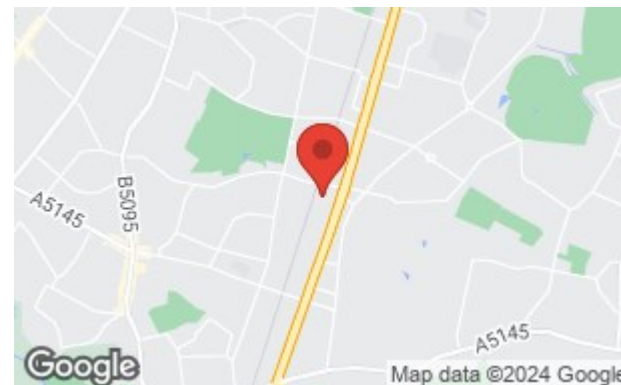


The Property

A most appealing first floor, two double bedroom, two bathroom apartment, set within a purpose built development that was constructed circa 2003. Enjoying a convenient location with easy access to Didsbury Village and excellent transport links by rail and along nearby Kingsway (A34). Double glazed and well presented throughout, the living space in outline comprises:- Generous entrance hall with useful storage, lounge/dining room over 20ft with 'Juliette' balcony, fitted kitchen with appliances and a range of units, two double bedrooms, en-suite shower room to the main and fitted bathroom with white suite. Externally, there is allocated residents parking and well tended communal gardens and grounds. No chain.

Directions

M19 1AT



- Two double bedroom & two bathroom apartment
- First floor location
- Juliette balcony off living area
- Excellent location close to all amenities
- Electric heating & double glazed
- Allocated parking
- No chain

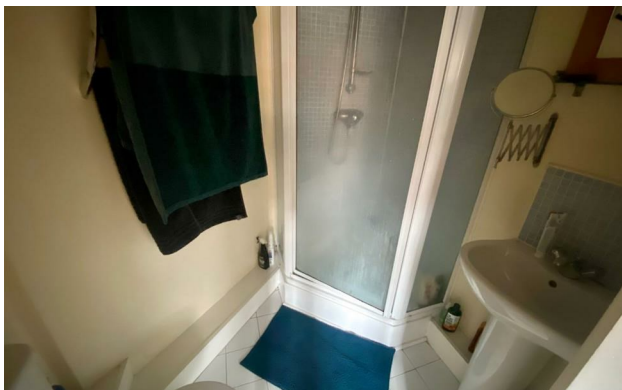
Postcode - M19 1AT

EPC Rating - B

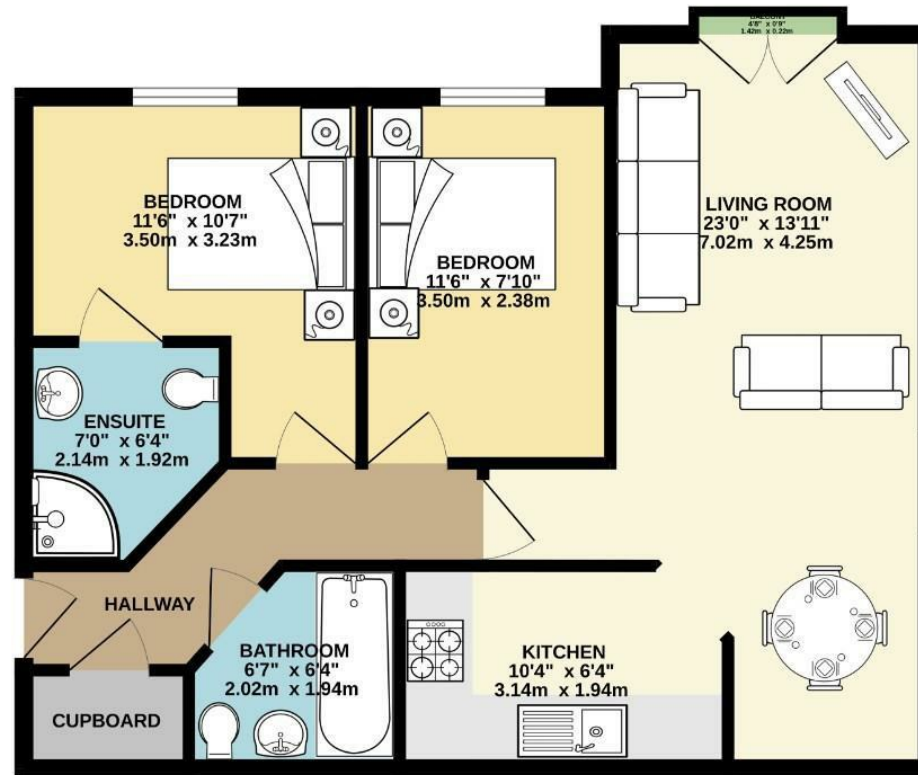
Floor Area - 617.00 sq ft

Local Authority - Manchester City Council

Council Tax - B



GROUND FLOOR
617 sq.ft. (57.3 sq.m.) approx.



TOTAL FLOOR AREA : 617 sq.ft. (57.3 sq.m.) approx.
Measurements are approximate. Not to scale. Illustrative purposes only.
Made with Metropix ©2023



These particulars are believed to be accurate but they are not guaranteed and do not form a contract. Neither Jordan Fishwick nor the vendor or lessor accept any responsibility in respect of these particulars, which are not intended to be statements or representations of fact and any intending purchaser or lessee must satisfy himself by inspection or otherwise as to the correctness of each of the statements contained in these particulars. Any floorplans on this brochure are for illustrative purposes only and are not necessarily to scale.

Offices also at: Wilmslow, Macclesfield, Hale, Sale, Chorlton, Glossop, Manchester & Salford

757-759 Wilmslow Road, Didsbury Village, Manchester

0161 445 4480

didsbury@jordanfishwick.co.uk
www.jordanfishwick.co.uk