



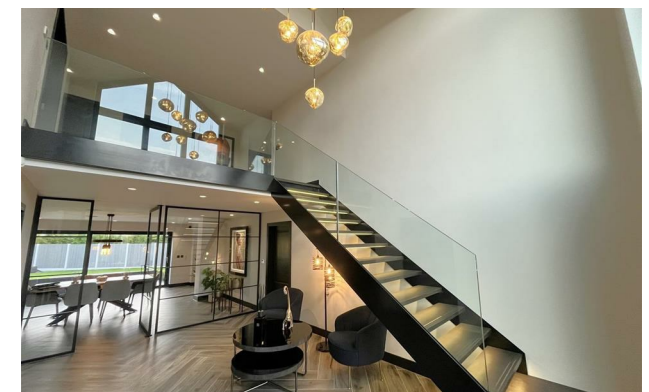
Jordan fishwick

3 Dane Drive, SK9 2AH
Guide Price £1,295,000



Dane Drive Wilmslow SK9 2AH

Guide Price £1,295,000



The Property

An individual and breathtaking contemporary detached property offering one of a kind upgraded and spacious accommodation (approx. 3000 sq ft) throughout. This distinctive five bedroom property constructed of striking rendering has an appexed elevation with sympathetic and tasteful stone detailing. Meticulously designed, this property has it all. Boasting one of Wilmslow's premier locations, located in a highly desirable location within Wilmslow this outstanding family home is ideally placed for access to a superb range of local amenities, conveniently less than half a mile from Wilmslow town centre and a mile from Alderley Edge village. Both the town and the village have Waitrose supermarkets, superb shopping and recreational facilities.

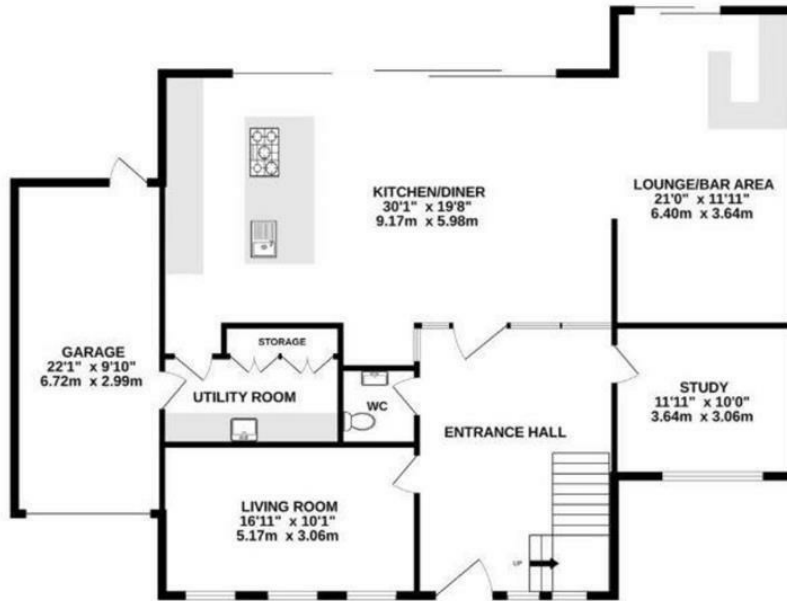
- Individual Detached property
- Five double bedrooms
- Stunning Interior
- High quality fittings and Fixtures
- Excellent Location



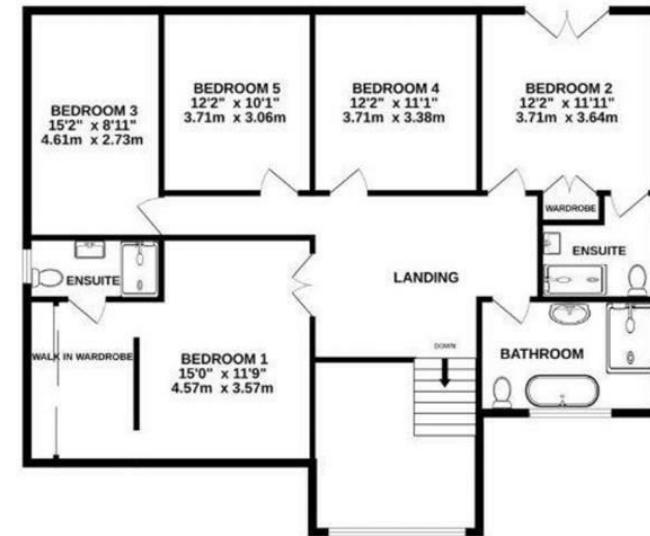
Energy Efficiency Rating		
	Current	Potential
Very energy efficient - lower running costs		
(92 plus) A		
(81-91) B		
(69-80) C	74	81
(55-68) D		
(39-54) E		
(21-38) F		
(1-20) G		
Not energy efficient - higher running costs		
England & Wales	EU Directive 2002/91/EC	



GROUND FLOOR
1633 sq.ft. (151.7 sq.m.) approx.



1ST FLOOR
1278 sq.ft. (118.7 sq.m.) approx.



TOTAL FLOOR AREA : 2911 sq.ft. (270.4 sq.m.) approx.



These particulars are believed to be accurate but they are not guaranteed and do not form a contract. Neither Jordan Fishwick nor the vendor or lessor accept any responsibility in respect of these particulars, which are not intended to be statements or representations of fact and any intending purchaser or lessee must satisfy himself by inspection or otherwise as to the correctness of each of the statements contained in these particulars. Any floorplans on this brochure are for illustrative purposes only and are not necessarily to scale.

Offices at: Chorlton, Didsbury, Disley, Hale, Glossop, Macclesfield, Manchester Deansgate, Manchester Whitworth Street, New Mills, Sale, Wilmslow and Withington