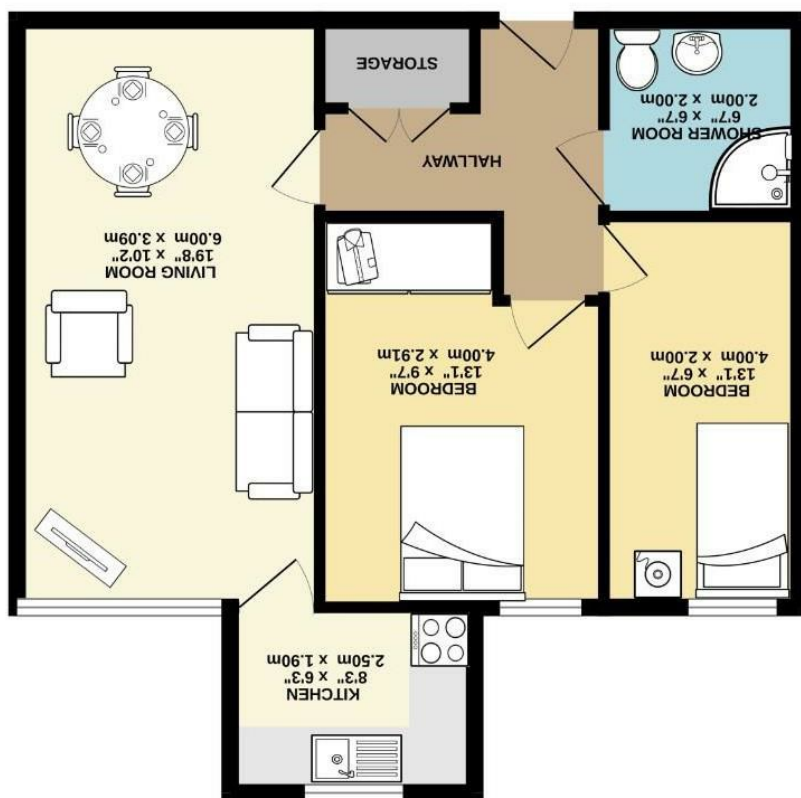


These particulars are believed to be accurate but they are not guaranteed and do not form a contract. Neither Jordan Fishwick nor the vendor or lessor accept any responsibility in respect of these particulars, which are not intended to be statements or representations of fact and any intending purchaser or lessee must satisfy himself by inspection or otherwise as to the correctness of each of the statements contained in these particulars. Any floorplans on this brochure are for illustrative purposes only and are not necessarily to scale.

TOTAL FLOOR AREA: 568 sq. ft. (52.8 sq. m.) approx.
Measurements are approximate. Not to scale. (intended for purposes only)
Drawn with AutoCAD 2023



GROUND FLOOR
568 sq. ft. (52.8 sq. m.) approx.





Church Road, Northenden M22 4NT

£87,950

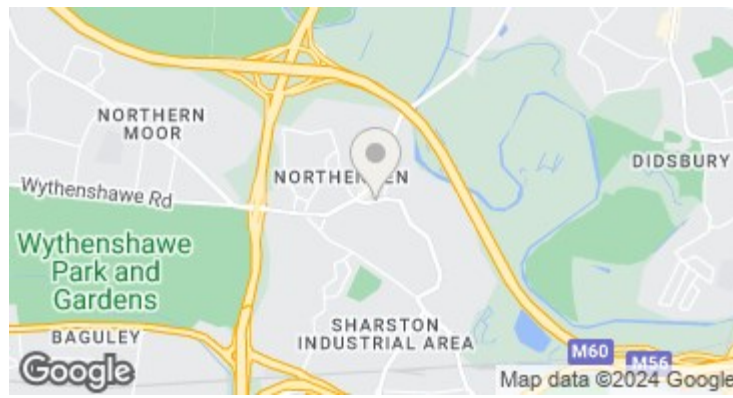


The Property

****OVER 60's ONLY**** - Ready to move into, this ground floor retirement apartment is ideal for anyone over 60, being centrally located with easy access to Northenden Village, with residents parking, attractive communal grounds, 24 hour emergency call system, and social communal areas. The living space is well presented throughout and includes a spacious living room, kitchen & modern shower room, two double bedrooms and a good sized hallway with built-in storage cupboard. In addition, there is uPVC double glazing and no onward chain.

Directions

M22 4NT



- Retirement apartment
- Over 60's
- Sizeable living room
- Residents parking
- Within walking distance of Northenden Village
- Ground floor flat
- Communal grounds
- Modern shower room
- Two bedrooms
- NO ONWARD CHAIN

Postcode - M22 4NT

EPC Rating - C

Floor Area - 568.00 sq ft

Local Authority - Manchester City Council

Council Tax - B

