



Jordan Fishwick

ALTRINCHAM
Peel Avenue



Peel Avenue, Altrincham, WA14 2UG

Price Guide £900,000



The Property

GUIDE PRICE (£900,000 - £950,000)

No Onward Chain Jordan Fishwick are proud to offer for sale this stunning period property, tucked away in a quiet setting within the heart of Hale village - shops, restaurants and the train station are all on the doorstep of this great family home. The spacious and extremely versatile accommodation is arranged over four floors, At ground floor there is an entrance hall, Lounge, DWC and open plan kitchen living area, with further access to the basement. At lower ground floor there is a versatile room ideal as a 2nd reception room or games room, an office, utility area and a shower room. There are four double bedrooms arranged across the first and second floor with three stylish bath/shower rooms. The main bedroom is fitted with a walk in wardrobe and ensuite to offer a principal suite. There is a pleasant decked terrace to the rear (accessed directly from dining kitchen) and two parking spaces to the front.

Viewing's are strongly advised to appreciate this impressive and versatile property.

Directions

WA14 2UG



- Short walk to Hale Village Centre
- Open Plan Living Area
- Retained Period Features
- Council Tax Band F
- EPC Rating E
- 5 Bathrooms and Seperate D.W.C
- Utility Room
- Offroad Parking
- 2213 sqft
- Main Bedroom with Ensuite and Walk in Wardrobe

Postcode - WA14 2UG

EPC Rating - E

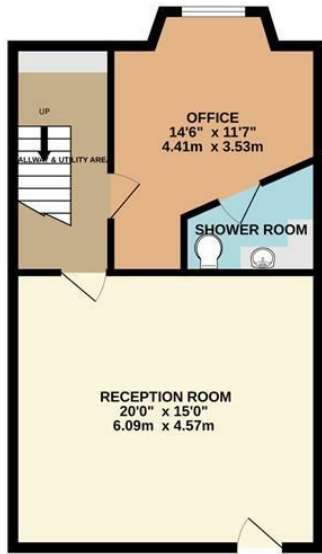
Floor Area - 2213.00 sq ft

Local Authority - Trafford

Council Tax - F



BASEMENT LEVEL
486 sq.ft. (45.1 sq.m.) approx.



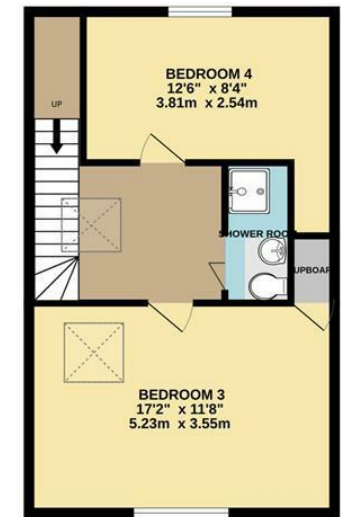
GROUND FLOOR
634 sq.ft. (58.9 sq.m.) approx.



1ST FLOOR
619 sq.ft. (57.5 sq.m.) approx.



2ND FLOOR
474 sq.ft. (44.0 sq.m.) approx.



TOTAL FLOOR AREA : 2213 sq.ft. (205.6 sq.m.) approx.

Whilst every attempt has been made to ensure the accuracy of the floorplan contained here, measurements of doors, windows, rooms and any other items are approximate and no responsibility is taken for any error, omission or mis-statement. This plan is for illustrative purposes only and should be used as such by any prospective purchaser. The services, systems and appliances shown have not been tested and no guarantee as to their operability or efficiency can be given.

Made with Metropix ©2023



These particulars are believed to be accurate but they are not guaranteed and do not form a contract. Neither Jordan Fishwick nor the vendor or lessor accept any responsibility in respect of these particulars, which are not intended to be statements or representations of fact and any intending purchaser or lessee must satisfy himself by inspection or otherwise as to the correctness of each of the statements contained in these particulars. Any floorplans on this brochure are for illustrative purposes only and are not necessarily to scale.

Offices at: Chorlton, Didsbury, Disley, Hale, Glossop, Macclesfield, Manchester Deansgate, Manchester Whitworth Street, New Mills, Sale, Wilmslow and Withington

0161 929 9797

hale@jordanfishwick.co.uk
www.jordanfishwick.co.uk