



| Chesham Place | Altrincham





£2,800 PCM



\*\*\* AVAILABLE NOW \*\*\* A magnificent first floor apartment with lift access in a prestigious gated development being just a stones throw from Hale village.

The original mansion house was converted into just nine apartments by renowned Developer Belmont Homes in 2005. The apartment retains the large rooms, 10ft ceiling heights and features one would expect from a building of this age, which are complimented by a very high quality, contemporary finish. Large living/dining room with wooden flooring and bay window, stylish fitted kitchen, extensive master bedroom with a four piece En-suite, a further generous double bedroom. Additionally you have bedroom three which accommodates a large dressing room with fitted furnishings providing sought after storage space. Finally you have a the family bathroom and separate utility room. The building sits behind secure electric gates and is surrounded by immaculate communal gardens with allocated parking. 6 MONTH LET PREFERRED - Offered on an unfurnished basis. Call now to view 0161 929 9797



- Prestigious Gated Development
- Presented to the Highest Standard

- Two/Three Bedrooms
- Lift Access



- Two Bathrooms
- Allocated Parking Space

[www.jfexclusive.co.uk](http://www.jfexclusive.co.uk)

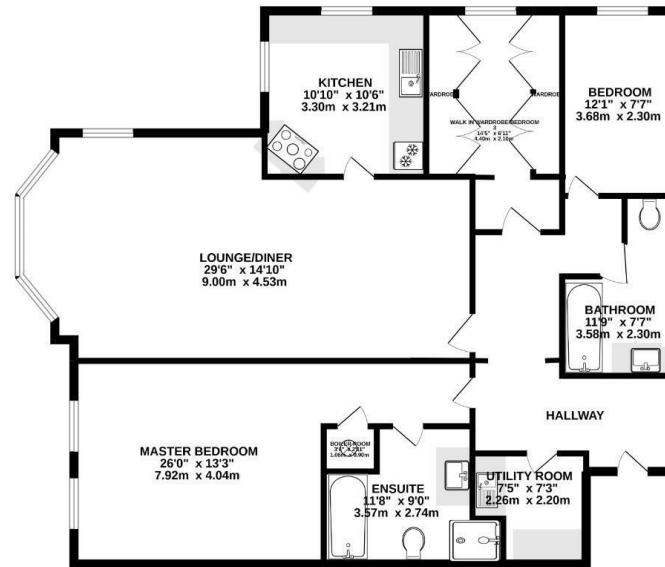
[hale@jordanfishwick.co.uk](mailto:hale@jordanfishwick.co.uk)



JORDAN FISHWICK  
EXCLUSIVE

0161 929 9797

GROUND FLOOR  
1510 sq.ft. (140.3 sq.m.) approx.



TOTAL FLOOR AREA - 1510sq ft. (140.3 sq m) approx.  
Whilst every attempt has been made to ensure the accuracy of the foregoing contained herein, measurement errors of doors, windows, rooms and any other items are approximations and no responsibility is taken for any errors, omissions or misstatements. This plan is for illustrative purposes only and should be used as such by any prospective purchaser. The services, appliances and fixtures shown have not been tested and no guarantee as to their operability or efficiency can be given.  
Hale - 0161 929 9797

Jordan Fishwick  
172 Ashley Road  
Altrincham  
Cheshire  
WA15 9SF

[hale@jordanfishwick.co.uk](mailto:hale@jordanfishwick.co.uk)

IMPORTANT: we would like to inform prospective purchasers that these sales particulars have been prepared as a general guide only. A detailed survey has not been carried out, nor the services, appliances and fittings tested. Room sizes should not be relied upon for furnishing purposes and are approximate. If floor plans are included, they are for guidance only and illustration purposes only and may not be to scale. If there are any important matters likely to affect your decision to buy, please contact us before viewing the property.