



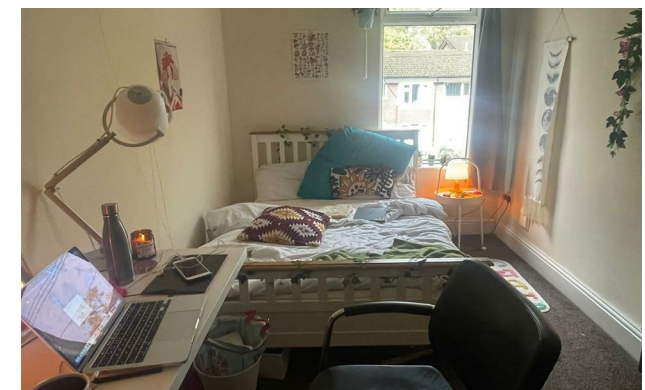
Jordan fishwick

20 Derby Road, Fallowfield, M14 6UW
£3,276 Per Calendar Month



Derby Road Manchester M14 6UW

£3,276 Per Calendar Month



The Property

View our Virtual Tour Here - <https://youtu.be/df9S90aC62M>

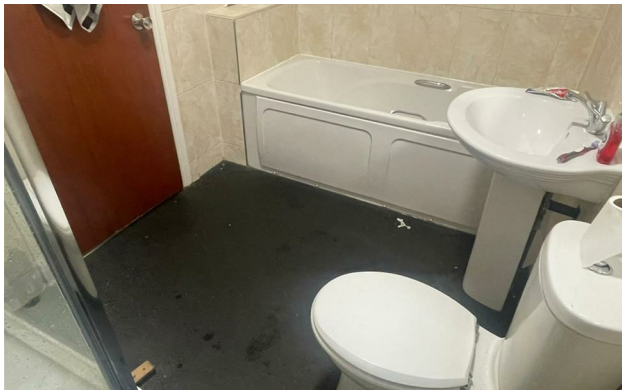
***** AVAILABLE 1st JULY 2024 *** £108.00 PPPW *** NO DEPOSIT OPTION AVAILABLE *** BILLS PACKAGE AVAILABLE ***** A stunning 7 double bedroom student home available for the academic year 2024/25, ideally located a stones throw from Wilmslow Road bus route and both Withington and Fallowfield centres. The property is finished to an extremely high standard throughout and compromises; large lounge with ample seating, a fitted modern kitchen including dishwasher, washing machine and space for a dining table, seven double bedrooms and two good sized bathrooms. Garden. To view apply Withington 0161 438 2411.

EPC Rating - D

- Available July 2024
- £108.00 PPPW
- Seven Double Bedrooms
- Two Bathrooms
- No Deposit Option Available
- Bills Package Available
- Fully Furnished
- Garden
- Ideally located
- Council Tax Band C



Energy Efficiency Rating		
	Current	Potential
Very energy efficient - lower running costs		
(92 plus) A		
(81-91) B		83
(69-80) C		
(55-68) D	66	
(39-54) E		
(21-38) F		
(1-20) G		
Not energy efficient - higher running costs		
England & Wales	EU Directive 2002/91/EC	





These particulars are believed to be accurate but they are not guaranteed and do not form a contract. Neither Jordan Fishwick nor the vendor or lessor accept any responsibility in respect of these particulars, which are not intended to be statements or representations of fact and any intending purchaser or lessee must satisfy himself by inspection or otherwise as to the correctness of each of the statements contained in these particulars. Any floorplans on this brochure are for illustrative purposes only and are not necessarily to scale.

Offices at: Offices at Chorlton, Didsbury, Disley, Hale, Glossop, Macclesfield, Manchester Deansgate, Manchester Whitworth Street, New Mills, Sale, Wilmslow and Withington