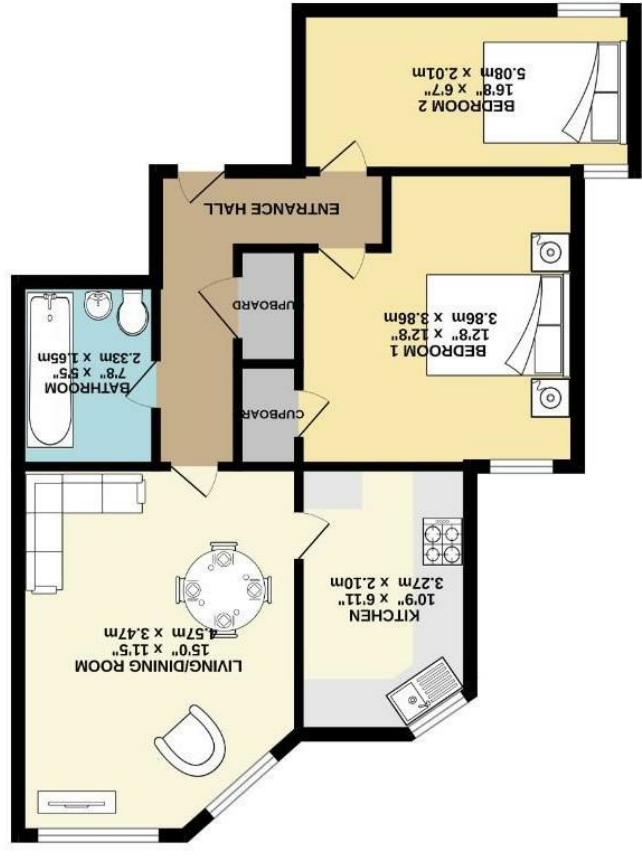


TOTAL FLOOR AREA: 580 sq.ft. (53.9 sq.m.) approx.  
Measurements are approximate. Not to scale. Illustrative purposes only.  
Made with AutoCAD 2023



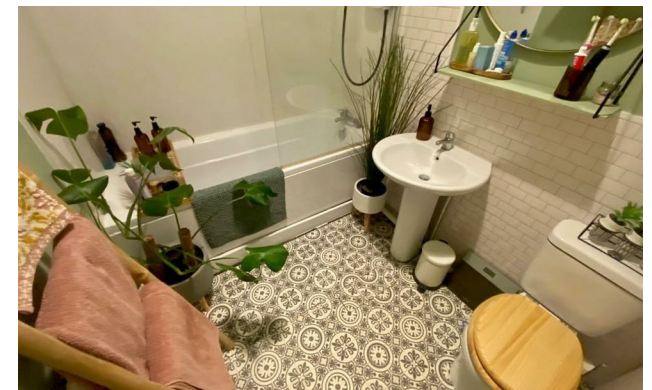
GROUND FLOOR  
580 sq.ft. (53.9 sq.m.) approx.





Palatine Road, Withington M20 3JA

£215,000



### The Property

Located between Didsbury and Withington Villages and opposite The Christie Hospital, positioned just a short walk from Burton Road Metrolink station. Alpine Court is a spacious two bedroom apartment set within period conversion and features include double glazed windows, gas central heating with newly installed boiler, private residents off road parking, fully re-fitted kitchen, large master bedroom plus additional large second bedroom, white bathroom suite and ample storage. The apartment would be ideal for a number of buyers including the buy to let landlord or first time buyer wishing to have access to the fabulous centre of West Didsbury and the convenience of brilliant transport links to Manchester City Centre and beyond. Communal gardens completes the impressive specification.

### Directions

M20 3JA



- A two bedroom ground floor apartment
- Set within a period conversion
- Lounge/dining room and separate fully re-fitted kitchen
- Walking distance to Burton Road
- Excellent transport links
- Gas central heating with newly fitted boiler
- Communal gardens and private residents parking
- Communal storage in cellars

Postcode - M20 3JA

EPC Rating - D

Floor Area - 580.00 sq ft

Local Authority - Manchester City Council

Council Tax - C

