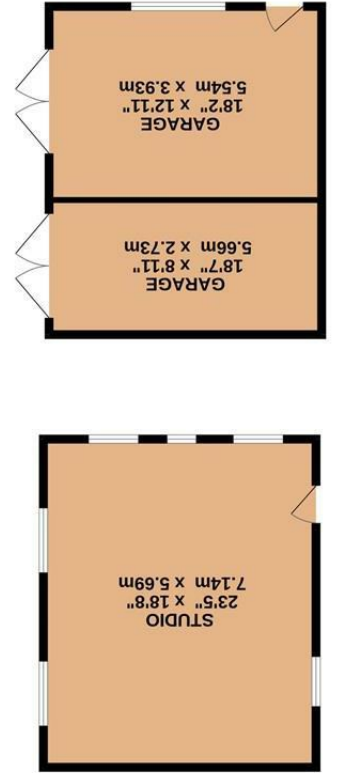
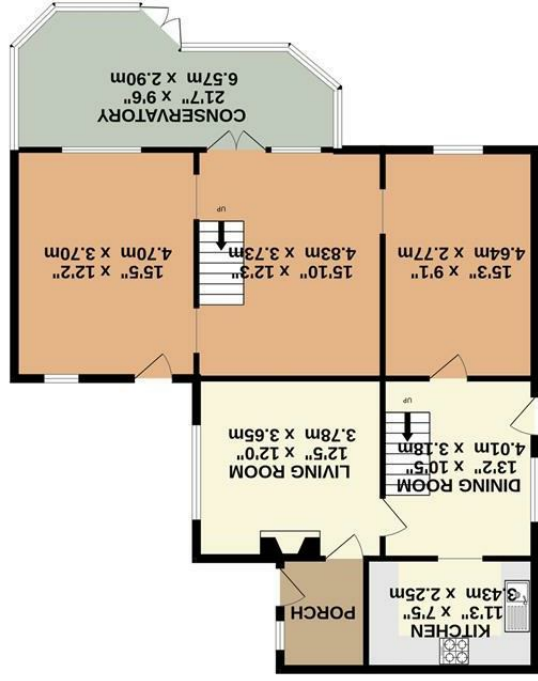


These particulars are believed to be accurate but they are not guaranteed and do not form a contract. Neither Jordan Fishwick nor the vendor or lessor accept any responsibility in respect of these particulars, which are not intended to be statements or representations of fact and any intending purchaser or lessee must satisfy himself by inspection or otherwise as to the correctness of each of the statements contained in these particulars. Any floorplans on this brochure are for illustrative purposes only and are not necessarily to scale.

Whilst every attempt has been made to ensure the accuracy of the floorplan contained here, measurements of doors, windows, rooms and any other items are approximate and no responsibility is taken for any error, omission or mis-statement. This plan is for illustrative purposes only and should be used as such by any prospective purchaser. The services, systems and appliances shown have not been tested and no guarantee as to their operability or efficiency can be given.
Made with Metropix ©2023



GROUND FLOOR



1ST FLOOR



3-5 London Place, Watford
Bridge, New Mills, SK22 4ER

£460,000



The Property

A wonderful opportunity to purchase a development project with tremendous potential! On the outskirts of New Mills and close to open countryside and The River Sett, a unique property standing in a very large plot. Originally two separate properties and could be wither one large property or indeed two individual units. Private gardens with separate vehicular access, double width driveway, garaging for two cars and 23ft studio above. The main residence is a three bedroom home and work has been started on the additional property. Viewing highly recommended.



- Unique Opportunity
- Potential Development Project
- Two Dwellings Plus Garage/Studio
- Large Gardens
- Ample Off Road Parking Space
- Energy Rating: D Council Tax Band: C
- Potential Building PLOT (subject to Planning Permission)
- Close To Open Countryside

Postcode - SK22 4ER
EPC Rating - D
Local Authority - High Peak
Council Tax - C

