



jordan fishwick

FALLOWFIELD
St. Ives Road

St. Ives Road, Fallowfield, M14 5NH

£220,000

The Property

INVESTMENT OPPORTUNITY A period terraced split into two one bedroom apartments, with a combined income of £13,020 to be sold with the current tenants in situ, both tenants are on assured shorthold tenancy agreements. Both apartments benefit from double glazing and gas central heating. Apartment 1 comprises: Living area through to bedroom area, separate kitchen and bathroom, Apartment 2, living area, bedroom, kitchen and bathroom, To the rear of the property there is a shared enclosed courtyard garden.

Directions

M14 5NH



- Investment opportunity
- Split into 2 self contained apartments
- Combined income of £13.020
- Located just off Wilmslow Road
- Double glazing and gas heating to both flats
- Opposite Platt Fields Park
- Close to Universities & Hospitals

Postcode - M14 5NH

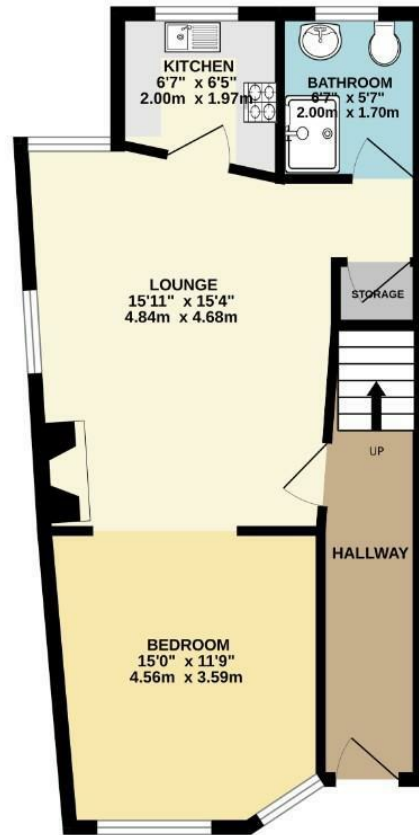
EPC Rating - D

Floor Area - 903.00 sq ft

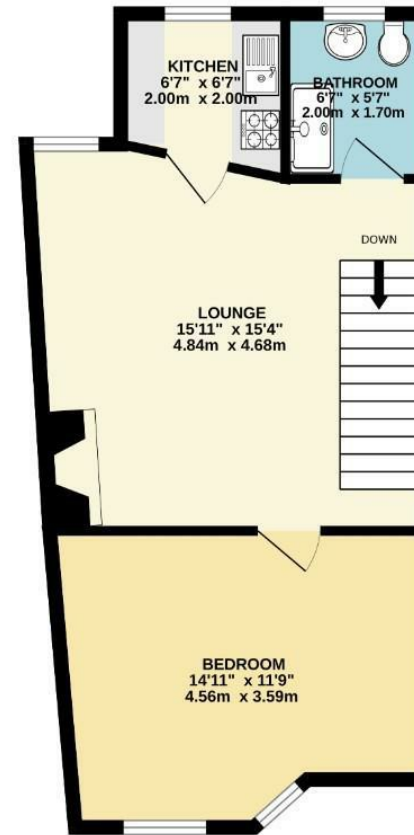
Local Authority - Manchester City council

Council Tax - A

GROUND FLOOR
452 sq.ft. (42.0 sq.m.) approx.



FIRST FLOOR
450 sq.ft. (41.8 sq.m.) approx.



TOTAL FLOOR AREA : 903 sq.ft. (83.9 sq.m.) approx.
Measurements are approximate. Not to scale. Illustrative purposes only
Made with Metropix ©2023



These particulars are believed to be accurate but they are not guaranteed and do not form a contract. Neither Jordan Fishwick nor the vendor or lessor accept any responsibility in respect of these particulars, which are not intended to be statements or representations of fact and any intending purchaser or lessee must satisfy himself by inspection or otherwise as to the correctness of each of the statements contained in these particulars. Any floorplans on this brochure are for illustrative purposes only and are not necessarily to scale.

Offices also at: Wilmslow, Macclesfield, Hale, Sale, Chorlton, Glossop, Manchester & Salford

757-759 Wilmslow Road, Didsbury Village, Manchester

0161 445 4480

didsbury@jordanfishwick.co.uk
www.jordanfishwick.co.uk